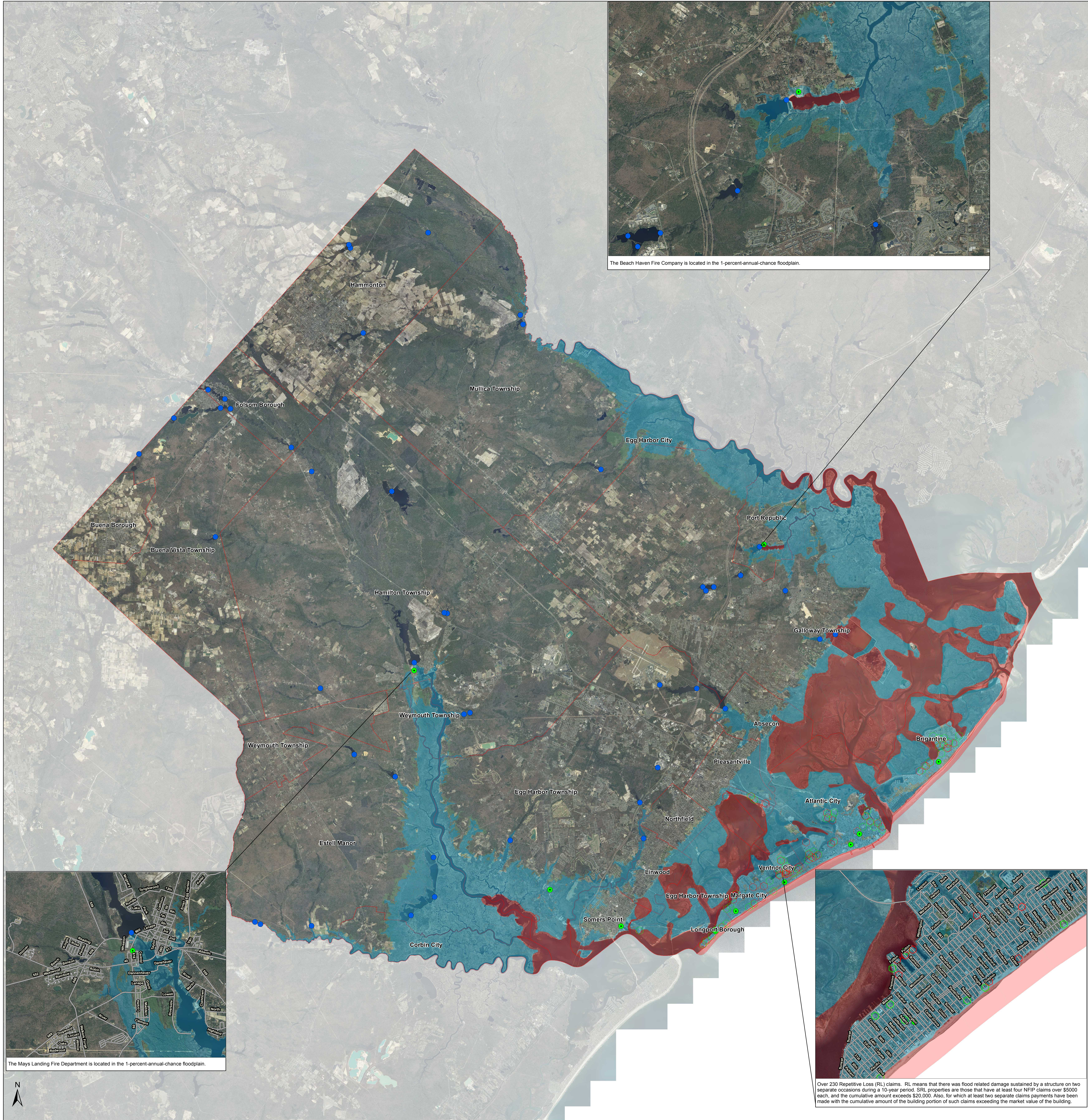


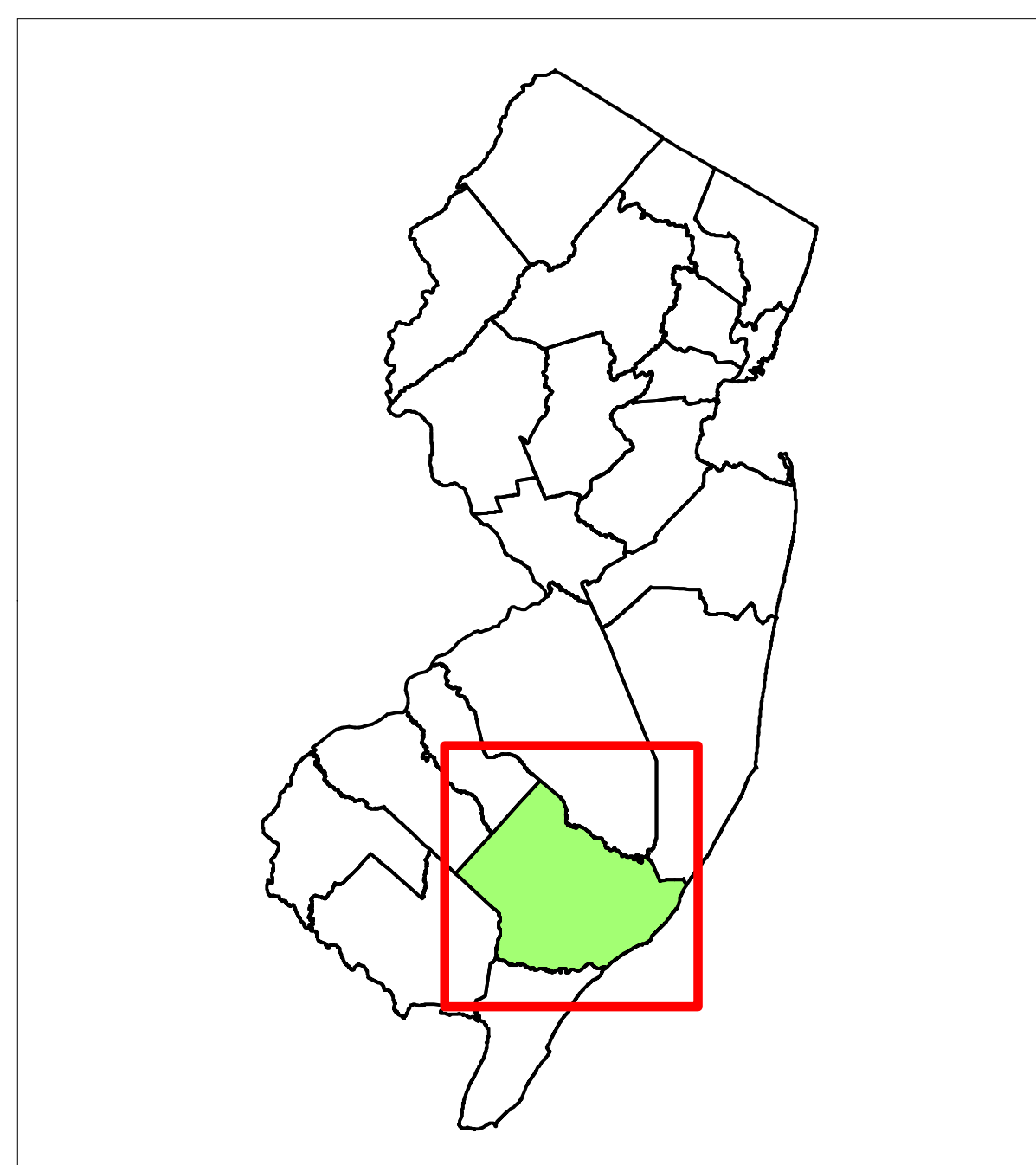
# Areas of Mitigation Interest - DRAFT

## Atlantic County, New Jersey



### Legend

- At Risk Essential Facilities
- Dam
- Past Claims Hot Spot (SRL)
- Past Claims Hot Spot (RL Cluster)
- AE
- Shaded X
- VE
- Municipality



### NATIONAL FLOOD INSURANCE PROGRAM

### AOMI MAP

VERSION NUMBER

1.1.1.1

RELEASE DATE

11/13/2013

Over 230 Repetitive Loss (RL) claims. RL means that there was flood related damage sustained by a structure on two separate occasions during a 10-year period. SRL properties are those that have at least four NFIP claims over \$5000 each, and the cumulative amount exceeds \$20,000. Also, for which at least two separate claims payments have been made with the cumulative amount of the building portion of such claims exceeding the market value of the building.