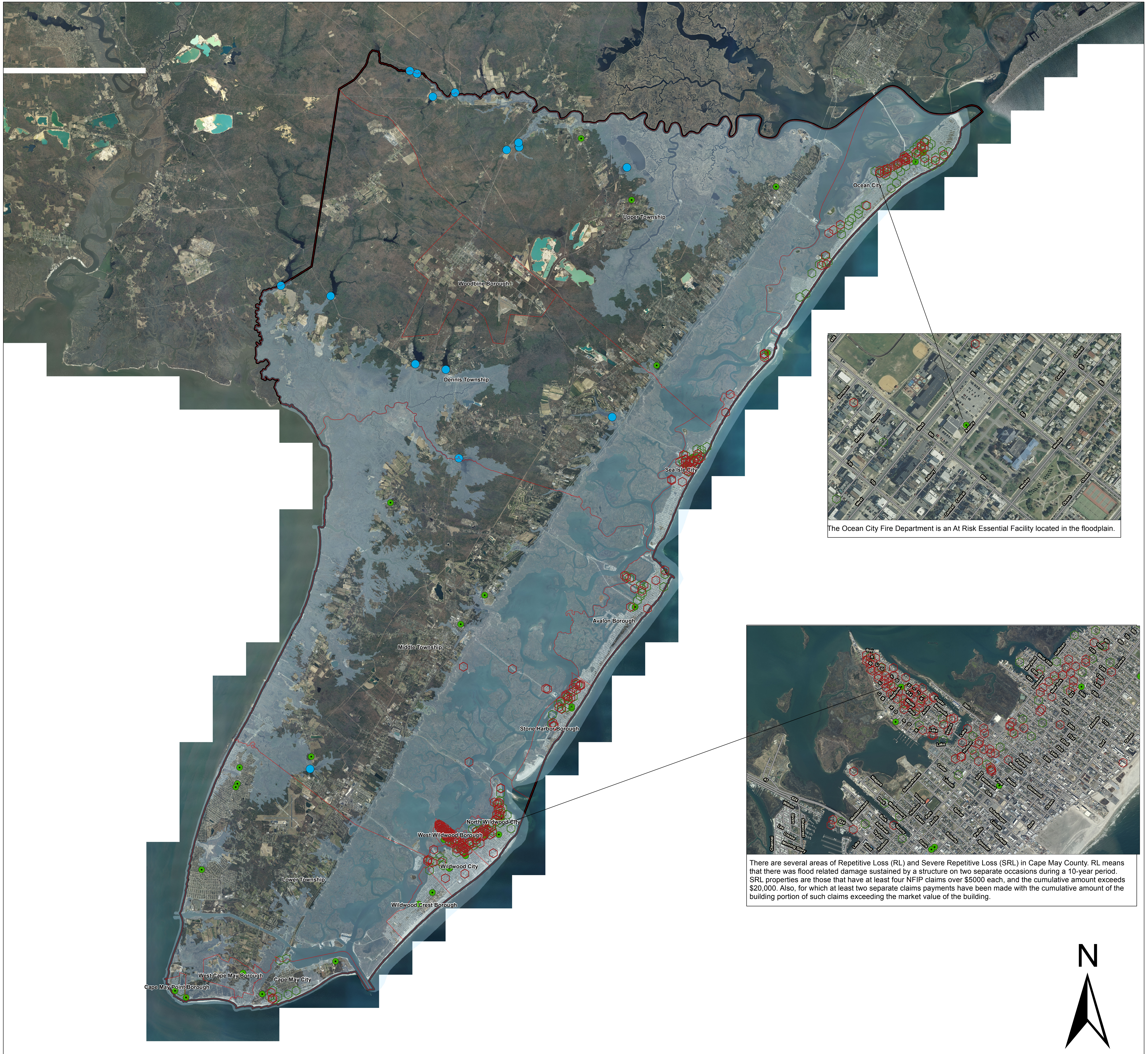


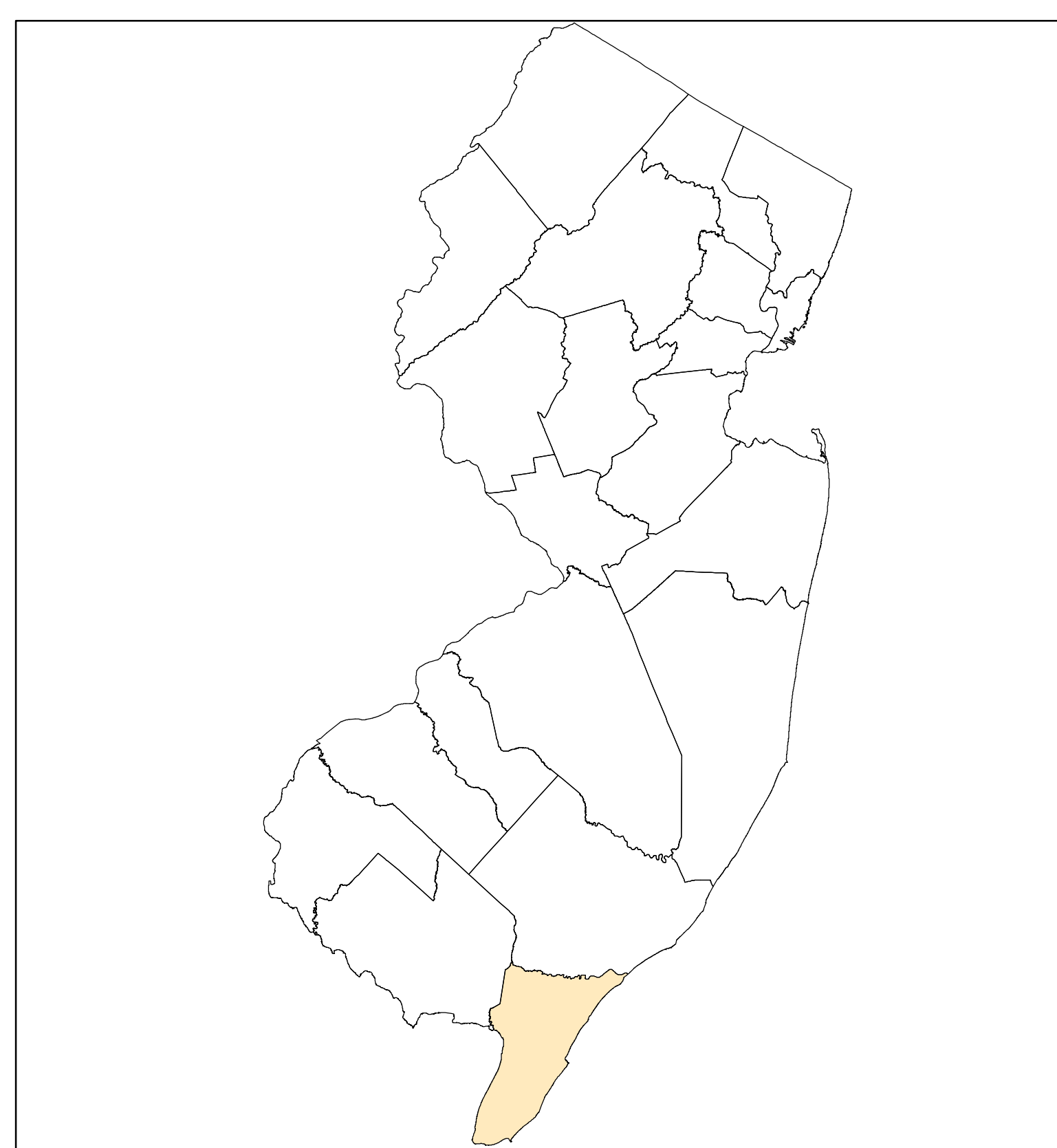
Areas of Mitigation Interest - DRAFT

Cape May County, New Jersey



The Ocean City Fire Department is an At Risk Essential Facility located in the floodplain.

There are several areas of Repetitive Loss (RL) and Severe Repetitive Loss (SRL) in Cape May County. RL means that there was flood related damage sustained by a structure on two separate occasions during a 10-year period. SRL properties are those that have at least four NFIP claims over \$5000 each, and the cumulative amount exceeds \$20,000. Also, for which at least two separate claims payments have been made with the cumulative amount of the building portion of such claims exceeding the market value of the building.



- Legend**
- At Risk Essential Facilities
 - Dams
 - Past Claims Hot Spot (RL Cluster)
 - Past Claims Hot Spot (SRL)
 - Coastal - Preliminary Work Map
 - Municipalities

NATIONAL FLOOD
INSURANCE PROGRAM

AOMI MAP

VERSION NUMBER
1.1.1.1
RELEASE DATE
11/13/2013