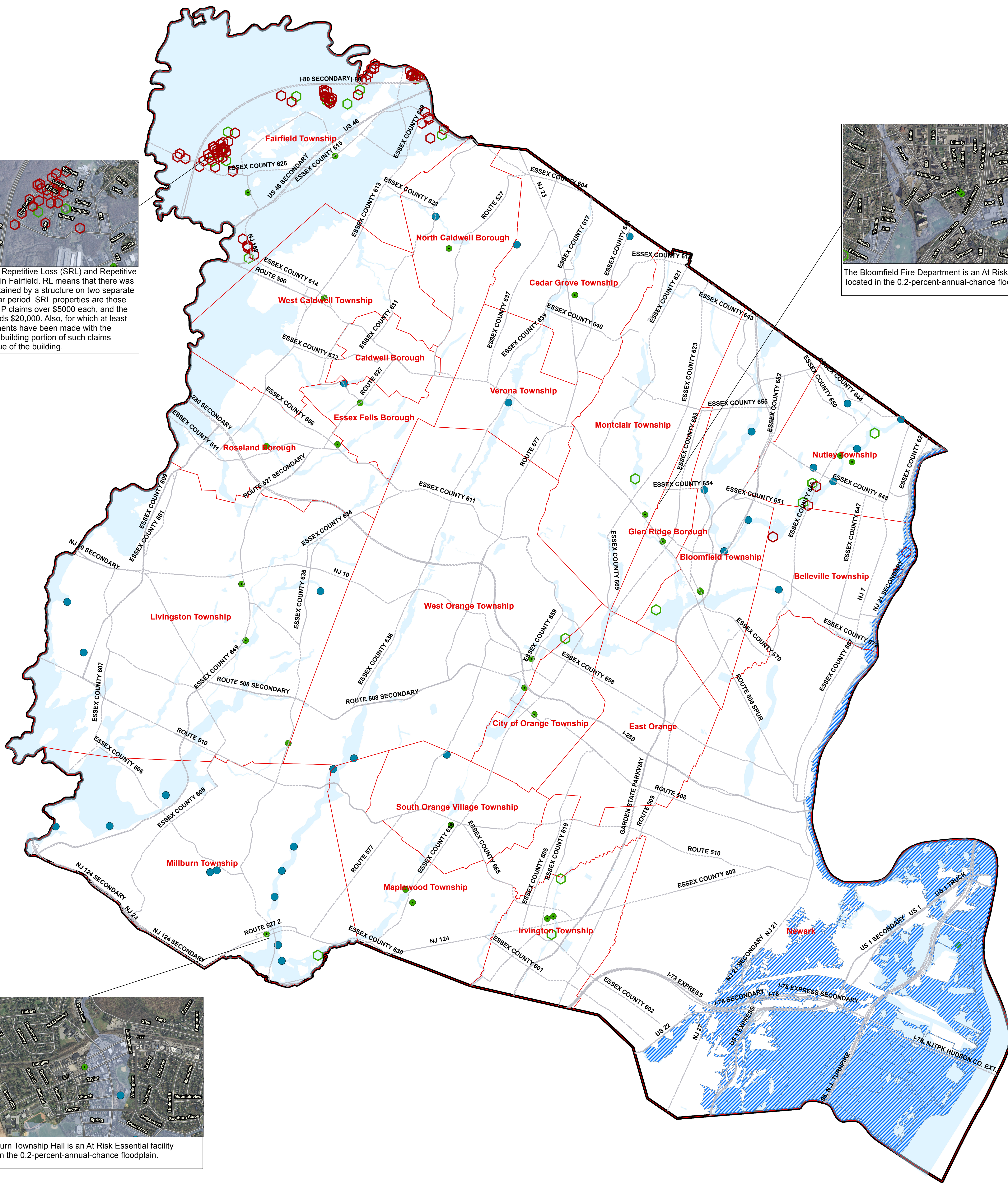


Areas of Mitigation Interest - DRAFT

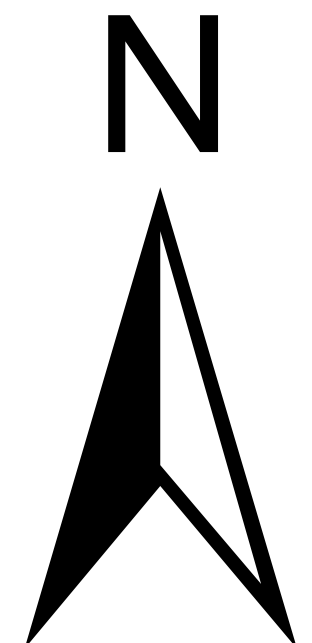
Essex County, New Jersey



There are several Severe Repetitive Loss (SRL) and Repetitive Loss (RL) homes located in Fairfield. RL means that there was flood related damage sustained by a structure on two separate occasions during a 10-year period. SRL properties are those that have at least four NFIP claims over \$5000 each, and the cumulative amount exceeds \$20,000. Also, for which at least two separate claims payments have been made with the cumulative amount of the building portion of such claims exceeding the market value of the building.

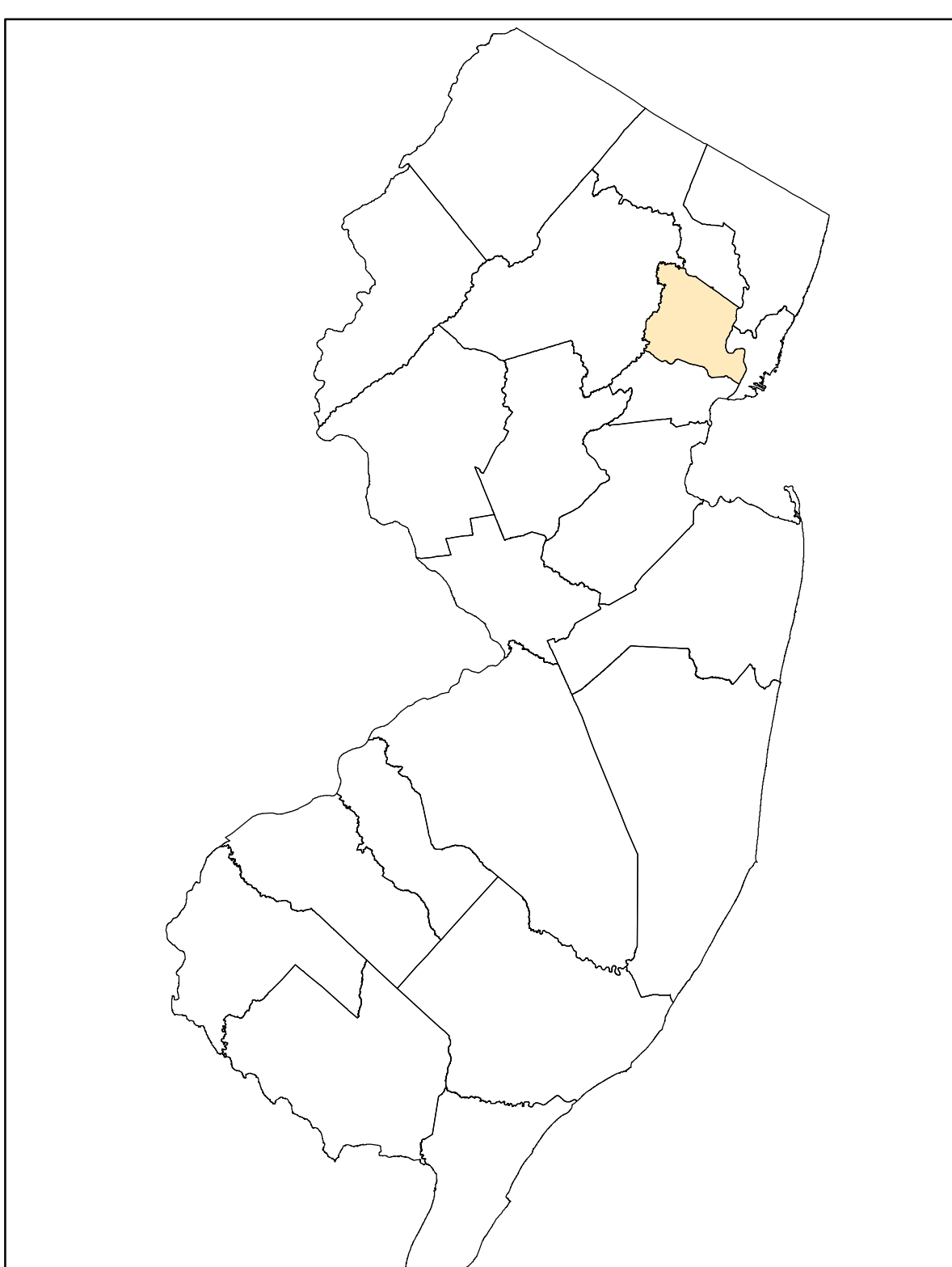
The Bloomfield Fire Department is an At Risk Essential facility located in the 0.2-percent-annual-chance floodplain.

The Millburn Township Hall is an At Risk Essential facility located in the 0.2-percent-annual-chance floodplain.



Legend

- At Risk Essential Facilities
- Dams
- Past Claims Hot Spot (SRL)
- Past Claims Hot Spot (RL Clusters)
- Essex Municipalities
- Riverine - Effective dFIRM
- Coastal - Preliminary Work Map
- Roads



NATIONAL FLOOD INSURANCE PROGRAM

AOMI MAP

VERSION NUMBER
1.1.1.1
RELEASE DATE
10/15/2013