

Areas of Mitigation Interest - DRAFT

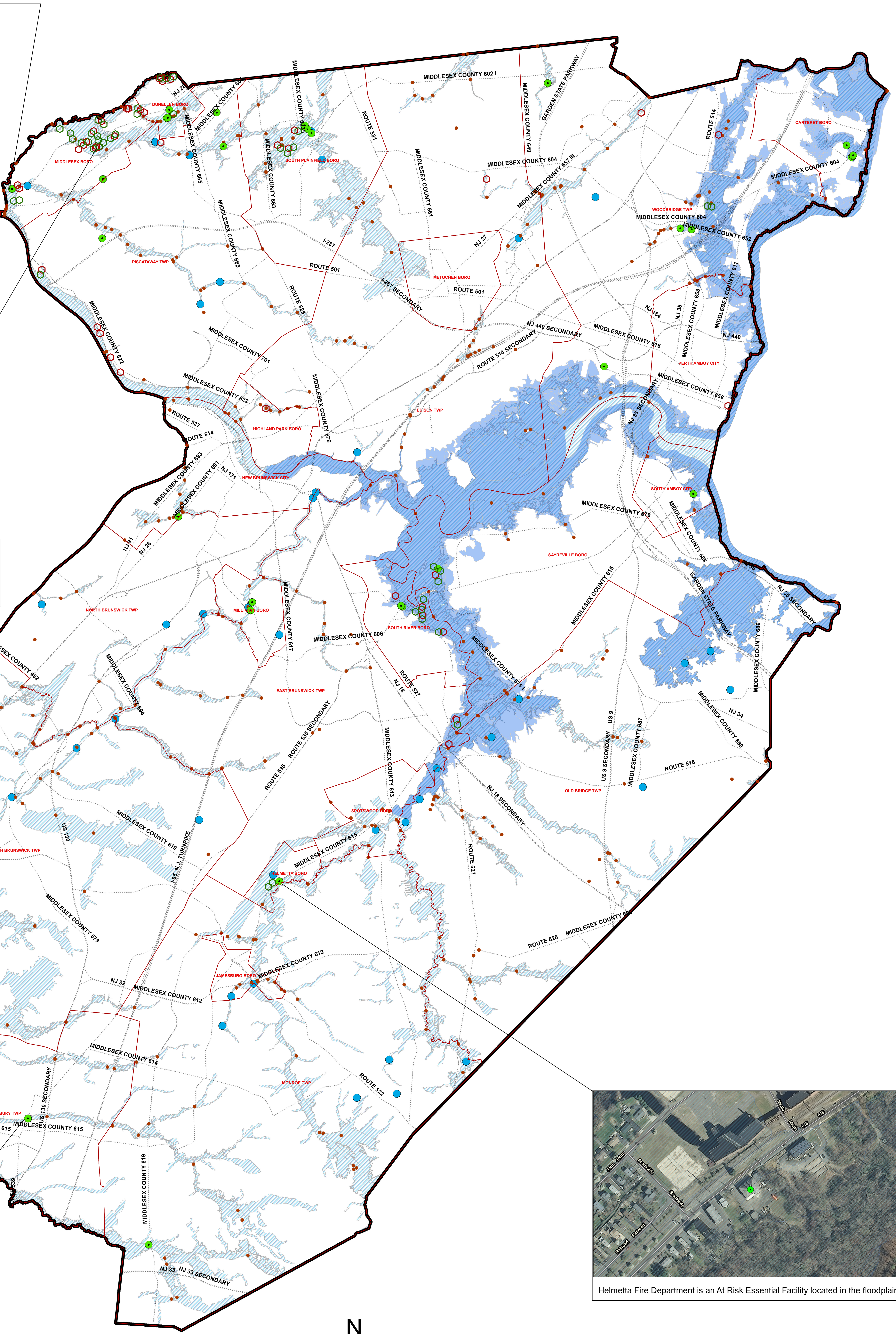
Middlesex County, New Jersey



Beechwood Heights Fire Company is an At Risk Essential Facility located in the floodplain.



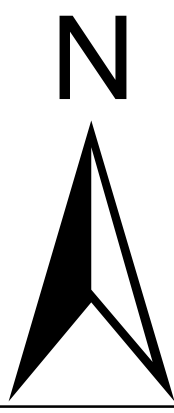
More than 45 Repetitive Loss (RL) and Severe Repetitive Loss (SRL) claims within 500 ft radius. RL means that there was flood related damage sustained by a structure on two separate occasions during a 10-year period. SRL properties are those that have at least four NFIP claims over \$5000 each, and the cumulative amount exceeds \$20,000. Also, for which at least two separate claims payments have been made with the cumulative amount of the building portion of such claims exceeding the market value of the building.



Helmetta Fire Department is an At Risk Essential Facility located in the floodplain.

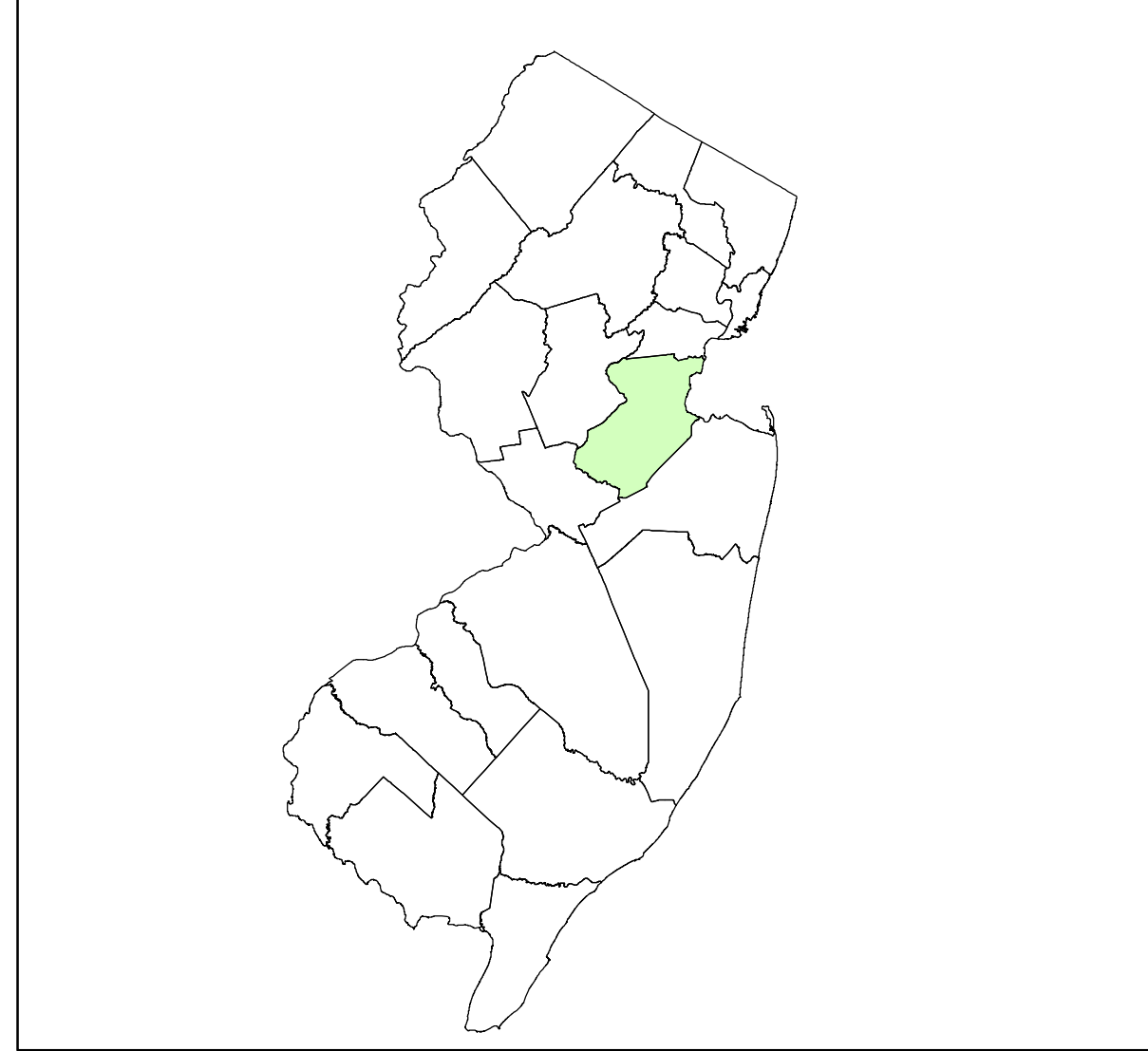


Bay Head Fire Company is an At Risk Essential Facility located in the floodplain.



0 11,600 Feet

- Legend**
- Municipalities
 - Drainage Facility (Insufficient or Marginal - 1972)
 - At Risk Essential Facilities
 - Dams
 - Past Claims Hot Spot (RL Cluster)
 - Past Claims Hot Spot (SRL)
 - Roads
 - Coastal - Preliminary Work Map
 - Riverine - Effective dFIRM



NATIONAL FLOOD INSURANCE PROGRAM
AOMI MAP

VERSION NUMBER
1.1.1.1
RELEASE DATE
8/21/2013