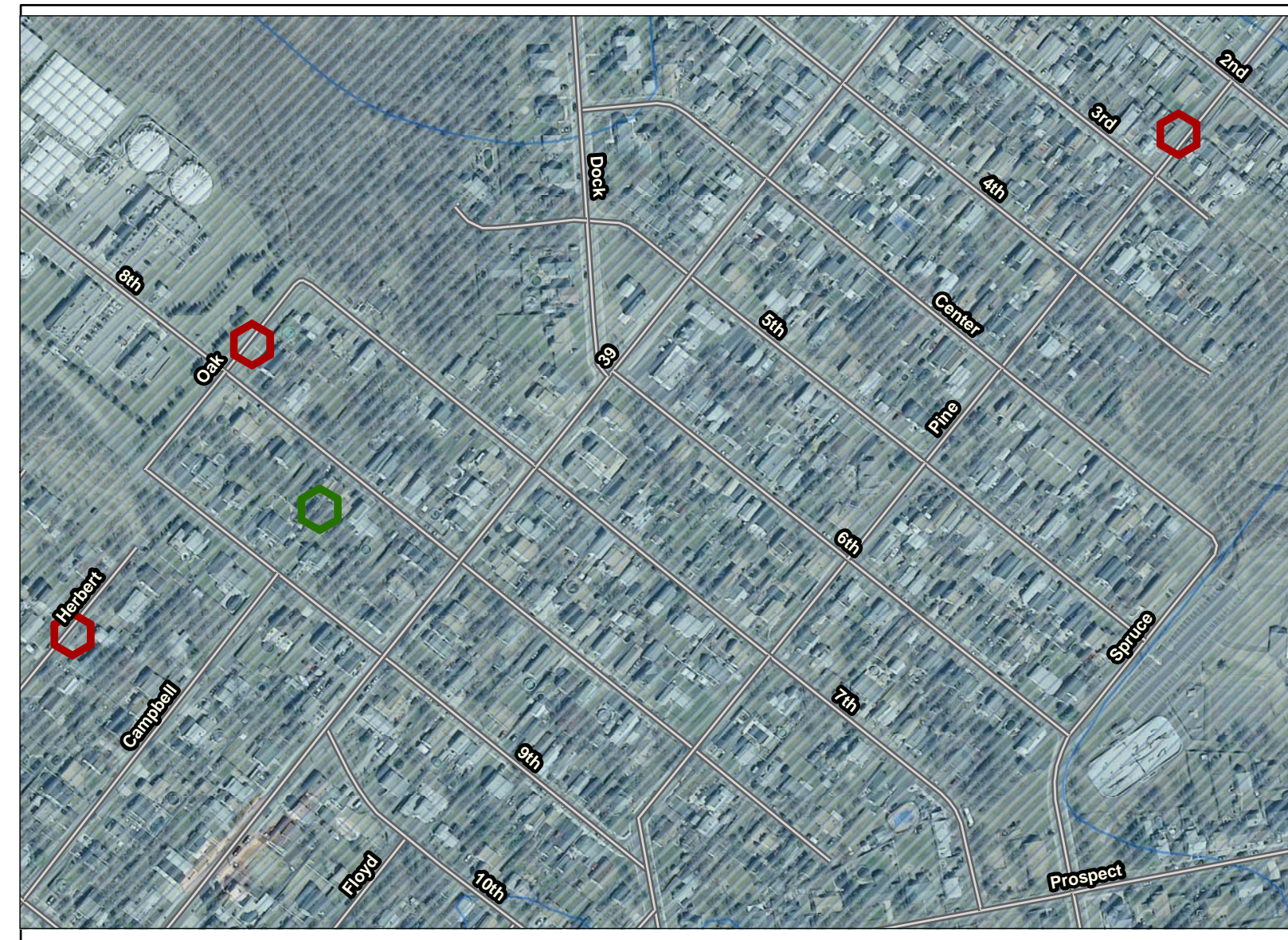
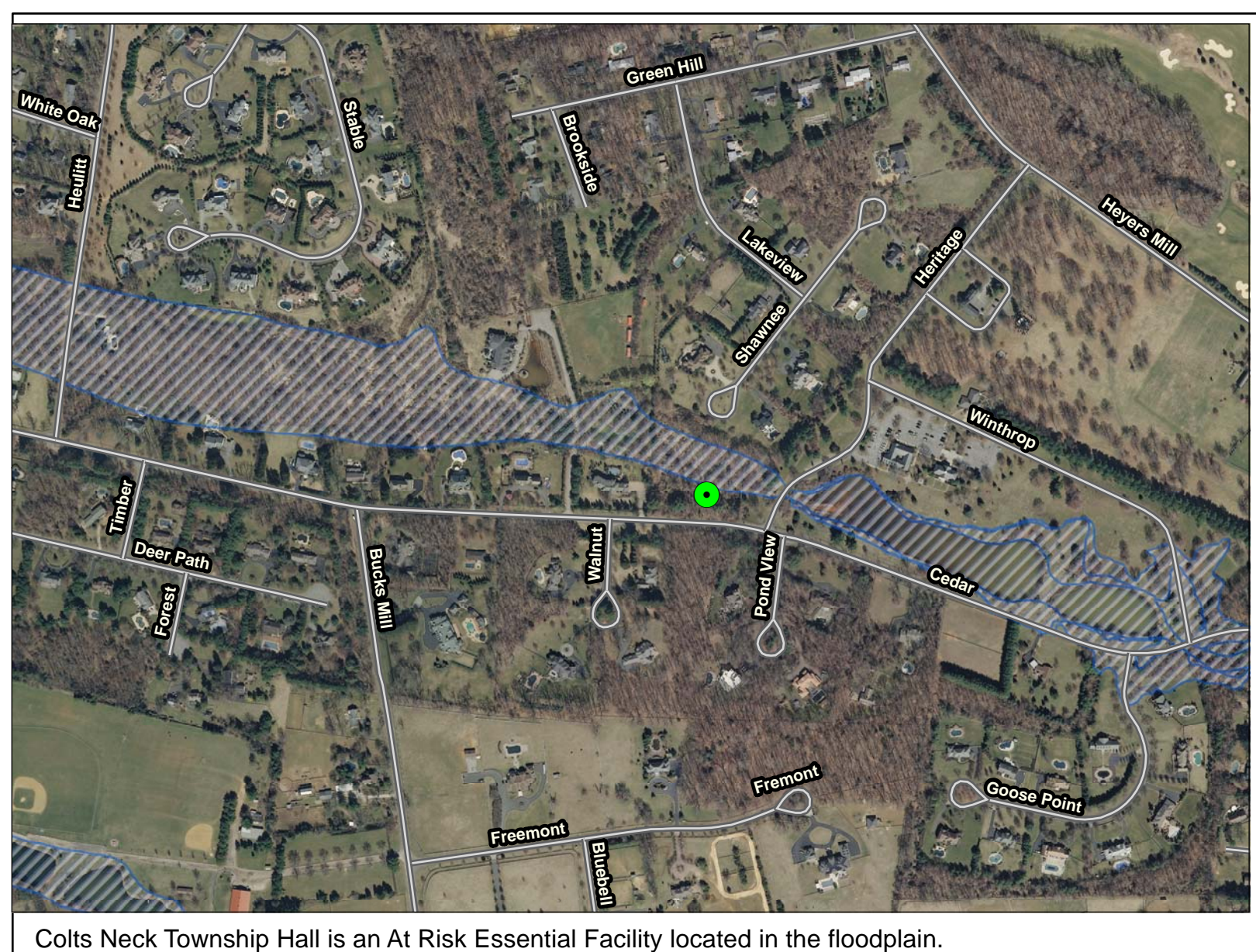


# Areas of Mitigation Interest - DRAFT

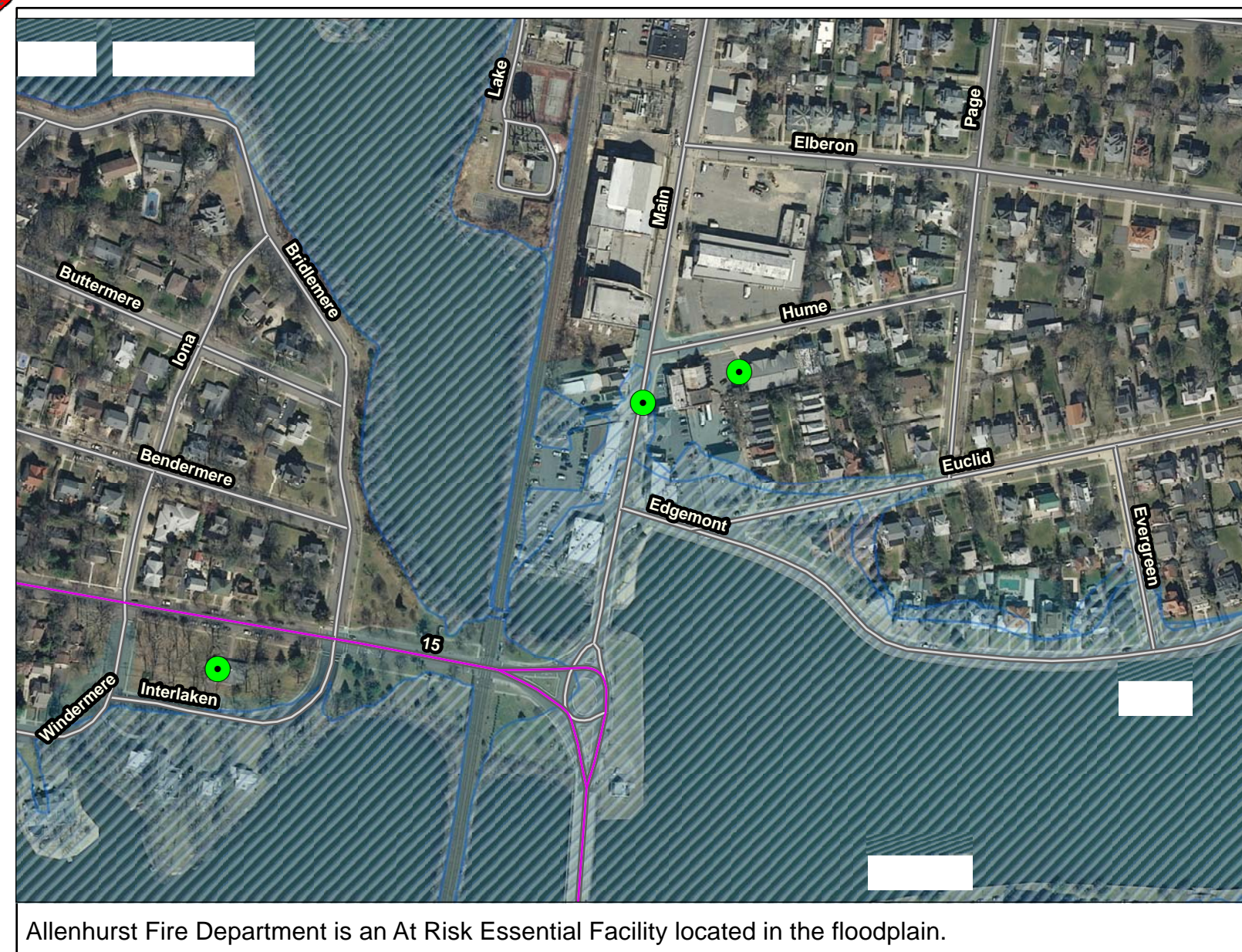
## Monmouth County, New Jersey



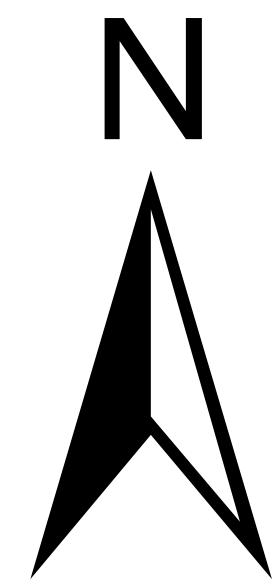
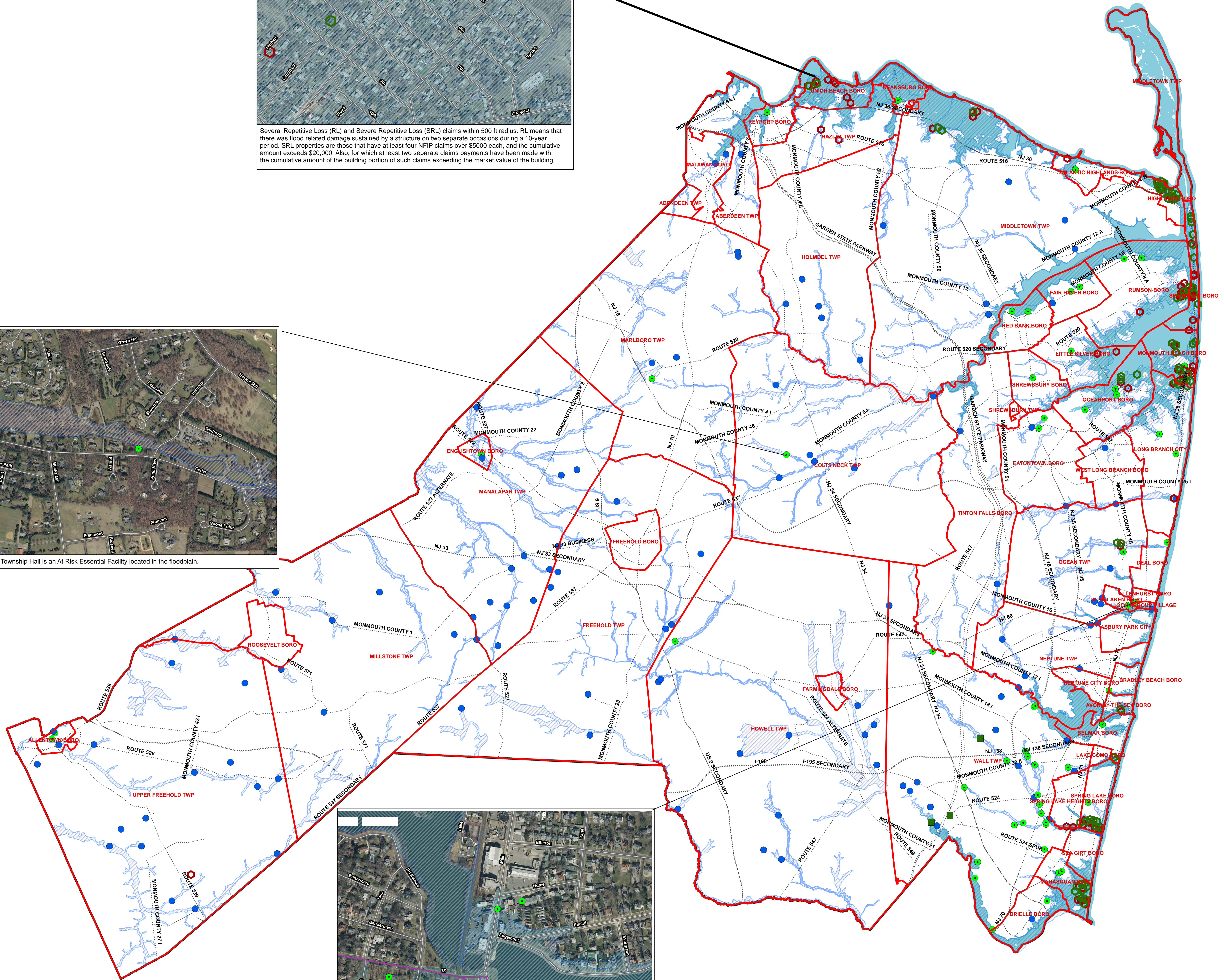
Several Repetitive Loss (RL) and Severe Repetitive Loss (SRL) claims within 500 ft radius. RL means that there was flood related damage sustained by a structure on two separate occasions during a 10-year period. SRL properties are those that have at least four NFIP claims over \$5000 each, and the cumulative amount exceeds \$20,000. Also, for which at least two separate claims payments have been made with the cumulative amount of the building portion of such claims exceeding the market value of the building.



Colts Neck Township Hall is an At Risk Essential Facility located in the floodplain.



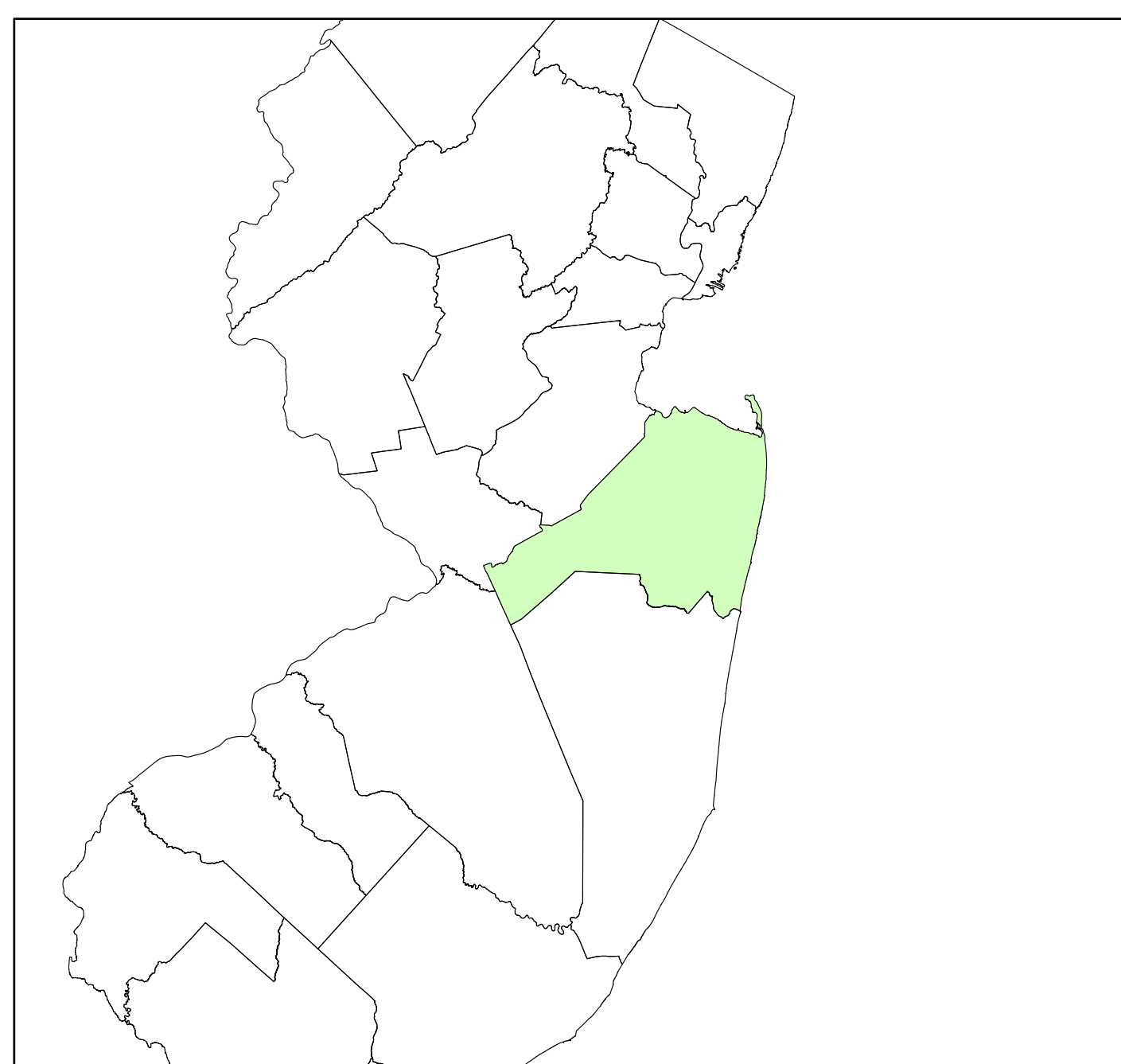
Allenhurst Fire Department is an At Risk Essential Facility located in the floodplain.



0 18,750 37,500 Feet

### Legend

- ..... Roads
  - ▭ Municipalities selection
  - ▲ Areas of Significant Erosion
  - At Risk Essential Facilities
  - Dam
  - Past Claims Hot Spot (RL Cluster)
  - Past Claims Hot Spot (SRL)
  - Streamflow Constrictions
- FLD\_ZONE**
- Coastal - Preliminary Work Map
  - ▨ Riverine - Effective dFIRM Riverine Floodplain



**NATIONAL FLOOD INSURANCE PROGRAM**

**AOMI MAP**

VERSION NUMBER 1.1.1.1  
RELEASE DATE 8/21/2013