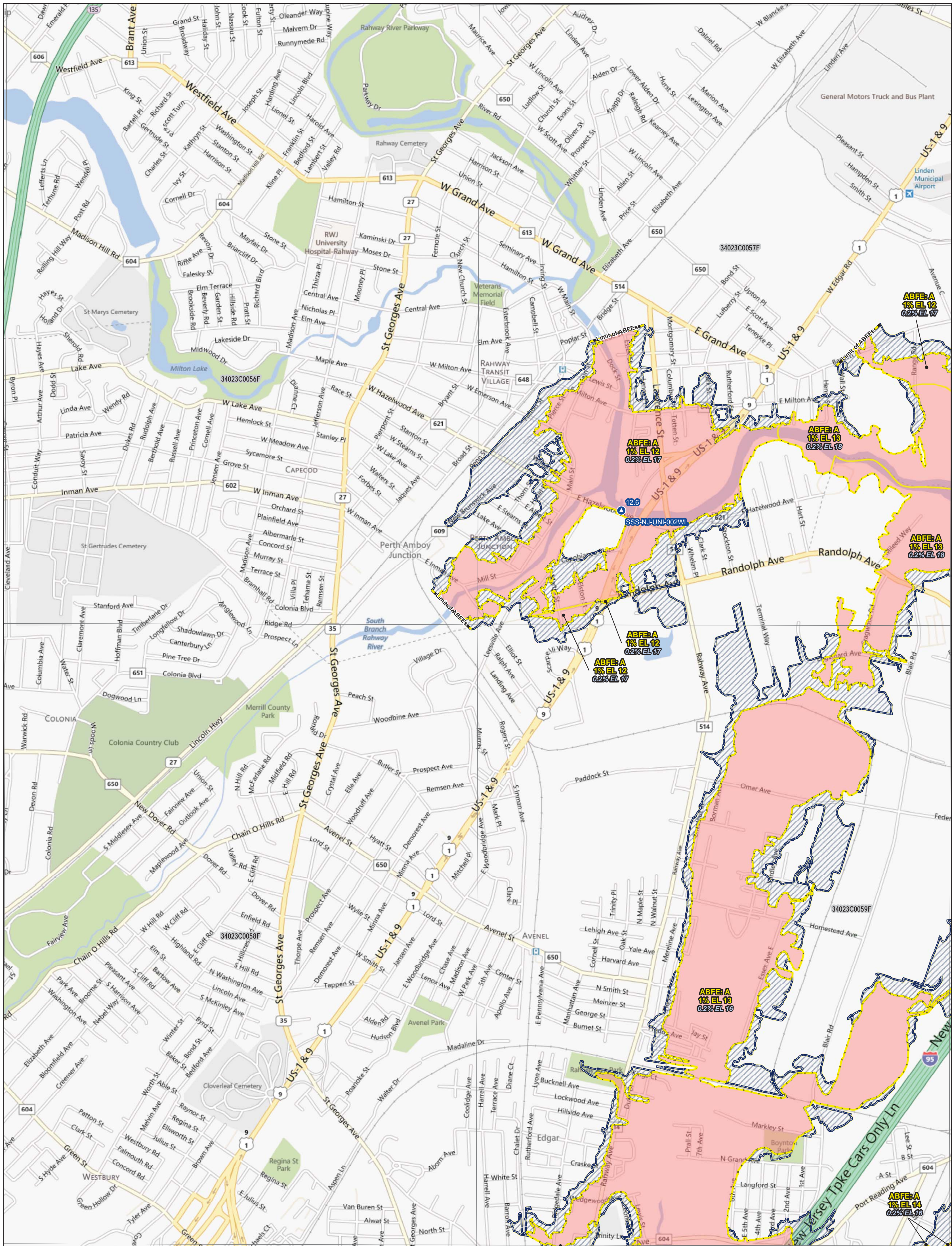


County Name has been updated.

JOINS PANEL ROSELLE SE



JOINS PANEL PERTH AMBOY SE

bing © 2012 Microsoft Corporation

ADVISORY BASE FLOOD ELEVATIONS

This map shows Advisory Base Flood Elevations (ABFEs) developed by FEMA. Use the QR code to the right, or navigate to <http://www.region2coastal.com/> for more information on how they were determined.

These ABFEs can serve as a guide to understanding current coastal flood hazard risk and the elevations that communities should build to in order to protect themselves from future flood events. As part of the long term recovery effort, the ABFEs are a tool for Federal, State, and local officials, building officials, builders and architects, insurance professionals, and property owners to make informed decisions during rebuilding and to mitigate losses from future flood events, safeguard lives, and protect the private and public investment in rebuilding.

¹ Measured in feet relative to the North American Vertical Datum of 1988 (NAVD88). To convert from NAVD88 to the National Geodetic Vertical Datum of 1929, add the following county-wide value(s): Middlesex (1.1 ft), and Union (1.0 ft) [\[The datum conversion note was updated with data for the counties on this panel.\]](#)

² Each whole-foot 1% annual chance Advisory Base Flood Elevation shown applies to all properties located in the mapped zone, with zone boundaries outlined in yellow.

³ Each whole-foot 0.2% annual chance Advisory Base Flood Elevation shown applies to all properties located in the mapped zone, with zone boundaries outlined in yellow.

⁴ Depicts the extent of the "Coastal A Zone" or area of moderate wave action where wave heights are between 1.5 and 3 feet. The FEMA Coastal Construction Manual, American Society of Civil Engineers, and the 2012 International Residential Building Code recommend Zone VE construction practices in this area.

⁵ Depicts the extent of the Coastal Barrier Resources Act (CBRA). CBRA System Units are shown on this map to advise users where Federal funding is unavailable for repairing or rebuilding substantially damaged structures. For official delineations of the CBRA, please refer to the U.S. Fish and Wildlife Service at <http://www.fws.gov/cbra/>

Data Sources:

⁶ Sandy Surge Elevations: U.S. Geological Survey Rapid Deployment Gauges and High Water Marks (Provisional data retrieved on 11/27/2012). Current data can be found at: <http://water.usgs.gov/floods/events/2012/sandy/>; Base Map: Bing Maps Road; Stillwater Elevations: Preliminary Coastal FEMA Flood Insurance Study Update for New York City and New Jersey, 2012; Storm Track: NOAA National Weather Service

MAPS FOR ADVISORY PURPOSES ONLY - NOT FOR INSURANCE RATING PURPOSES

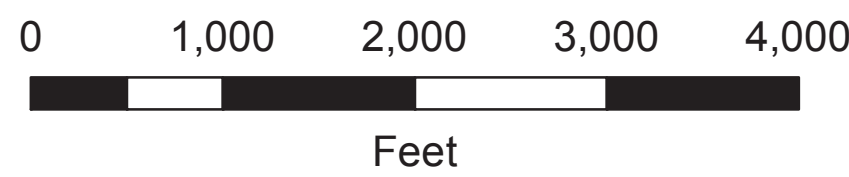
For insurance rating purposes refer to the effective Flood Insurance Rate Map (FIRM), available from your local floodplain administrator or the FEMA Map Service Center (<http://msc.fema.gov>)

USAGE

The elevations shown on this map are considered best available data until issuance of updated Flood Insurance Rate Maps.

OBSERVED SANDY SURGE ELEVATIONS^{1,6}

Approximately 12-13 ft on this Panel



NOTES

LEGEND

- | | |
|--|--|
| Advisory Base Flood Elevation Zone (ABFE) ² | Advisory Limit of the 1% Annual Chance Flood Hazard Area ² |
| 1% EL | Advisory Limit of the 0.2% Annual Chance Flood Hazard Area ² |
| 0.2% EL | Advisory Shaded Zone X |
| Area of Moderate Wave Action | Effective FIRM Panel Boundary |
| Advisory Flood Hazard Zone A | Hurricane Sandy Provisional Hurricane Sandy Surge Elevation ^{1,6} |

Geographic Boundaries

- CBRA⁵ County State

OVERVIEW MAP

