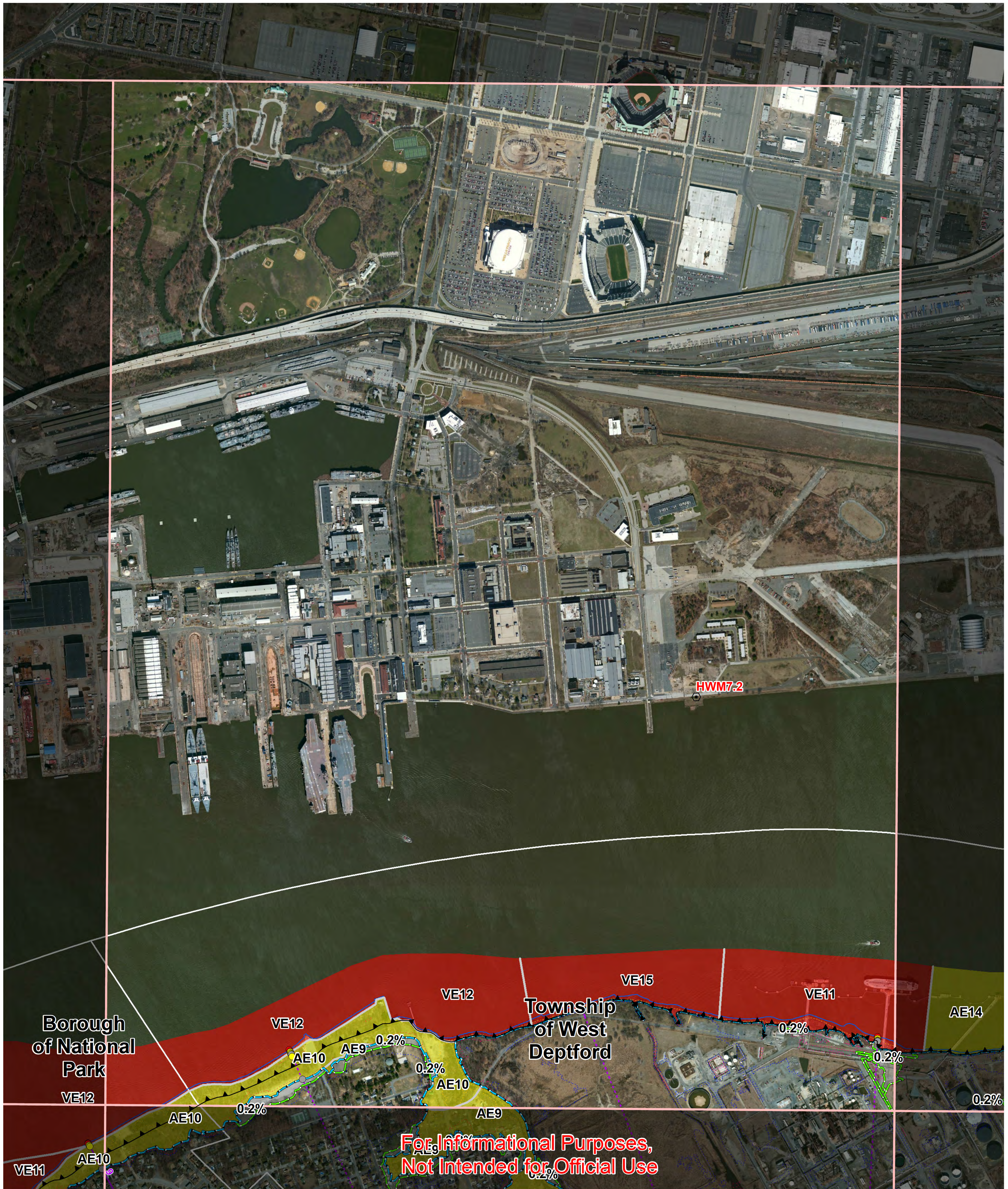


Gloucester County, NJ Preliminary Work Map



For Informational Purposes,
Not Intended for Official Use

0 0.125 0.25 0.5 0.75 1 Miles

Flood Hazard Information

- 0.2% Annual Chance Boundary
- 1% Annual Chance Boundary
- Gutter Line
- LiMWA
- AE
- VE
- AO
- Shaded X (0.2% Floodplain)
- Hurricane Sandy High Water Mark (HWM)

Published Transects

- Mapping Transects
- Shoreline
- Political Boundary

Elevation

- 4
- 8
- 12
- 16

Transect Station

- AE
- VE
- X

Legend:

- 0.2% Annual Chance Boundary (dashed green line)
- 1% Annual Chance Boundary (dashed blue line)
- Gutter Line (dashed purple line)
- LiMWA (dashed red line)
- AE (yellow fill)
- VE (red fill)
- AO (green fill)
- Shaded X (0.2% Floodplain) (grey X)
- Hurricane Sandy High Water Mark (HWM) (red circle with 'HWM')
- Published Transects (solid purple line)
- Mapping Transects (dashed purple line)
- Shoreline (dashed blue line)
- Political Boundary (dashed red line)
- Elevation 4 (dashed yellow line)
- Elevation 8 (dashed orange line)
- Elevation 12 (dashed green line)
- Elevation 16 (dashed blue line)
- Transect Station AE (yellow circle)
- Transect Station VE (red circle)
- Transect Station X (grey circle)

*Elevation information is provided in feet NAVD88.
High water marks are provided for reference to a historical storm event.
They are not intended to be used for validation of the coastal mapping
and are not expected to match the coastal BFEs.*

Panel 0018

This preliminary work map contains coastal flood hazard information only, riverine flood hazard information not included



FEMA

