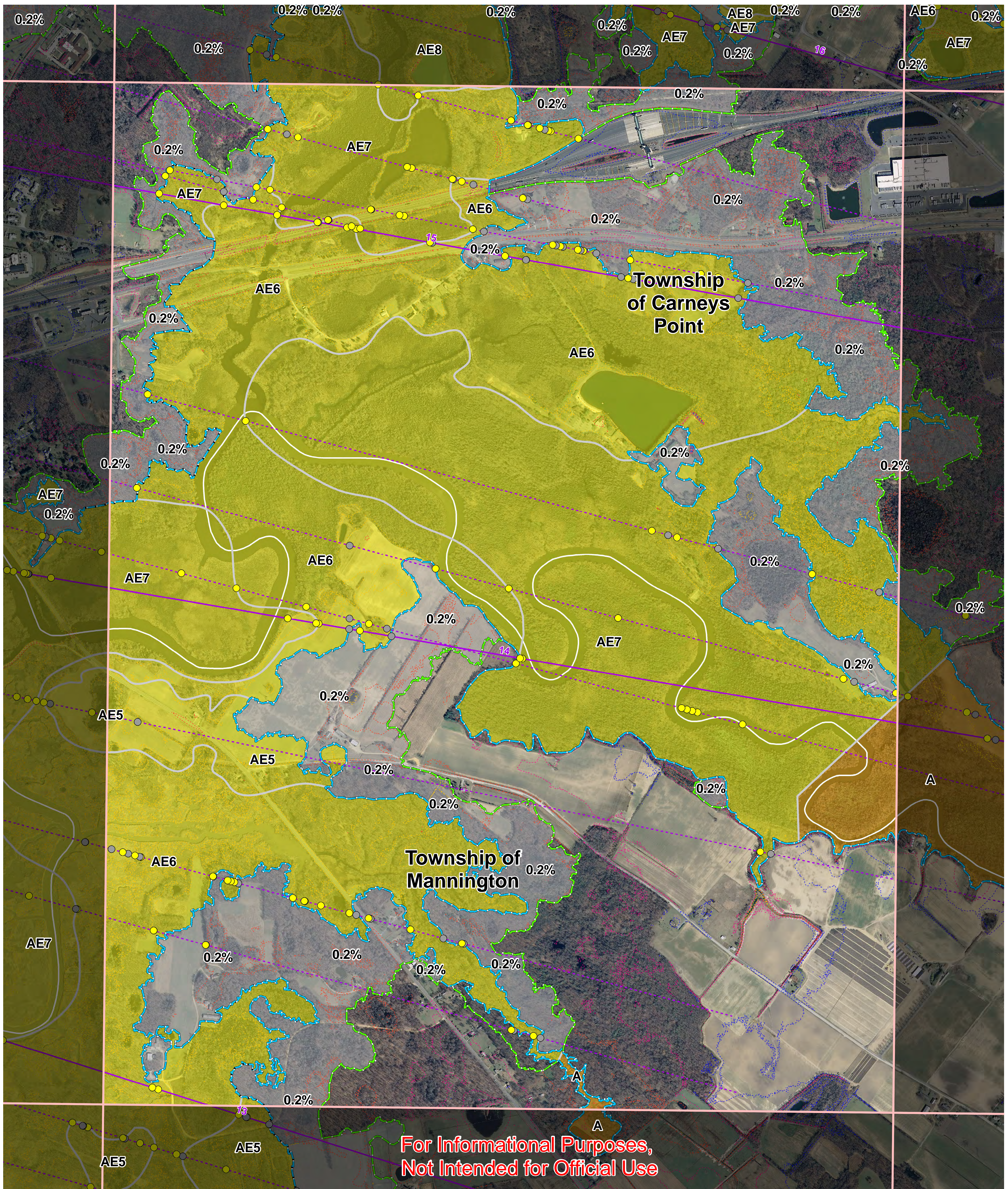


Salem County, NJ Preliminary Work Map



For Informational Purposes,
Not Intended for Official Use

0 0.125 0.25 0.5 0.75 1 Miles

Panel 0062

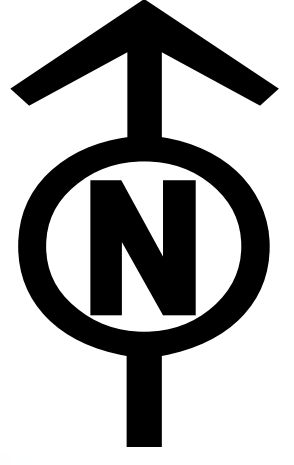
Flood Hazard Information

- 0.2% Annual Chance Boundary
- 1% Annual Chance Boundary
- Floodway
- LiMWA
- Riverine BFE
- VE
- AO
- Shaded X (0.2% Floodplain)
- Hurricane Sandy High Water Mark (HWM)
- Published Transects
- Mapping Transects
- Gutter Line
- PFD Line
- Shoreline
- Political Boundary
- Transect Station: AE, X
- Elevation: 4, 8, 12, 16

Elevation information is provided in feet NAVD88. High water marks are provided for reference to a historical storm event. They are not intended to be used for validation of the coastal mapping and are not expected to match the coastal BFEs.



FEMA



A JV of Dewberry, URS and ESP
RAMPP
Risk Assessment, Mapping, and Planning Partners

