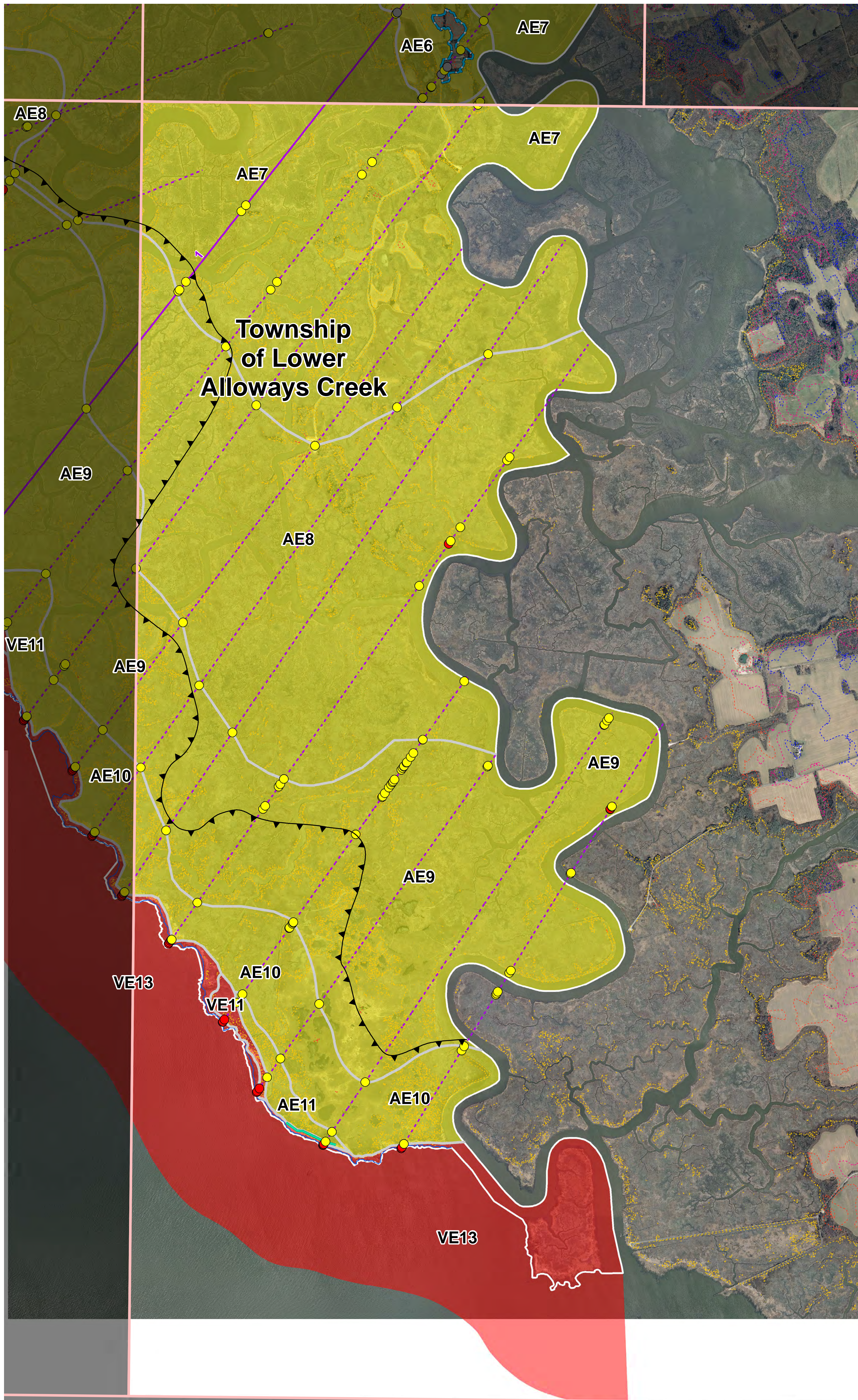
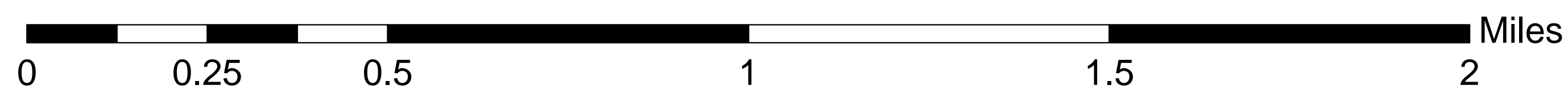


# Salem County, NJ Preliminary Work Map



For Informational Purposes,  
Not Intended for Official Use



Panel 0295

**Flood Hazard Information**

- 0.2% Annual Chance Boundary
- 1% Annual Chance Boundary
- Floodway
- LiMWA
- Riverine BFE
- VE
- AO
- Shaded X (0.2% Floodplain)
- Hurricane Sandy High Water Mark (HWM)

**Transect Station**

- AE
- A
- AE
- VE
- X

**Published Transects**

- Published Transects
- Mapping Transects

**Other Features**

- Gutter Line
- PFD Line
- Shoreline
- Political Boundary

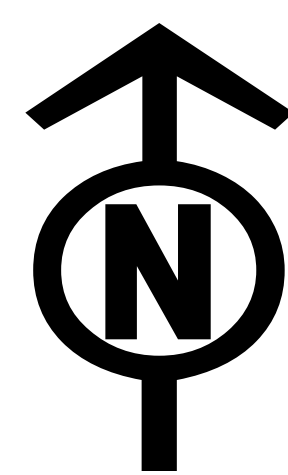
**Elevation**

- 4
- 8
- 12
- 16

Elevation information is provided in feet NAVD88.  
High water marks are provided for reference to a historical storm event.  
They are not intended to be used for validation of the coastal mapping  
and are not expected to match the coastal BFEs.



FEMA



A JV of Dewberry, URS and ESP  
**RAMPP**  
Risk Assessment, Mapping, and Planning Partners

