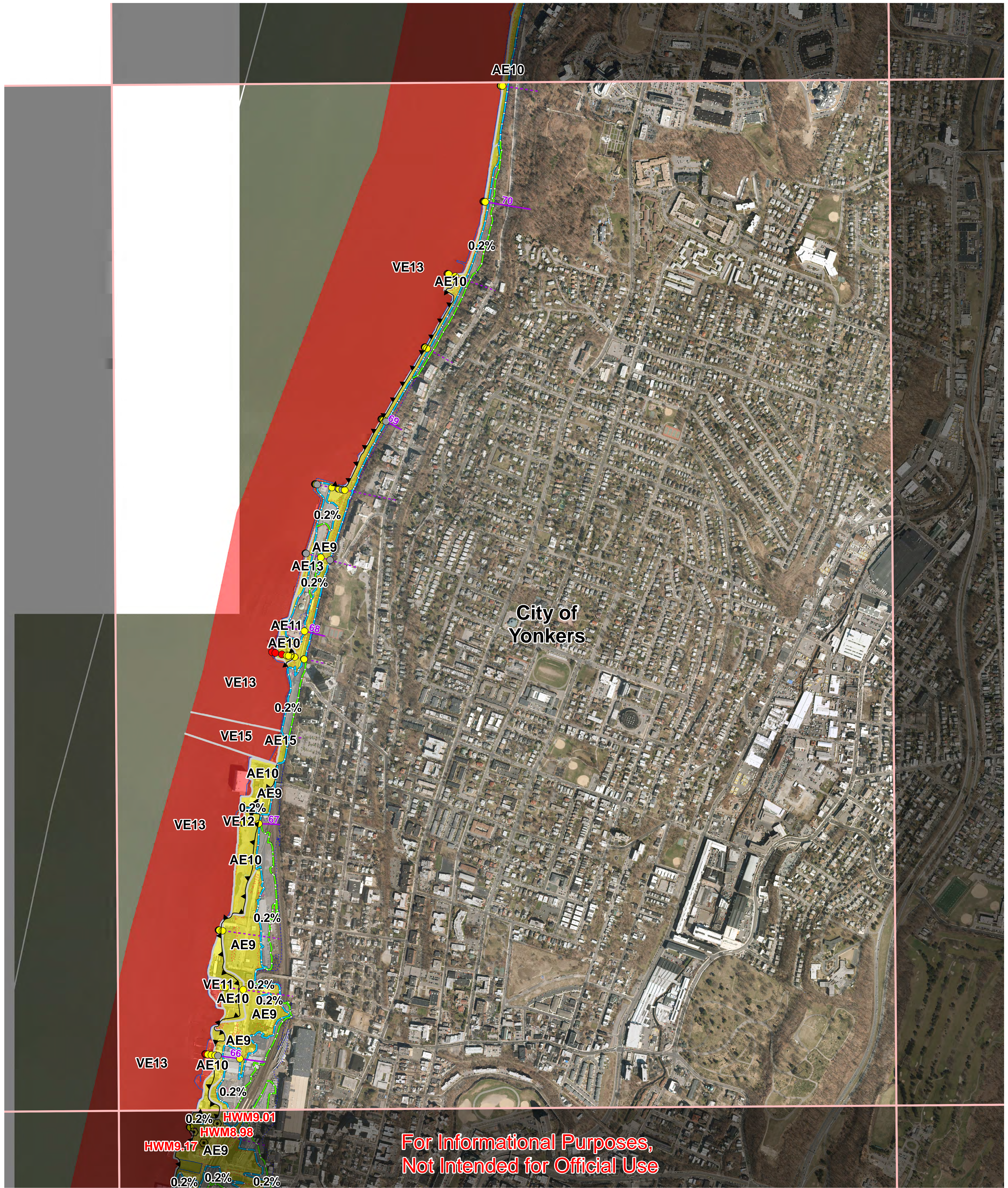


Westchester County, NY Preliminary Work Map



For Informational Purposes,
Not Intended for Official Use

0 0.125 0.25 0.5 0.75 1 Miles

Flood Hazard Information

- 0.2% Annual Chance Boundary
- 1% Annual Chance Boundary
- Gutter Line
- LiMWA
- AE
- VE
- AO
- Shaded X (0.2% Floodplain)
- Hurricane Sandy High Water Mark (HWM)

Published Transects

- Mapping Transects
- Shoreline
- Political Boundary

Transect Station

- AE
- VE
- X

Elevation

- 4
- 8
- 12
- 16

Elevation information is provided in feet NAVD88. High water marks are provided for reference to a historical storm event. They are not intended to be used for validation of the coastal mapping and are not expected to match the coastal BFEs.

Panel 0309

This preliminary work map contains coastal flood hazard information only, riverine flood hazard information not included



FEMA

