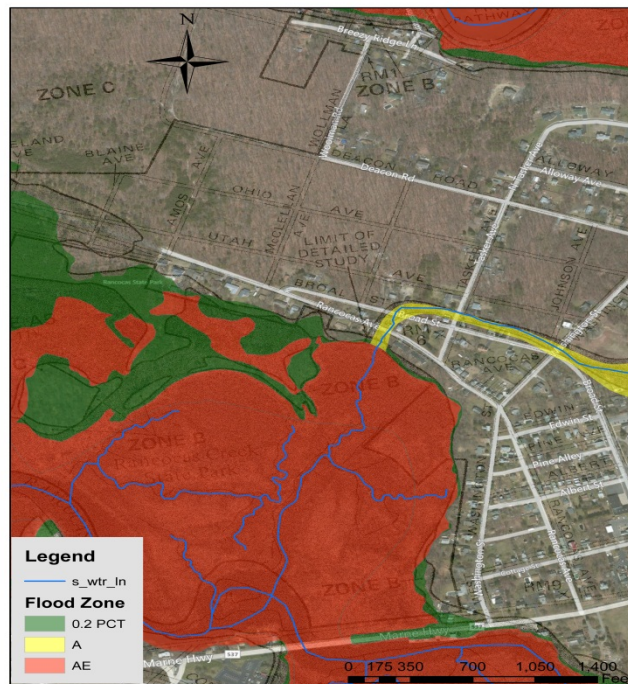


Areas for Further Review

1. South Branch Rancocas Creek: As per County

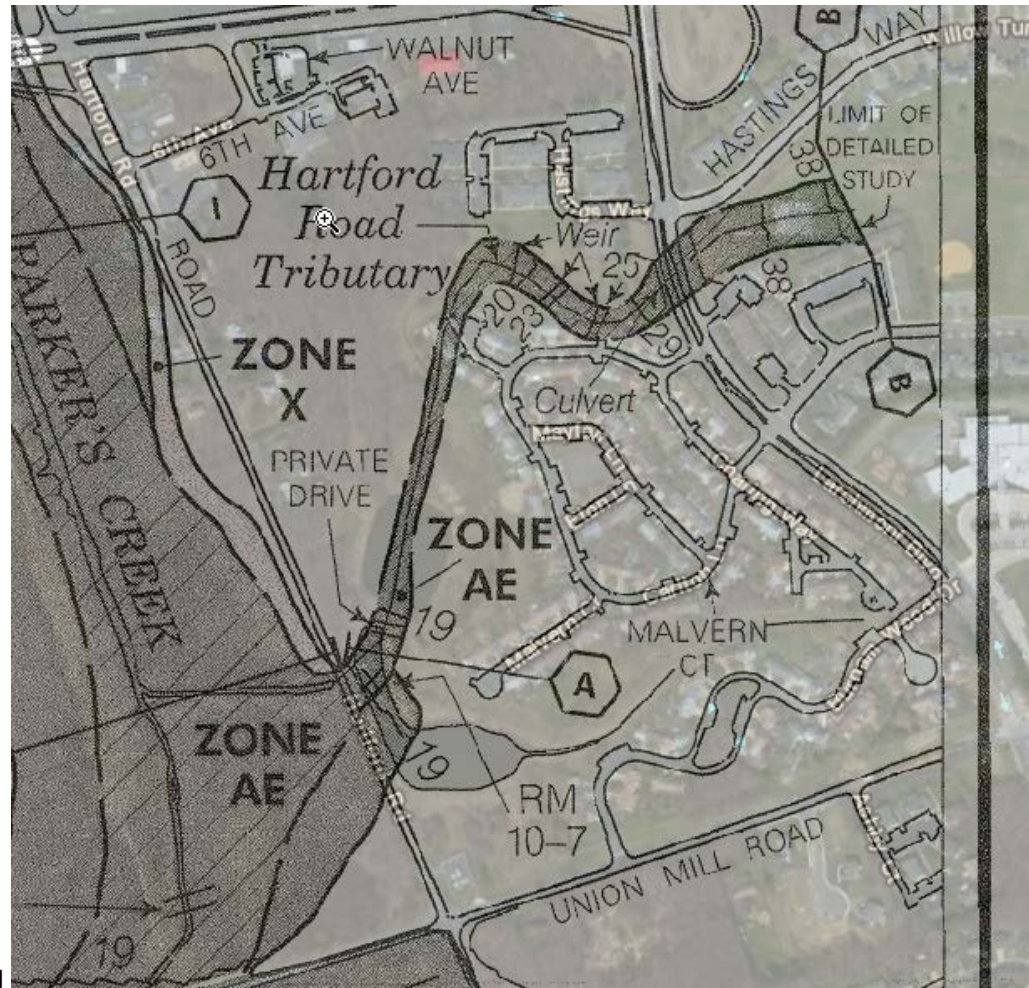
There are concerns about the ditch extends off of the South Branch Rancocas Creek floodplain and is located on effective panel 3400990005A/preliminary panel 34005C0252F. The floodplain mapping shows the stream centerline running through a homeowner's house; however, a closer look at aerial imagery reveals that it was mapped incorrectly for the effective and same issue exists for the preliminary.

Township of Hainesport, Burlington County, NJ



2) Hartford Road Tributary has been rerouted from what was on the "Draft" preliminary maps and the 1999 and 1987 effective maps.

1999 FIRM



1987 FIRM



1985 Imagery

