

Flood Risk Project

Ontario County, New York,
Hydraulics Results Discussion
September 2020

43

Agenda


Recap/Refresh


Hydraulics
Analysis Review

Path Forward


44

44





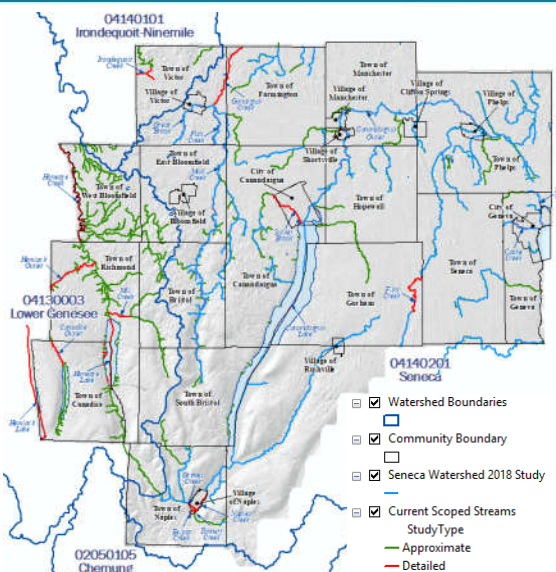
What Have We Done So Far? Recap/Refresh




45

Countywide Flood Risk Study *Stream Study Scope*

- ▶ **First time digital countywide maps**
- ▶ **Additional flooding sources analyzed**
 - 41.5 miles - Detailed (AE) streams
 - 187 miles – Approximate (A) streams
 - 12 miles - Lake Gage Analysis
- ▶ **Includes Seneca Watershed study**
- ▶ **29 affected communities**
- ▶ **134 map panels**
- ▶ **Multiple touchpoints**



- ☒ Watershed Boundaries
- ☒ Community Boundary
- ☒ Seneca Watershed 2018 Study
- ☒ Current Scoped Streams
- StudyType
- Approximate
- Detailed



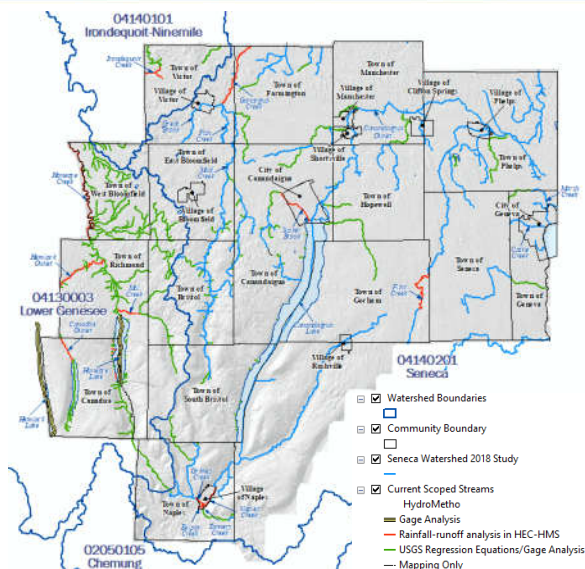
46

Hydrologic Analysis Detailed Studies

- ▶ **29 Flooding Sources**
- ▶ **Hydrologic Analyses**
 - Stage-Discharge relationship
 - Hemlock Lake
 - Honeoye Lake
 - Rainfall-Runoff modeling
 - 41 miles
 - USACE's HEC-HMS Program
 - Discharges developed for
 - 10%, 4%, 2%, 1%, 1%+, 1%-, 0.2%



FEMA



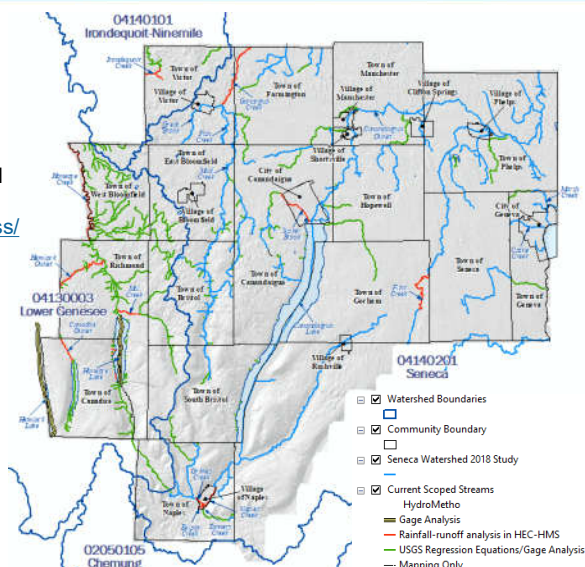
47

Hydrologic Analysis Approximate Studies

- ▶ **290 Flooding Sources**
- ▶ **Hydrologic Analyses**
 - State of New York Region 5 Regression Equations
 - Streamstats – GIS web based application @ <https://streamstats.usgs.gov/ss/>
 - Discharges developed for
 - 10%, 4%, 2%, 1%, 1%+, 1%-, 0.2%




FEMA




48

RiskMAP
Increasing Resilience Together



Where are we now? Hydraulics Analysis Review



49

Flood Hazard Analysis



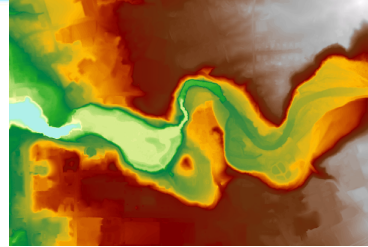
<h3>Hydrology</h3> <p>Volume of water? Peak Flows?</p> <p>When will storm water or runoff make it to the stream?</p>	<h3>Hydraulics</h3> <p>Will the stream in question be able to convey all storm water or runoff that arrives?</p>	<h3>Floodplain Mapping</h3> <p>What areas of a community will be inundated based on engineering analysis?</p>
--	--	---

50

Data Sources – Base maps

► Topography

- 5-meter Digital Elevation Model from New York State (2006) and 2ft contours
- Shared comparison of LiDAR and survey in December 2019



► Aerial Imagery

- New York Statewide Digital Orthoimagery Database (2019)



51

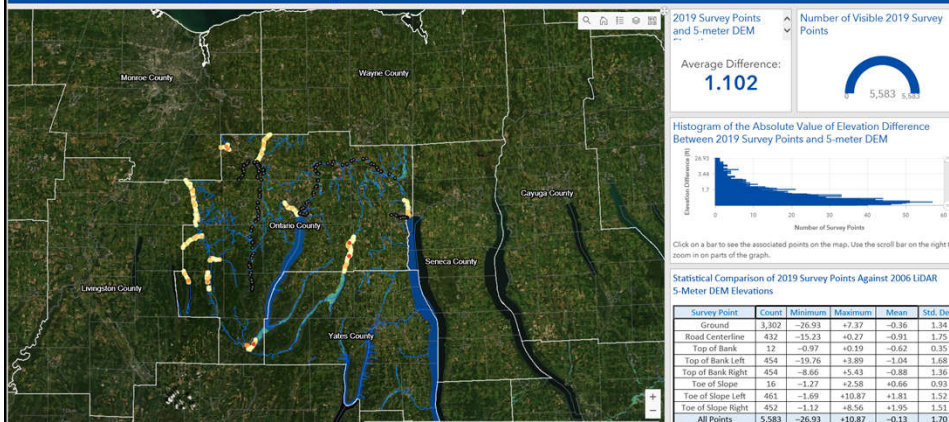
RiskMAP
Increasing Resilience Together

51

LiDAR vs Survey Data Comparison

<https://region2-fema.opendata.arcgis.com/>

Survey Point & DEM Elevation Comparison - Ontario County, NY



52

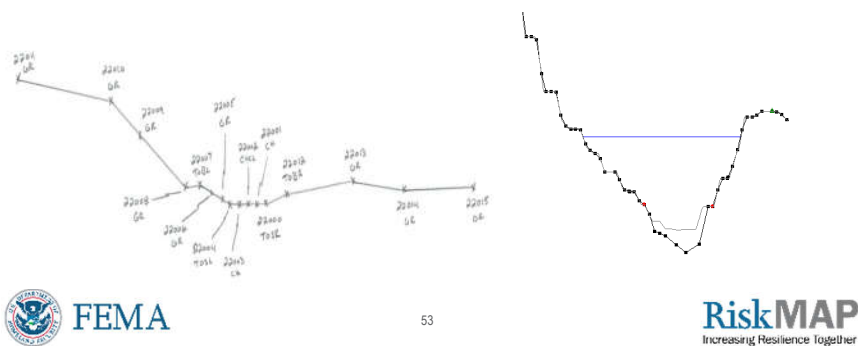
RiskMAP
Increasing Resilience Together

52

Data Sources - Survey

► Channel and floodplain geometry

- For approximate reaches, extracted from LiDAR data
 - Updated with field reconnaissance measurements
- For detailed reaches, survey data incorporated



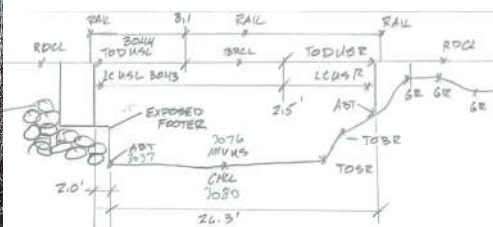
53

53

Data Sources - Structures

► Bridges, culverts, and dams

- New York State's Inventory of Dams (approximate reaches)
- NYDOT Bridge Inventory (approximate reaches)
- Field reconnaissance (approximate reaches)
- Survey (detailed reaches)



54



54

Data Sources - Field Reconnaissance

- 3 days of field visits in December 2019
- Site conditions observations
 - Roadway deck thickness
 - Channel – brush, grass, river cobbles?
 - Floodplain – grass, development, trees?



FEMA

55

RiskMAP
Increasing Resilience Together

55

Data Sources – Field Reconnaissance

► Field Reconnaissance

- Identified 31 most “critical” bridges or culverts and lakes and outlets
- In proximity to homes, schools, or other buildings
- Preliminary modeling shows that structures affect flooding elevations



FEMA

56

RiskMAP
Increasing Resilience Together

56

Data Sources

► Mannings “n”

- For approximate reaches, land use from National Land Cover Database (2016)
- For detailed reaches, further refined using aerial imagery/ Survey data and field visit

NLCD Grid code	NLCD Description	N-Value (Channel)	N-Value (Overbank)
11	Open Water	0.030-0.050	0.030-0.050
71	Herbaceous Grassland	0.030	0.020-0.100
31	Barren (Rock/Sand/Clay)	0.035	0.020-0.100
81	Pasture/Hay	0.035	0.040-0.150
82	Cultivated Crops	0.035	0.035-0.100
21	Developed open space (lawn, <20% impervious)	0.050	0.035-0.150
22	Developed, Low Intensity (20-49% impervious)	0.050	0.020-0.150
52	Shrub/Scrub	0.050	0.070-0.140
95	Emergent Herbaceous Wetlands	0.070	0.035-0.150
23	Developed, Med Intensity (50-79% impervious)	0.035	0.020-0.110
90	Woody Wetlands	0.070	0.035-0.015
24	Developed, High Intensity (80-100% impervious)	0.035	0.020-0.140
41	Deciduous Forest (tall trees >20% of cover)	0.050	0.045-0.150
43	Mixed Forest (tall trees >20% of cover)	0.050	0.035-0.150
42	Evergreen Forest (tall trees >20% of cover)	0.050	0.110-0.150



57



57

Modeling Approaches



► USACE's HEC-RAS 5.0.7

► Boundary Conditions

- 1D – Known water surface elevation (to tie-in to adjacent studies) or normal depth slope



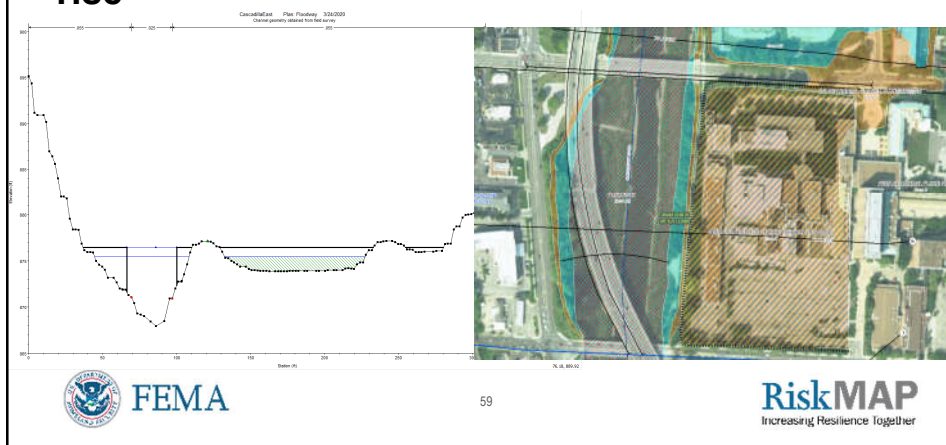
58



58

Floodway Analysis

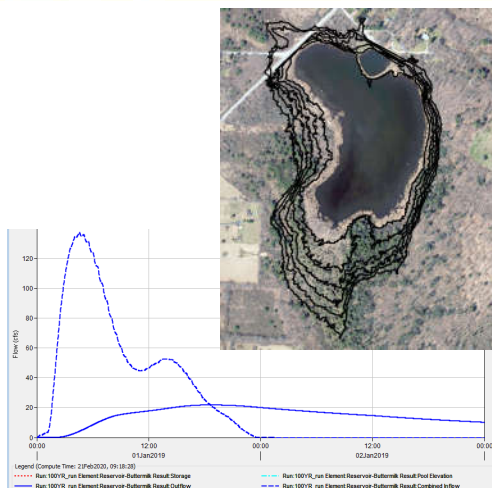
- Detailed Streams only
- Encroachments placed to achieve target 1.0' rise



59

Volumetric Analysis

- Pond-Like / Storage Areas
 - Use topography data to find volume that basin can hold
 - Use hydrology to find the volume of runoff entering basin
 - Create a stage-storage curve to find elevation within basin



60

Hydraulics Report

Contents

1.1	Study Area	1
1.2	Purpose and Type of Study	3
1.3	Scope of Work	3
1.4	Effective Flood Insurance Studies	5
1.5	Studies Performed by Others	6
2.1	Study Limits and Methodology	7
2.2	Discharges	7
2.3	Topographic Data	7
2.4	Survey	7
2.4.1	Field Reconnaissance	8
2.5	Aerial Imagery	8
2.6	Detailed 1D Methodology	8
2.6.1	Boundary Conditions	8
2.6.2	Cross Sections	11
2.6.3	Structures	11
2.6.4	Expansion and Contraction Loss Coefficients	11
2.6.5	Ineffective and Storage Areas	12
2.6.6	Channel Roughness Values	12
2.6.7	Floodway	13
2.7	Approximate 1D Methodology	13
2.7.1	Boundary Conditions	13
2.7.2	Cross Sections	13
2.7.3	Structures	13
2.7.4	Ineffective Areas	14
2.7.5	Channel Roughness Values	14
2.7.6	Expansion and Contraction	14
2.8	Quality Management	14
2.9	Special Issues	14
2.9.1	Naples Creek – Town / Village of Naples	14



FEMA

61

RiskMAP
Increasing Resilience Together

61

Results of the Study

► New countywide floodplains data

- Expanded floodplain coverage
- Added additional streams with Base Flood Elevations
- Continuous modeling and mapping outside of community boundaries
 - To support future community development
- Includes 500-year floodplain



FEMA

62

RiskMAP
Increasing Resilience Together

62

Floodplain Mapping Comparisons

► New countywide digital data

- Previous maps produced in 1970s-1980s
- Reason for changes in Floodplains and Base Flood Elevations (BFEs)
 - New Topography
 - Channel and Structure Survey
 - Changes to Land Use
 - Changes to Rainfall
 - Detailed Hydrologic and Hydraulic Analysis



63



63

Summary at Community level

Current Study

CID *	POL_NAME1
360597	City of Canandaigua
360599	City of Geneva
361414	Town of Bristol
361297	Town of Canadice
360598	Town of Canandaigua
361298	Town of East Bloomfield
361299	Town of Farmington
360600	Town of Geneva
360601	Town of Gorham
361300	Town of Hopewell
361301	Town of Manchester
360602	Town of Naples
361302	Town of Phelps
360604	Town of Richmond
361248	Town of Seneca
360606	Town of South Bristol
361249	Town of Victor
360607	Town of West Bloomfield
361450	Village of Clifton Springs
361014	Village of Manchester
360603	Village of Naples
360605	Village of Shortsville

Studied in 2018

CID *	POL_NAME1
361650	Village of Bloomfield
361450	Village of Clifton Springs
361050	Village of Phelps
360964	Village of Rushville
360964	Village of Rushville
361648	Village of Victor



Minor Updates only



64



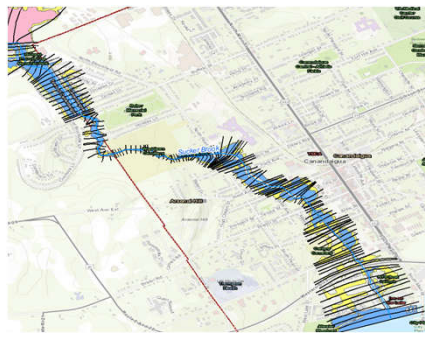
64

City of Canandaigua – Sucker Book

Effective Maps



New Maps



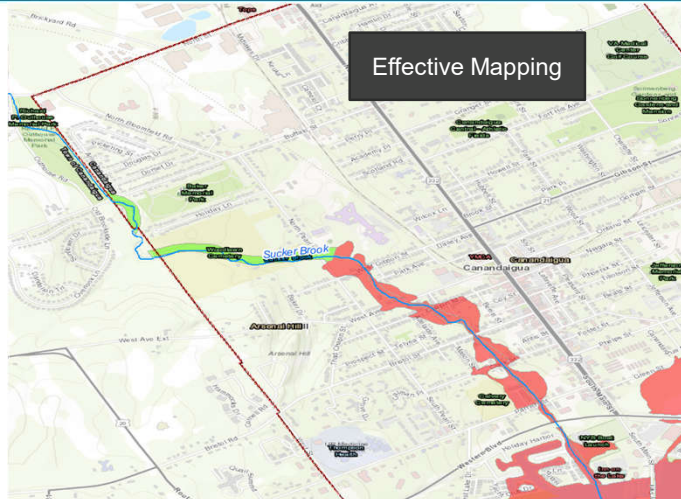
65



65

City of Canandaigua

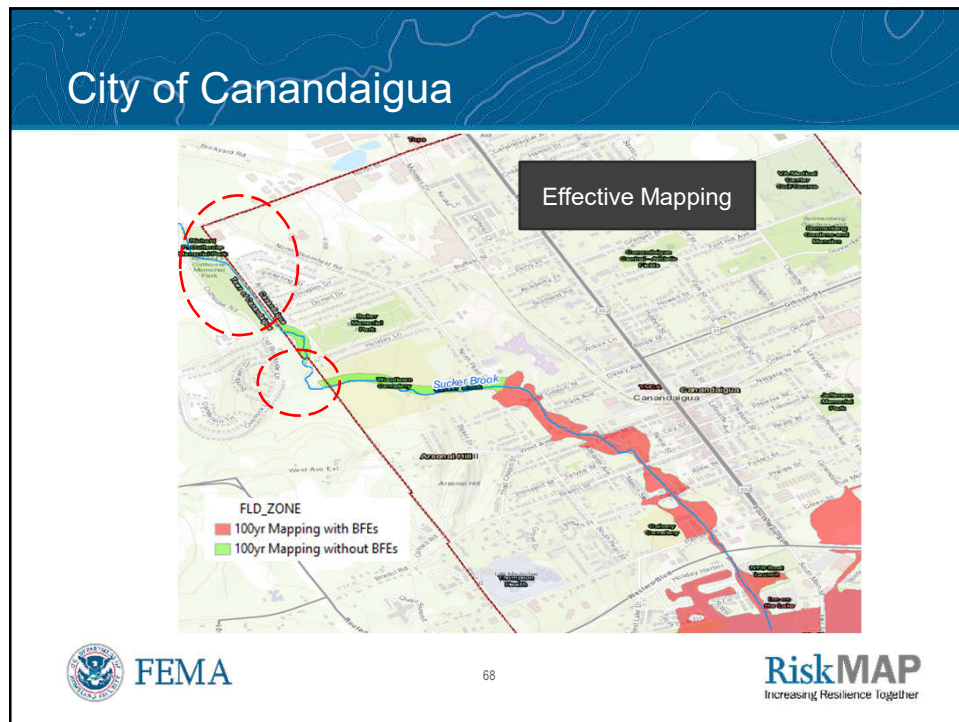
Effective Mapping



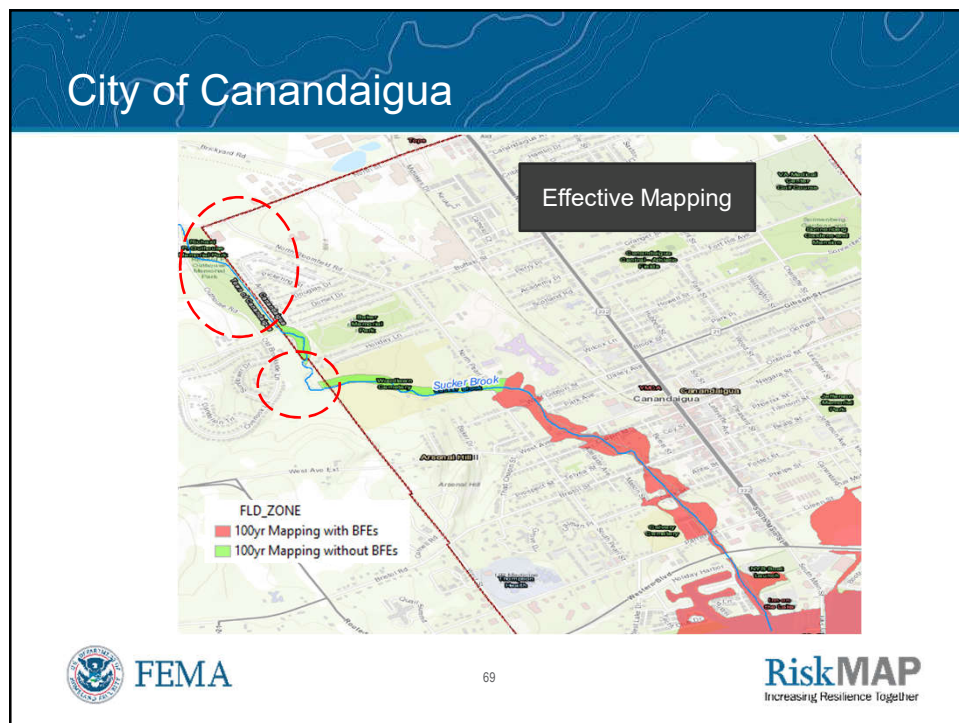
67



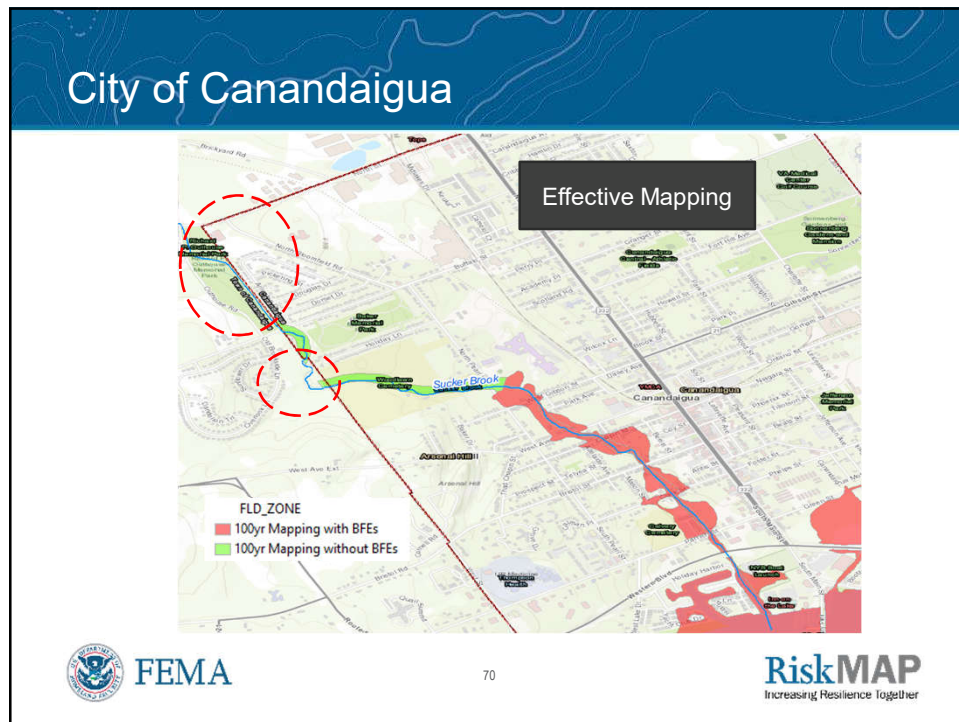
67



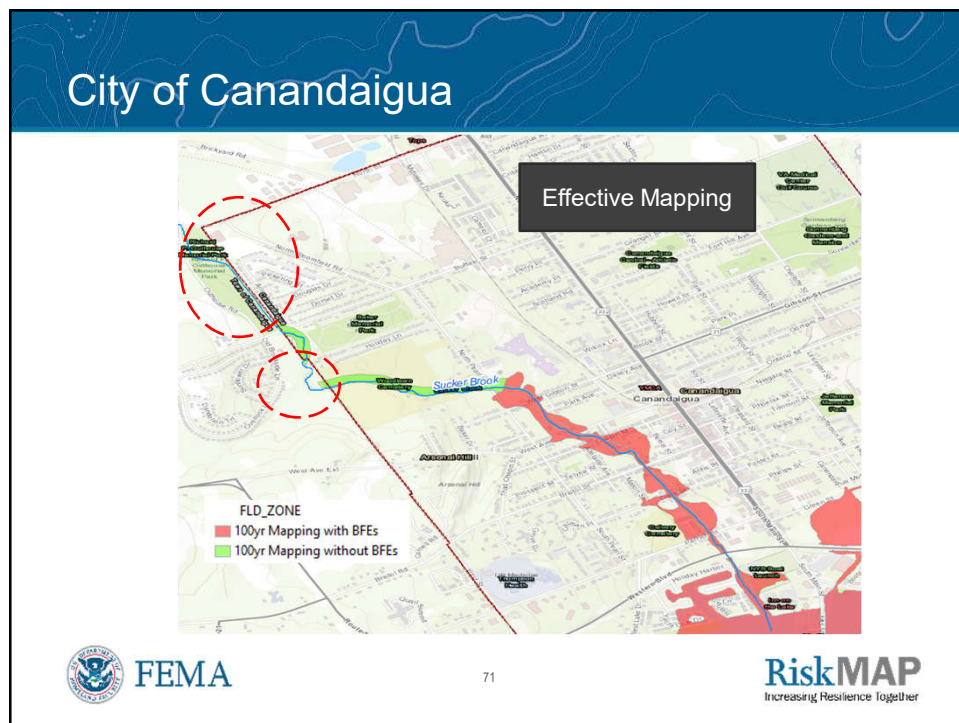
68



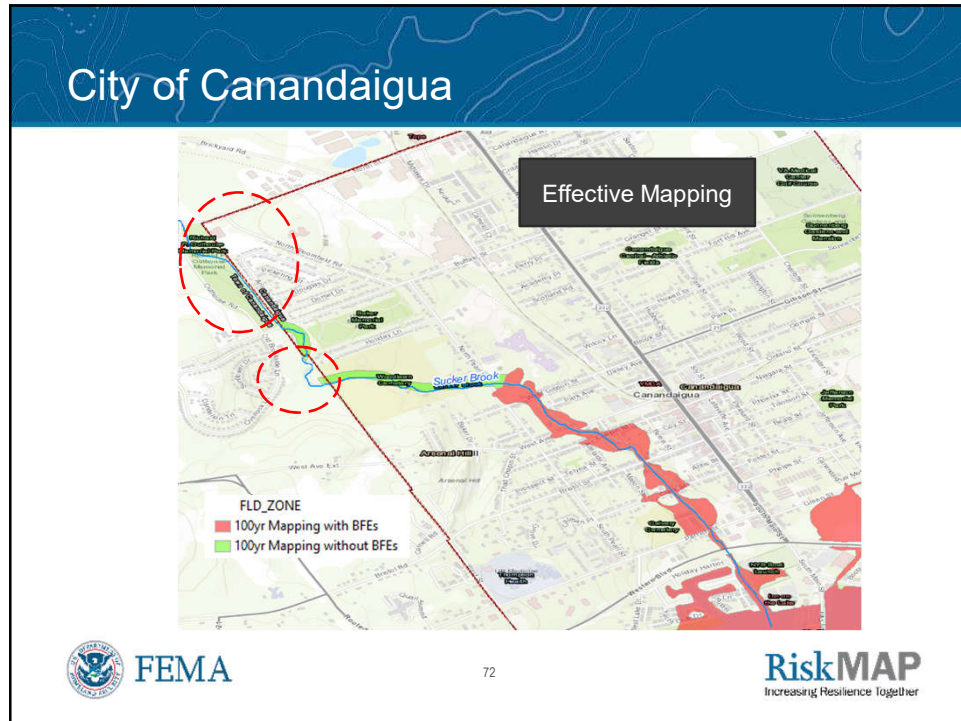
69



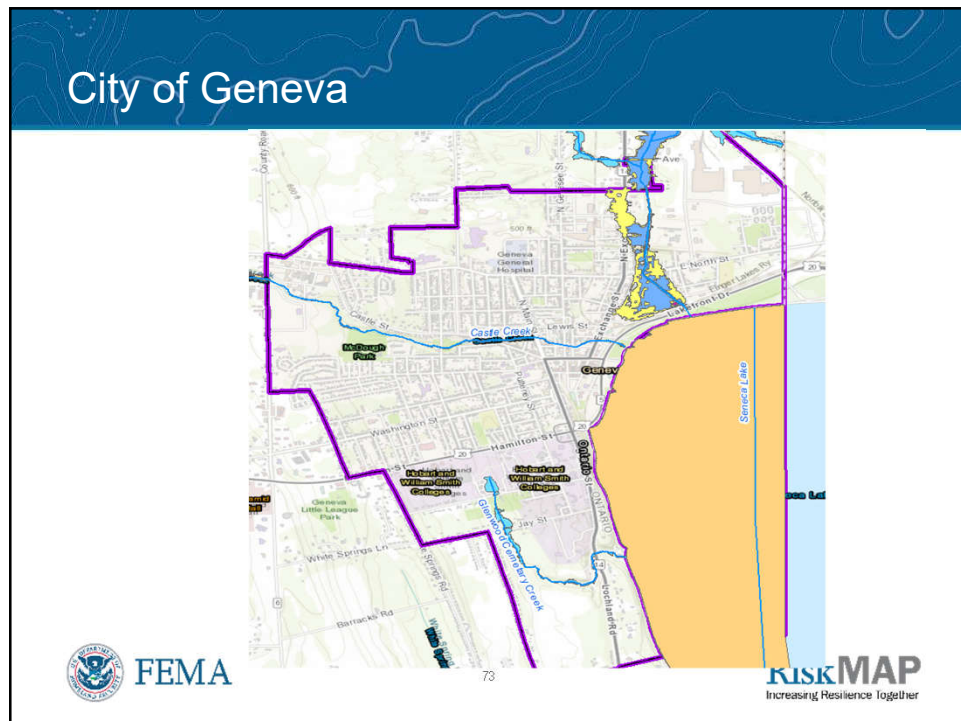
70



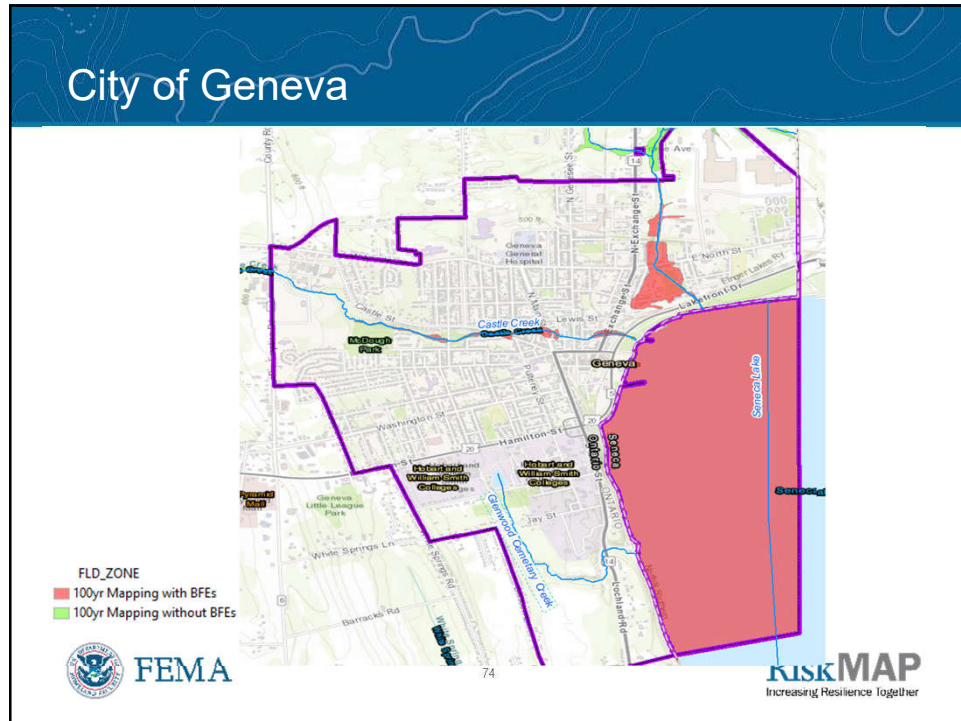
71



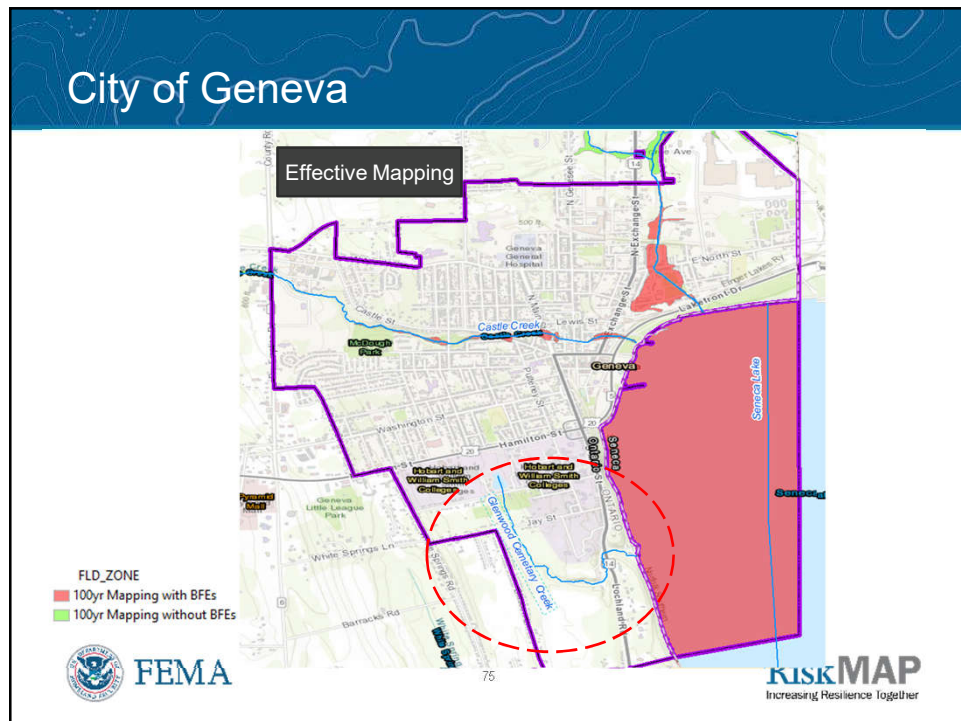
72



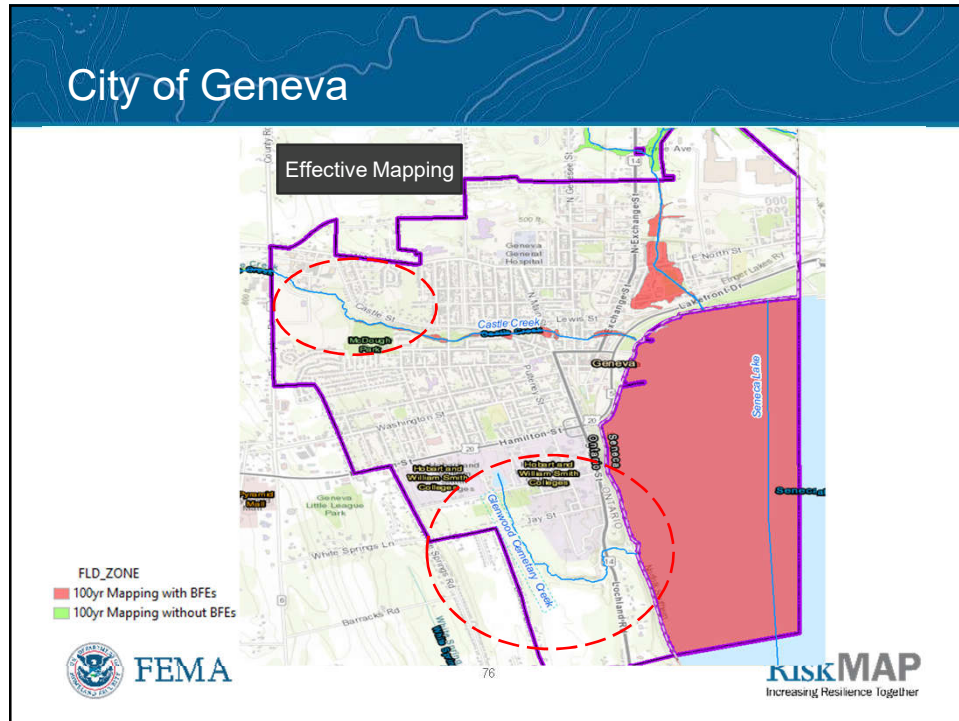
73



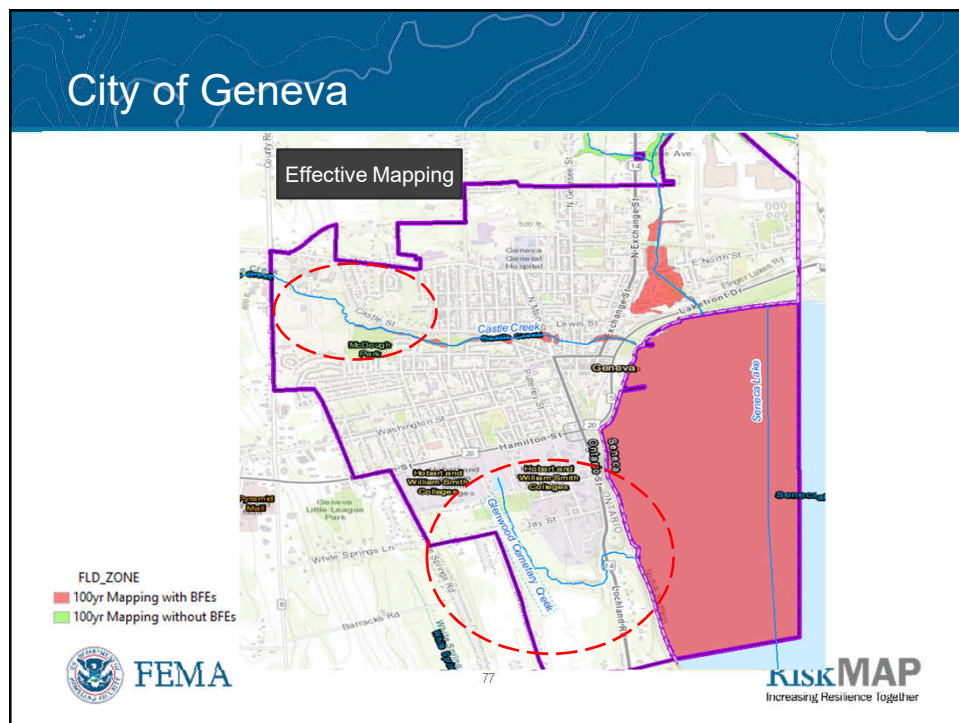
74



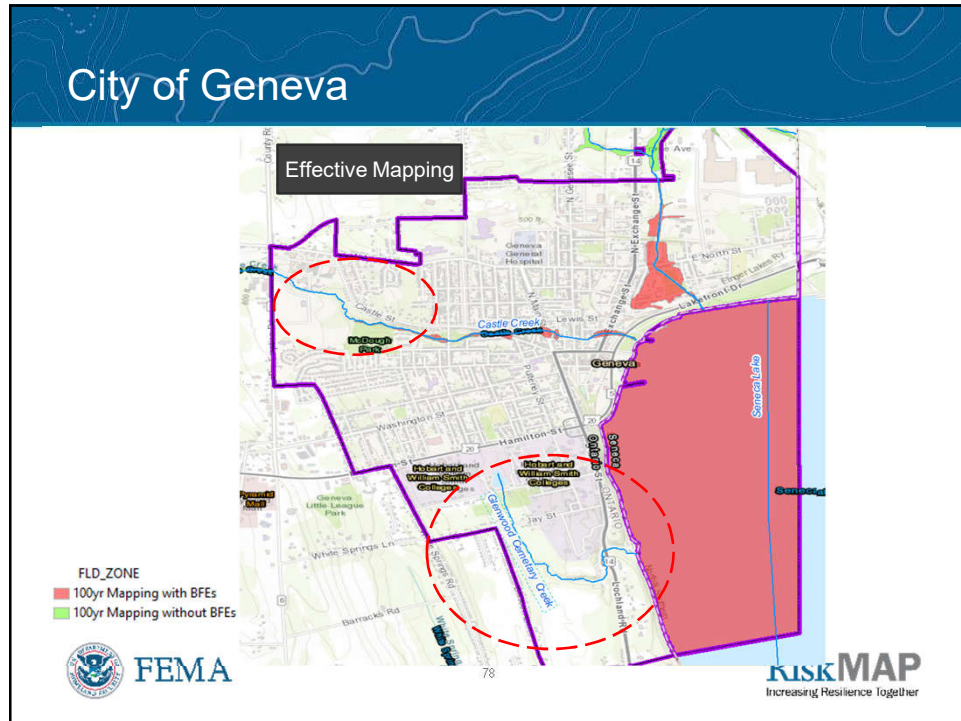
75



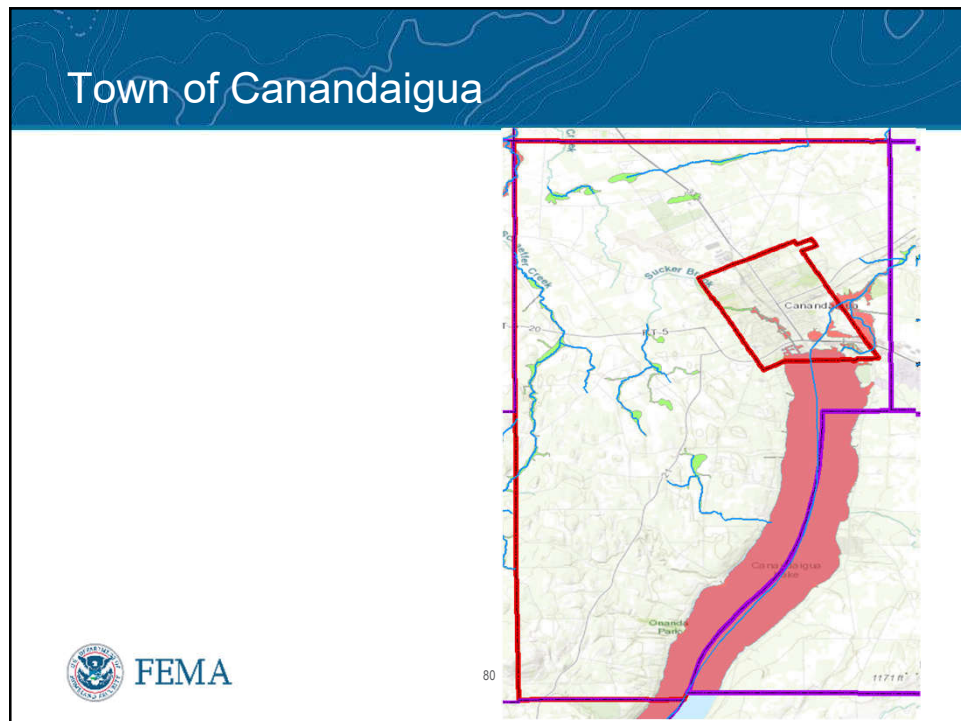
76



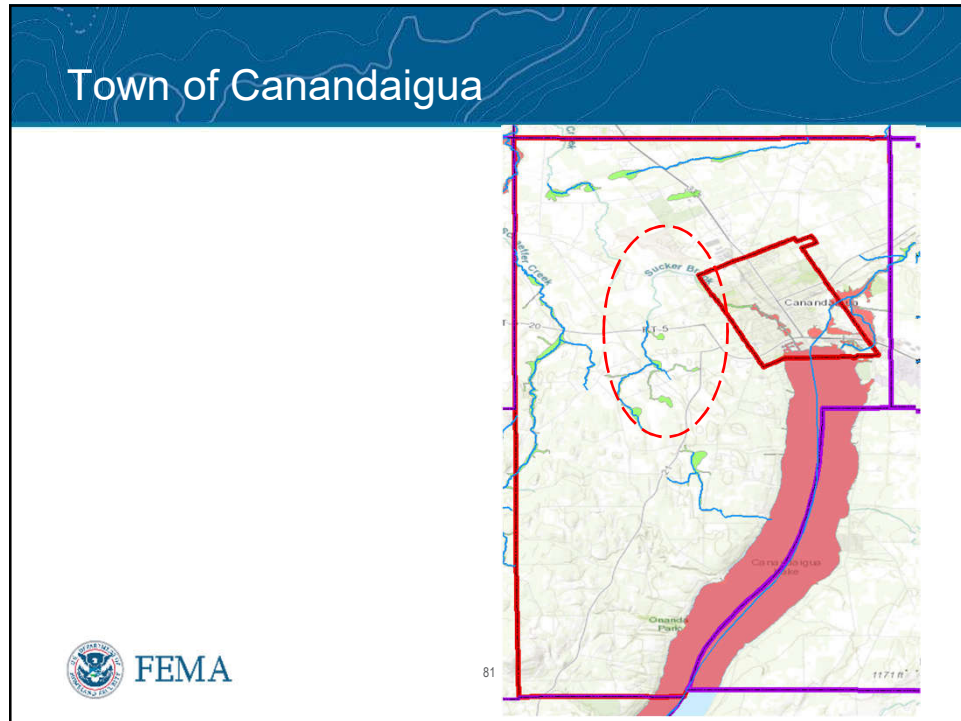
77



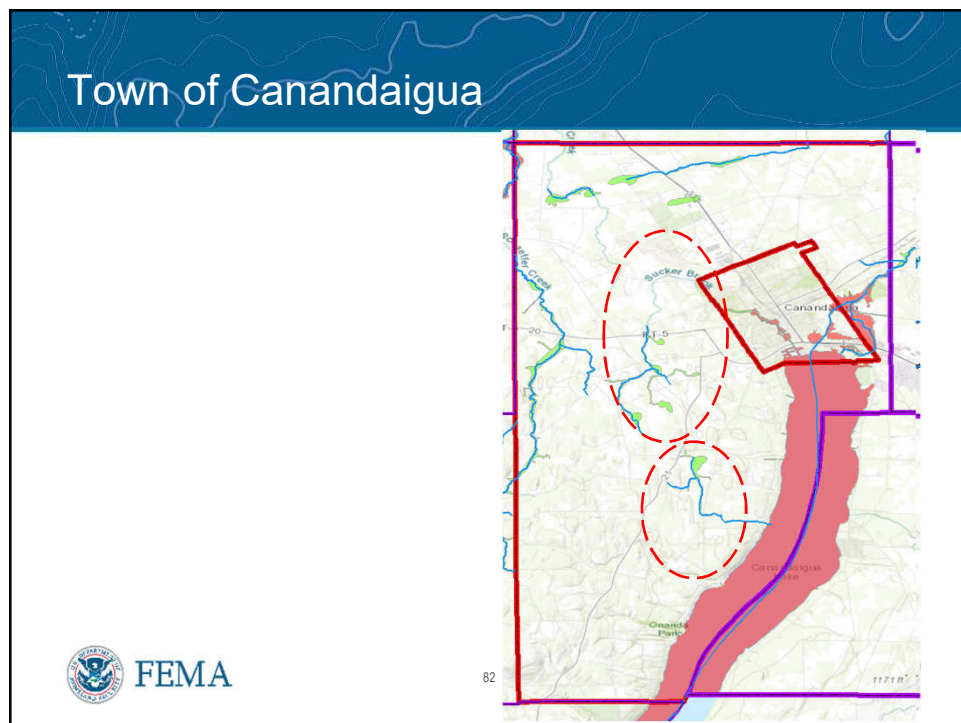
78



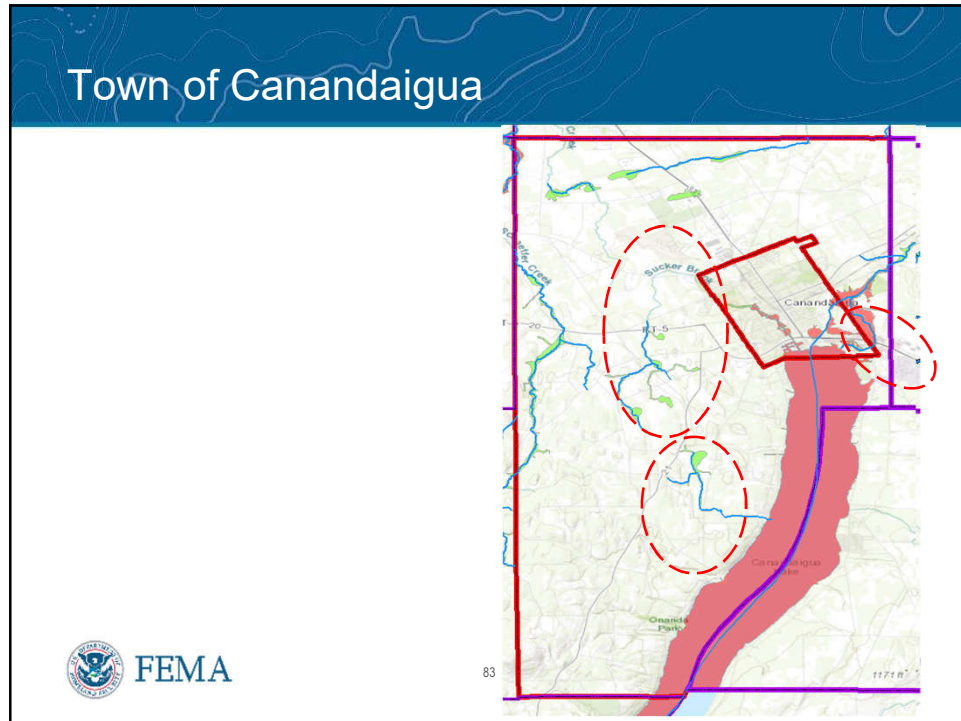
80



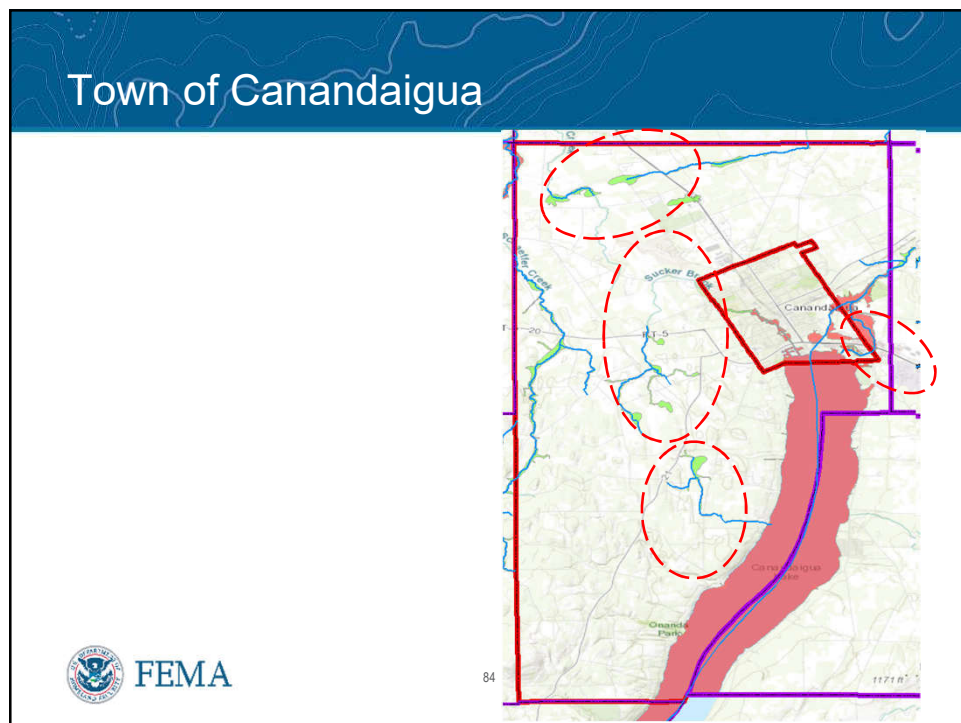
81



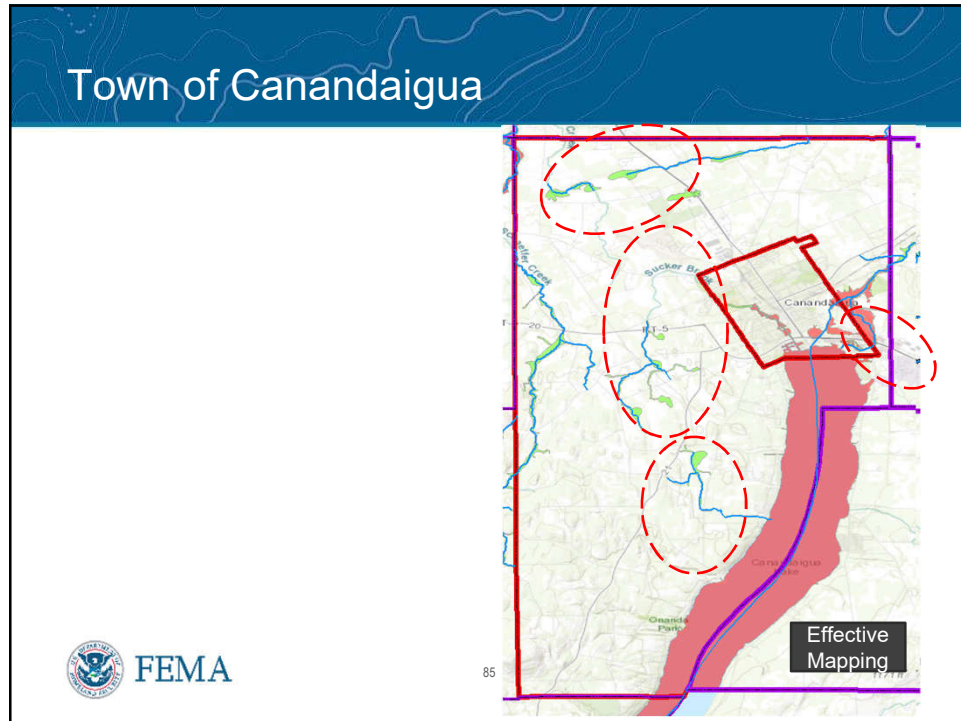
82



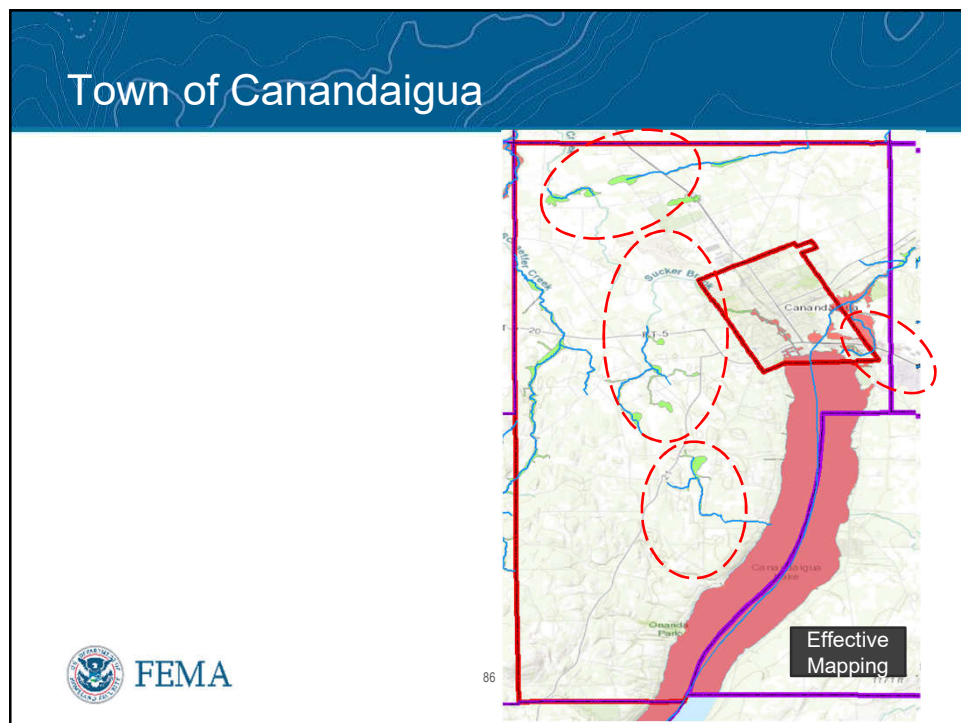
83



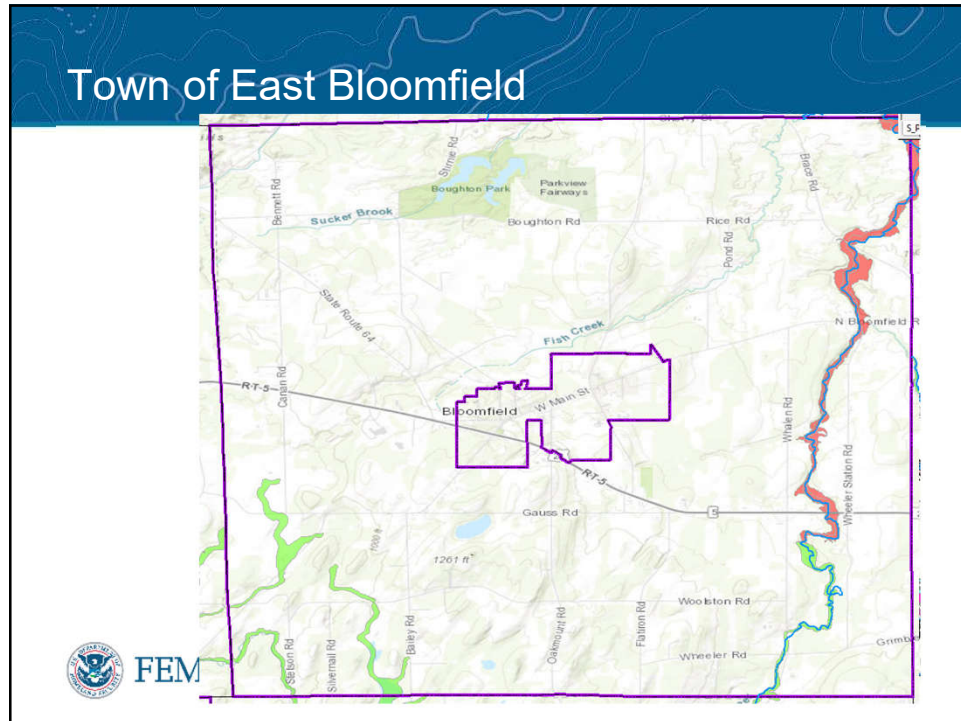
84



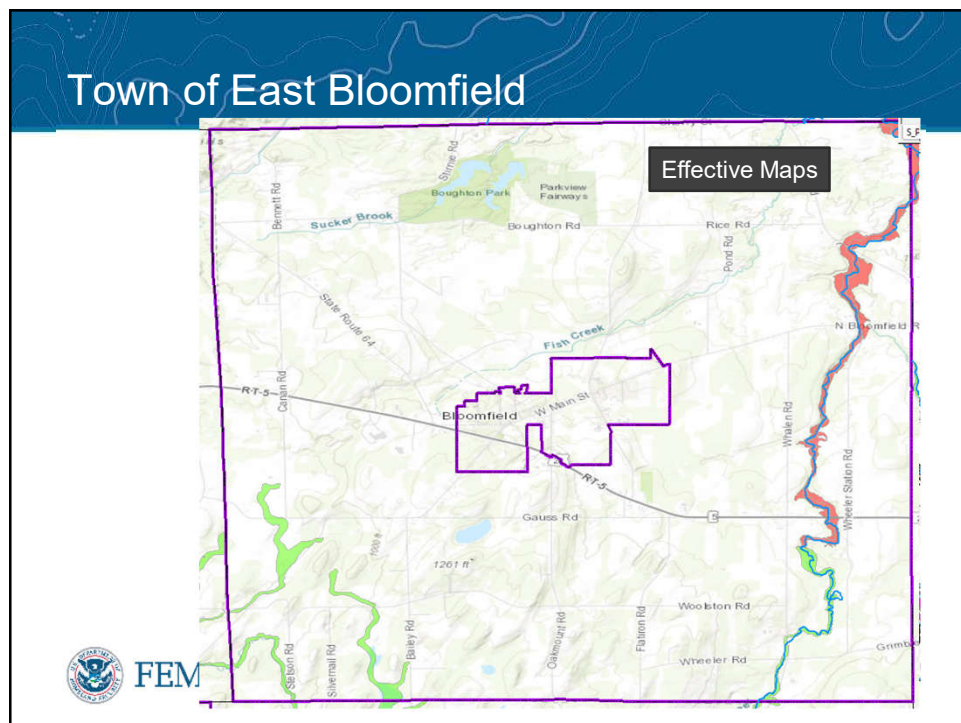
85



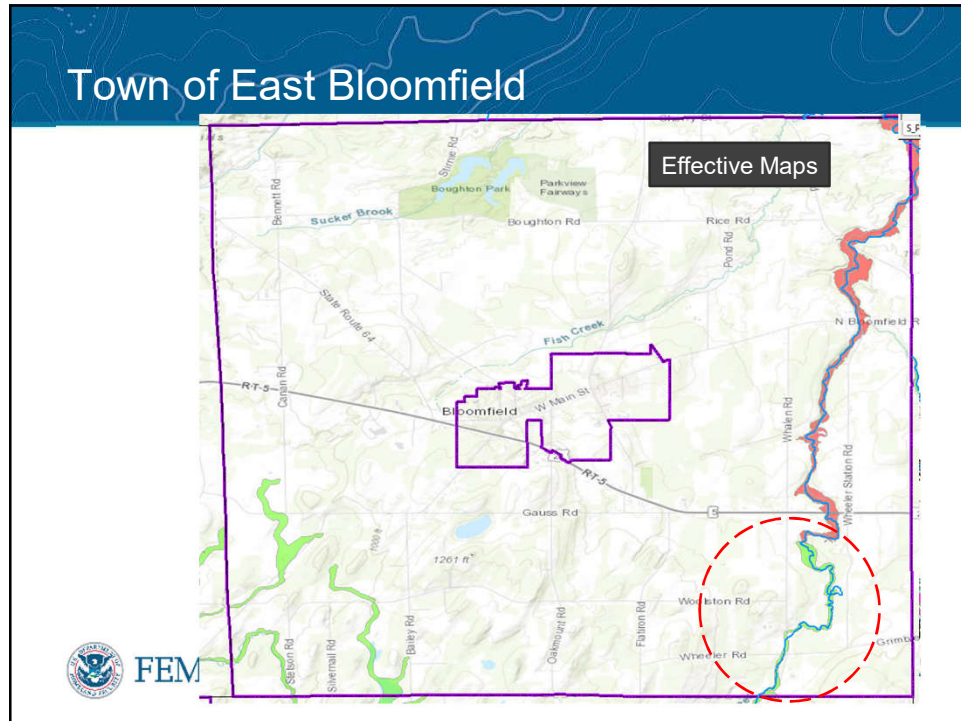
86



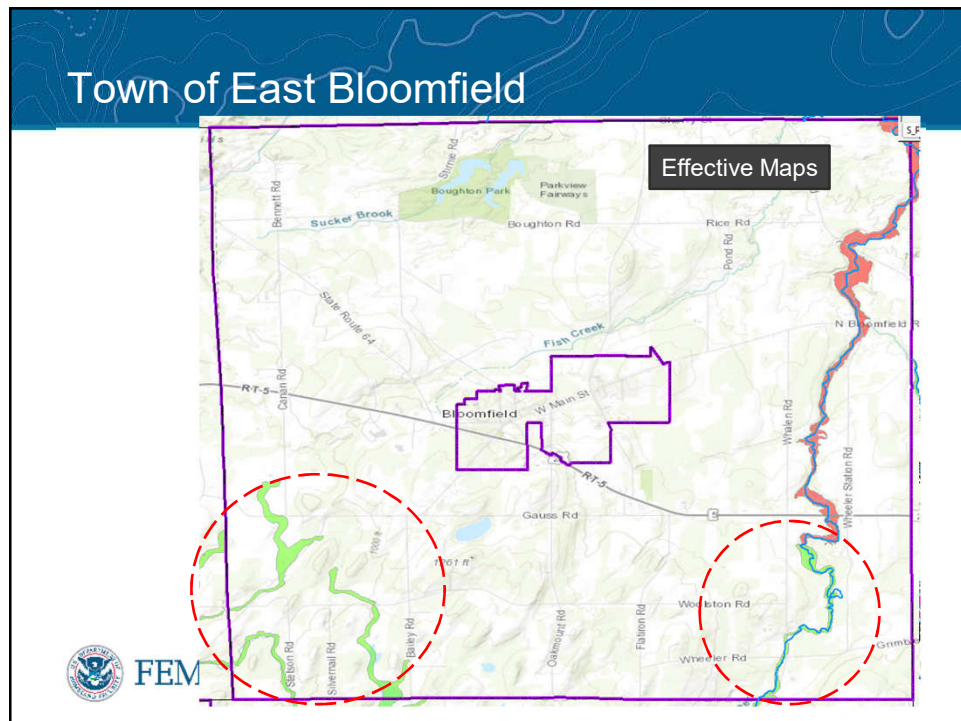
88



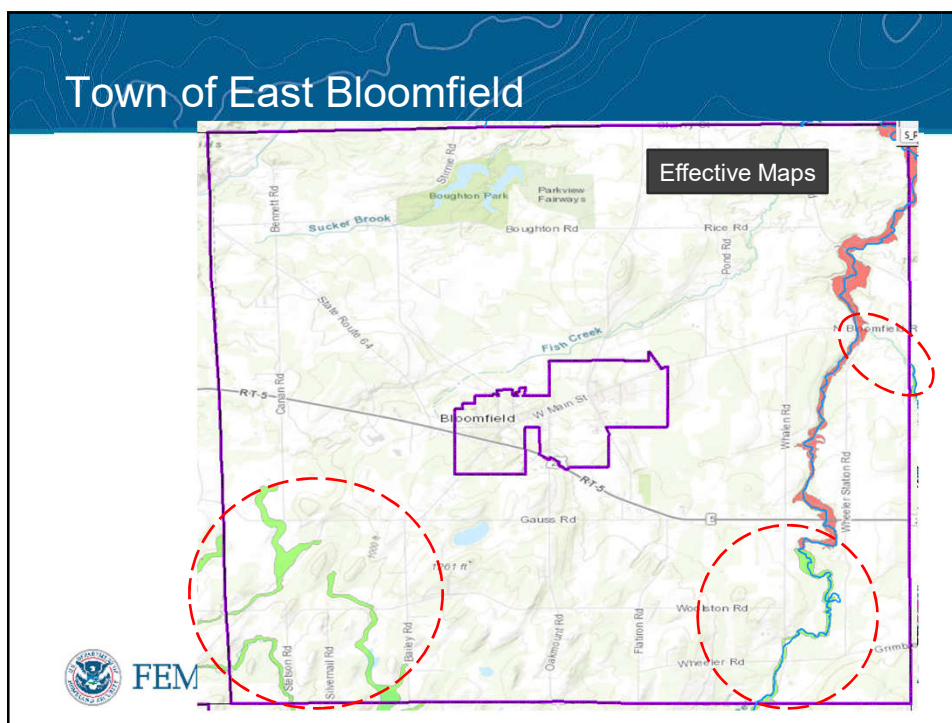
89



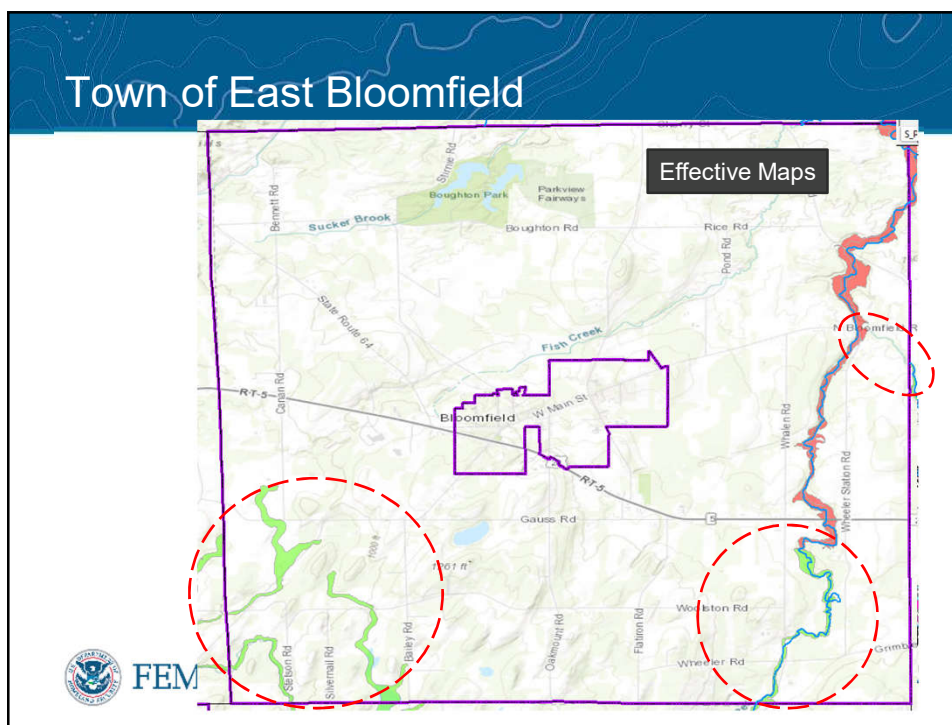
90



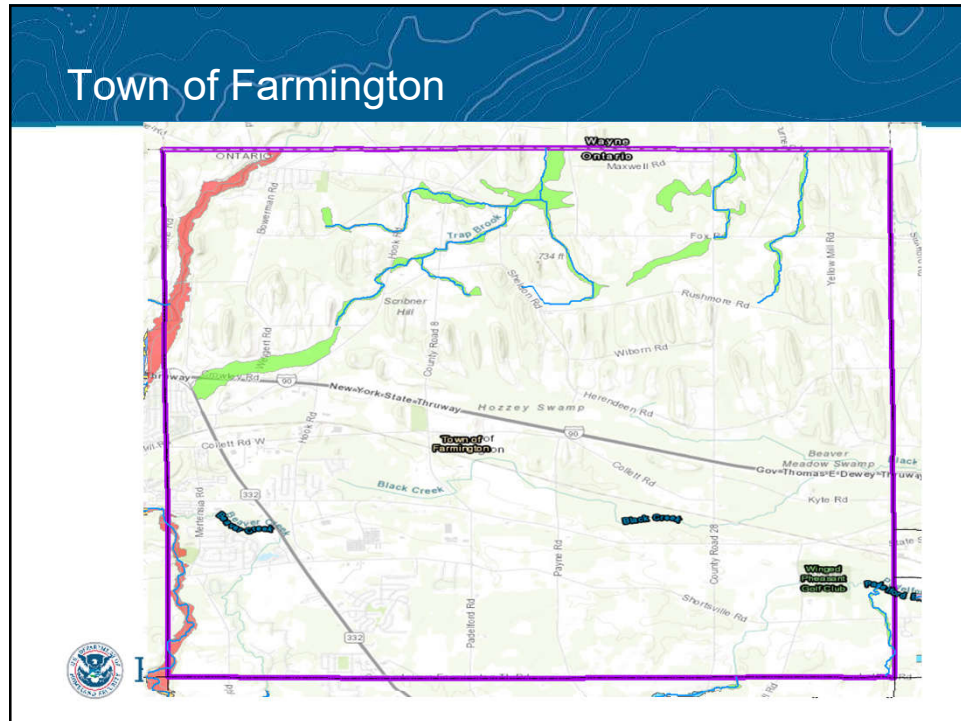
91



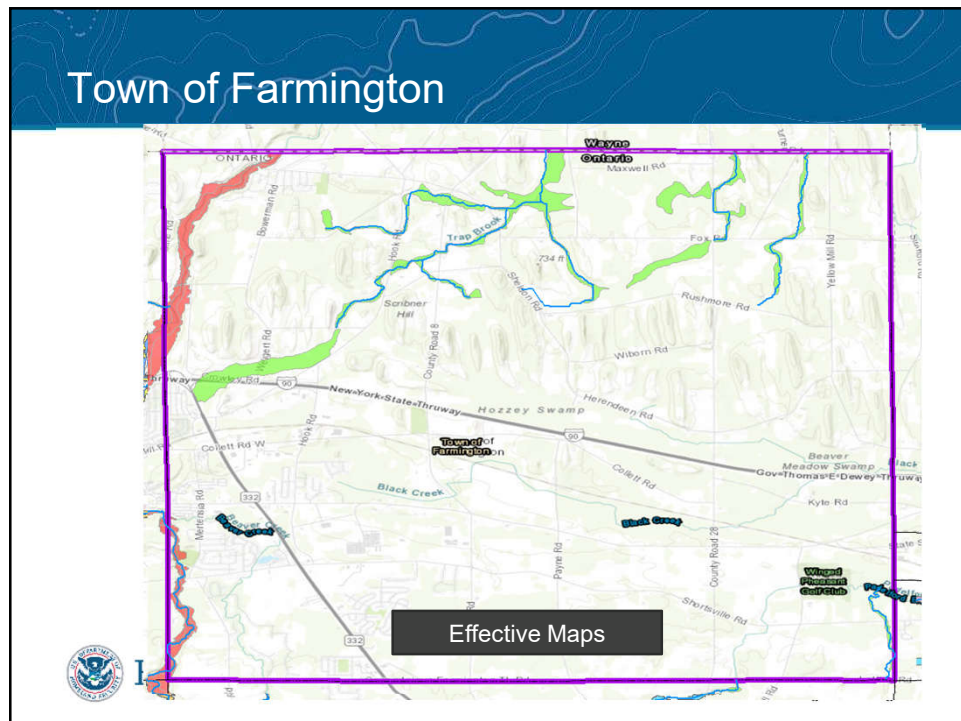
92



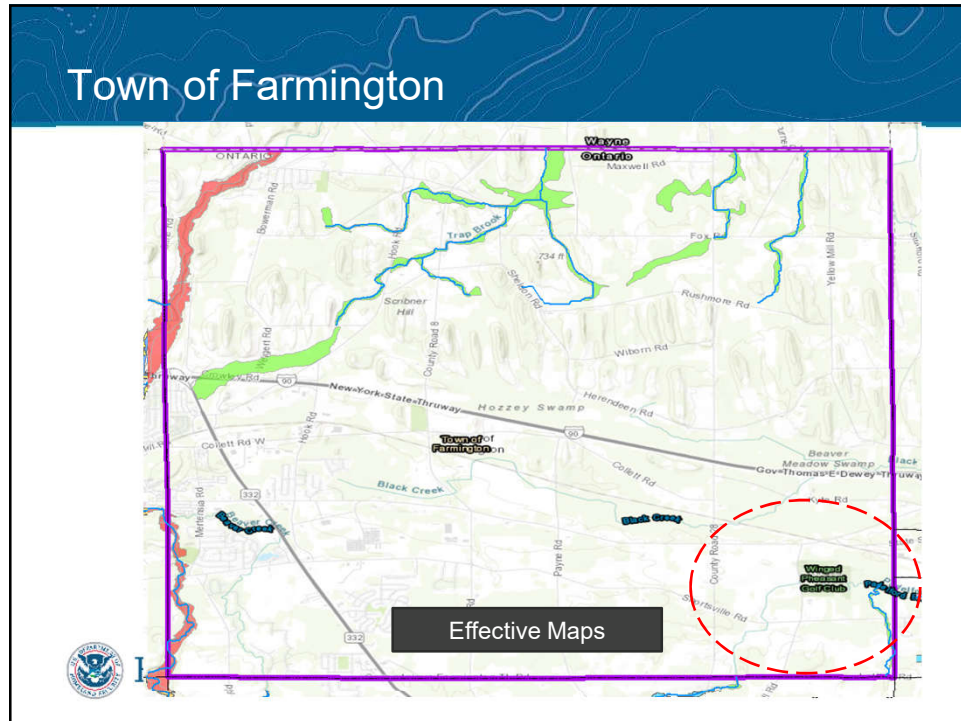
93



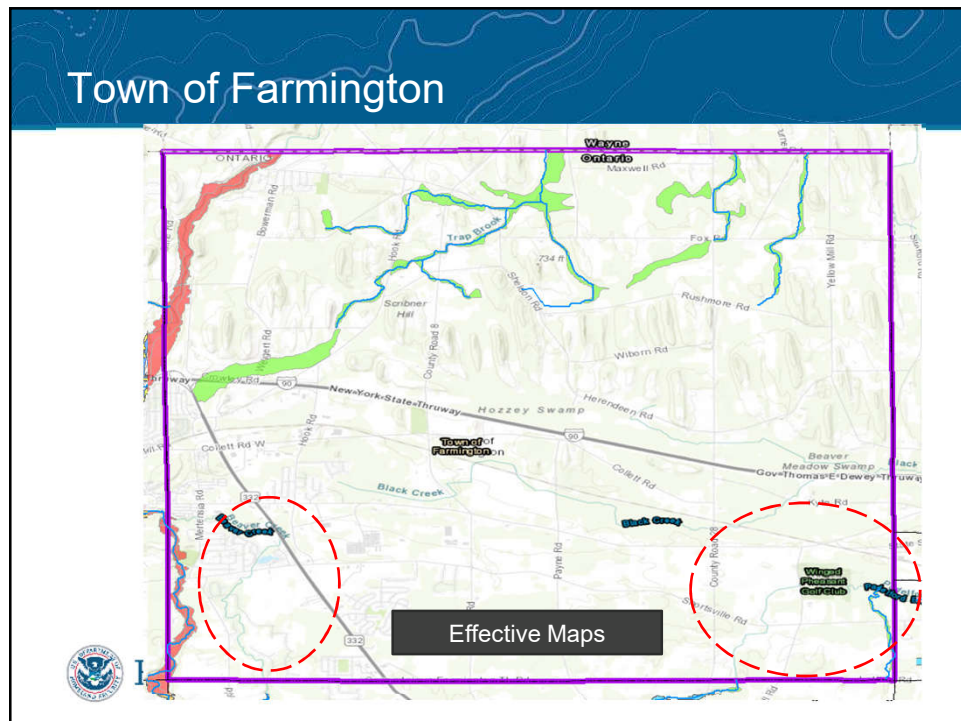
95



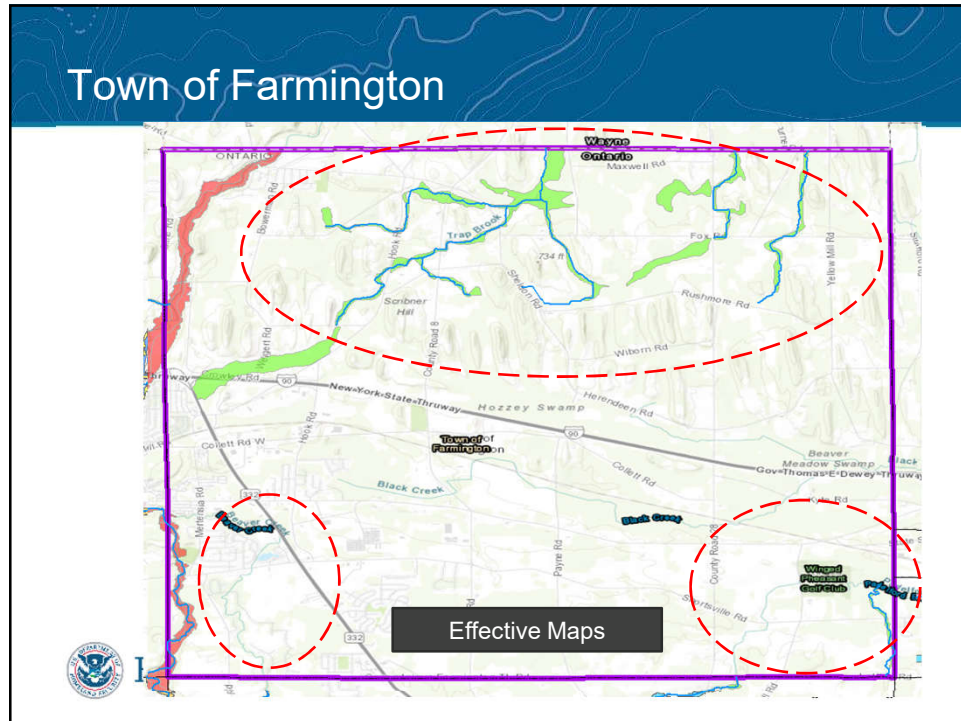
96



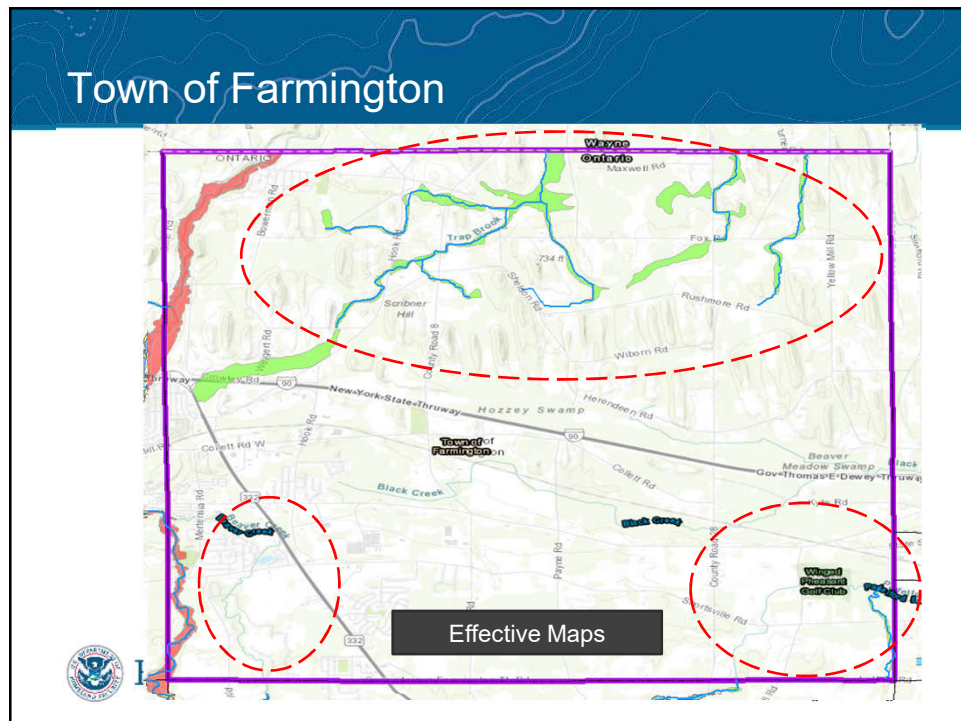
97



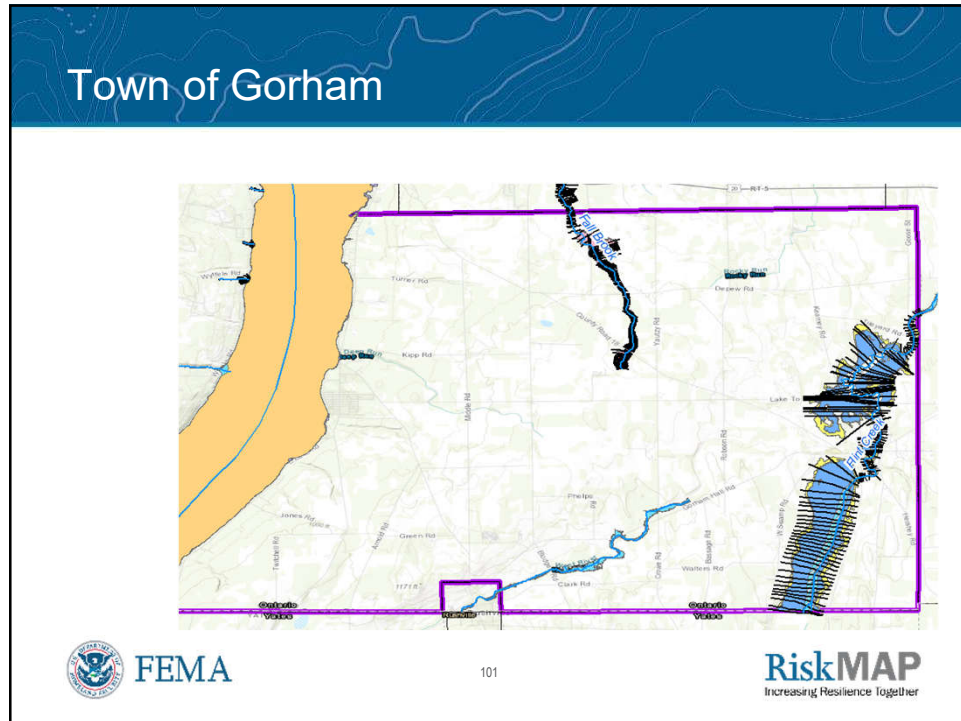
98



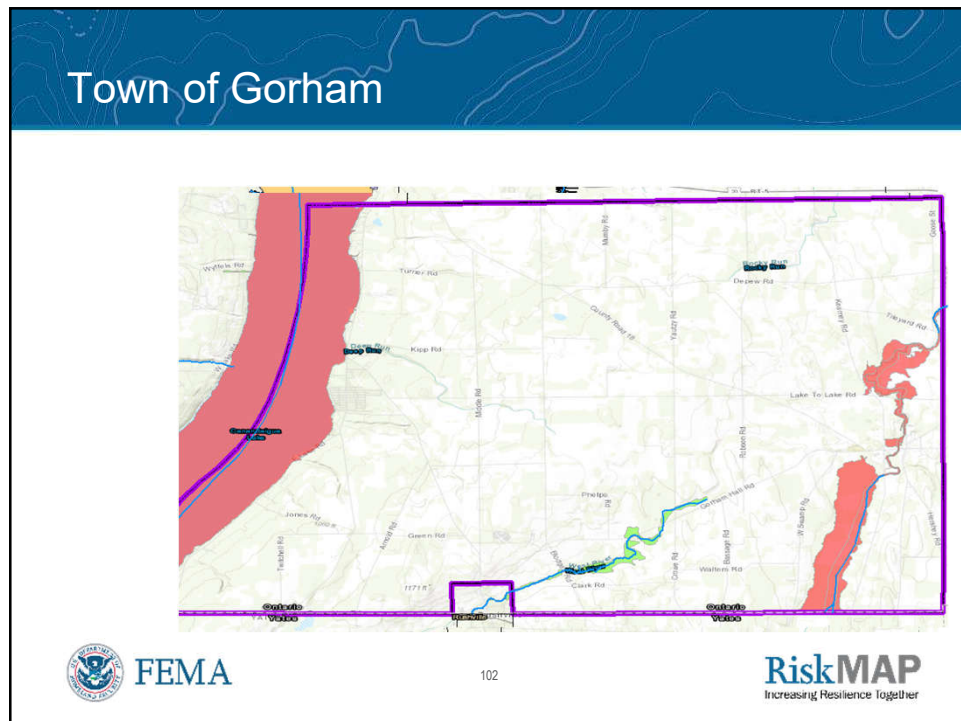
99



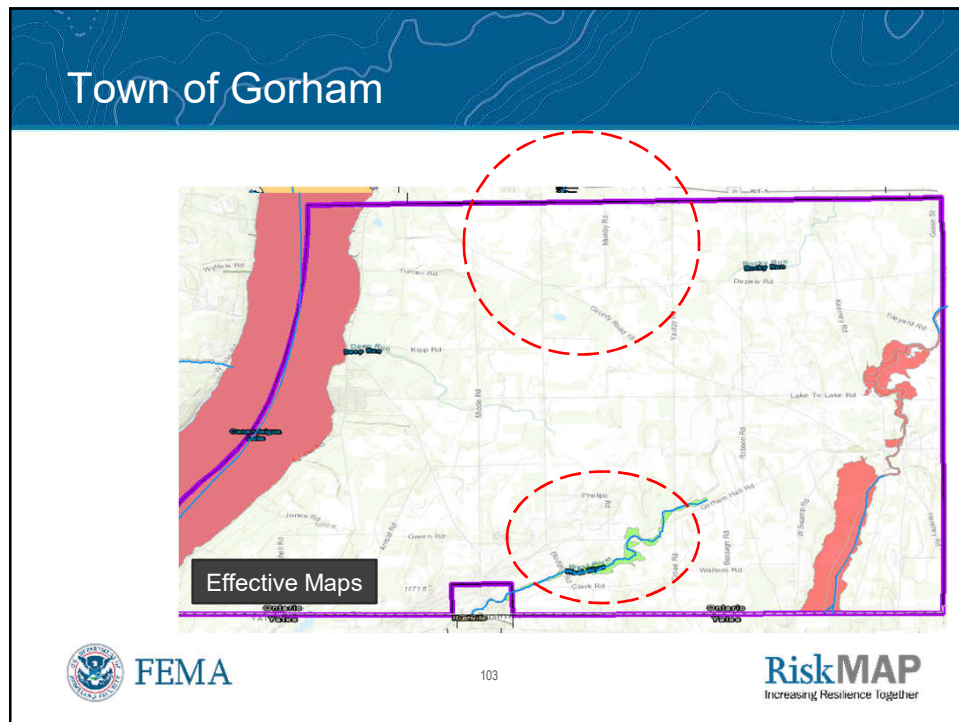
100



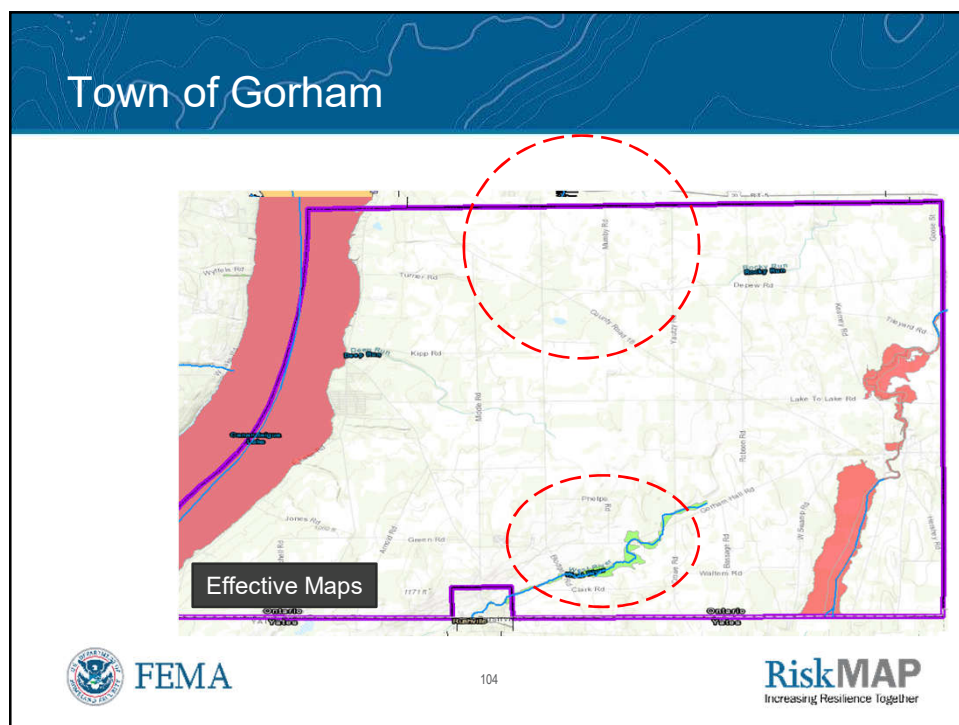
101



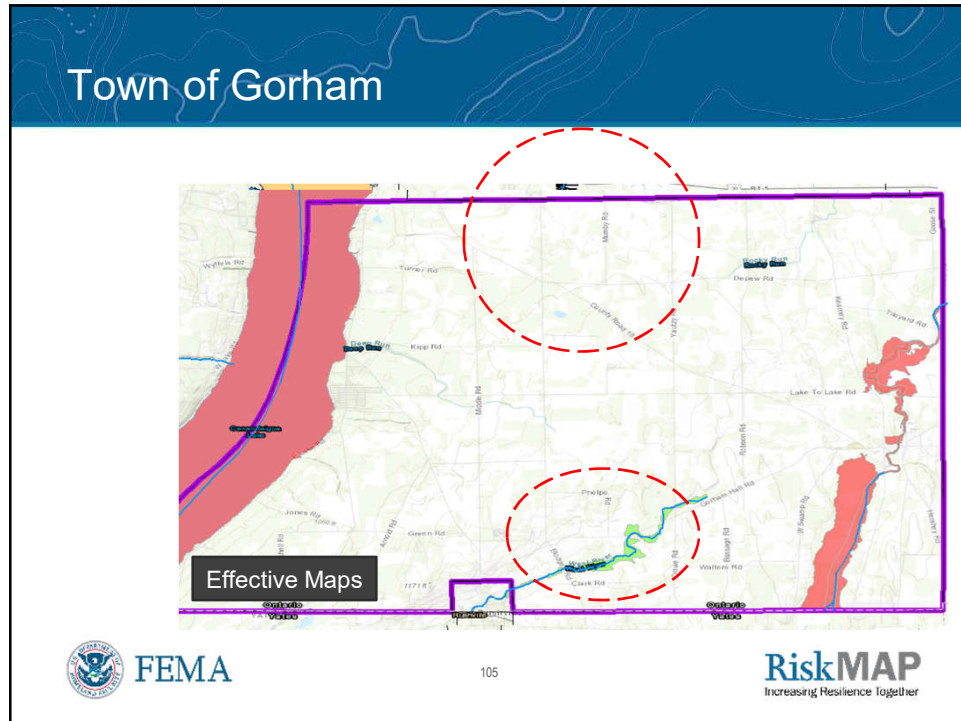
102



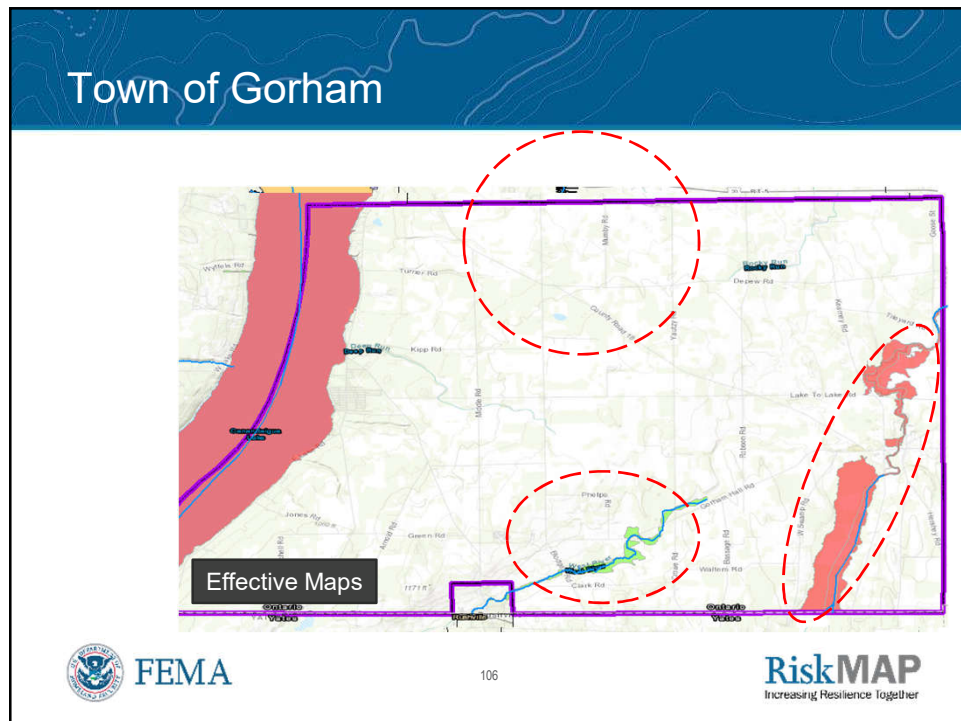
103



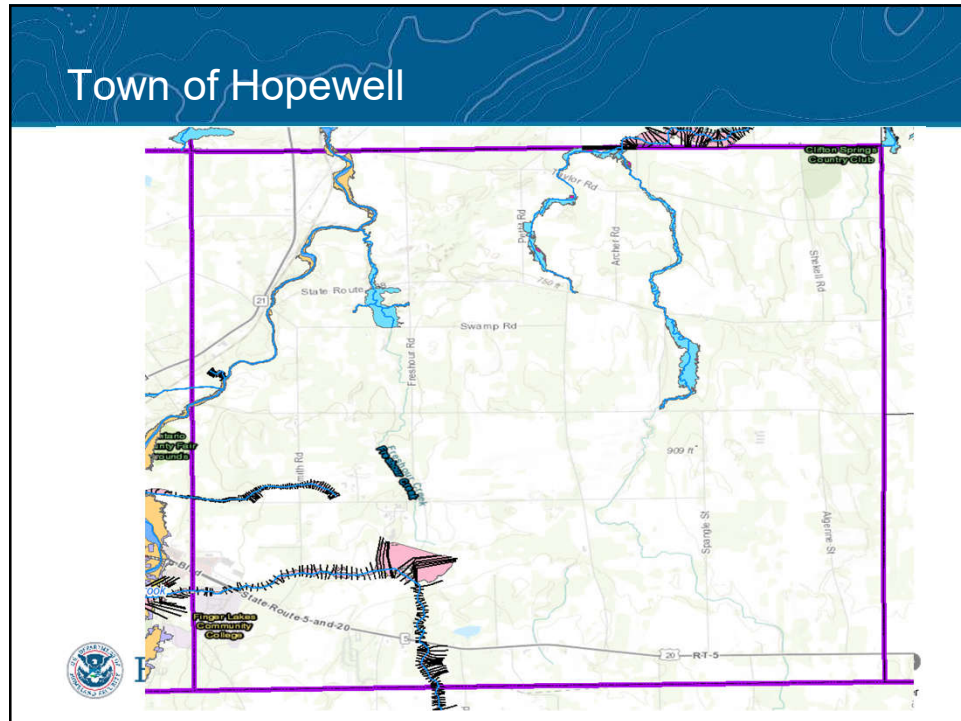
104



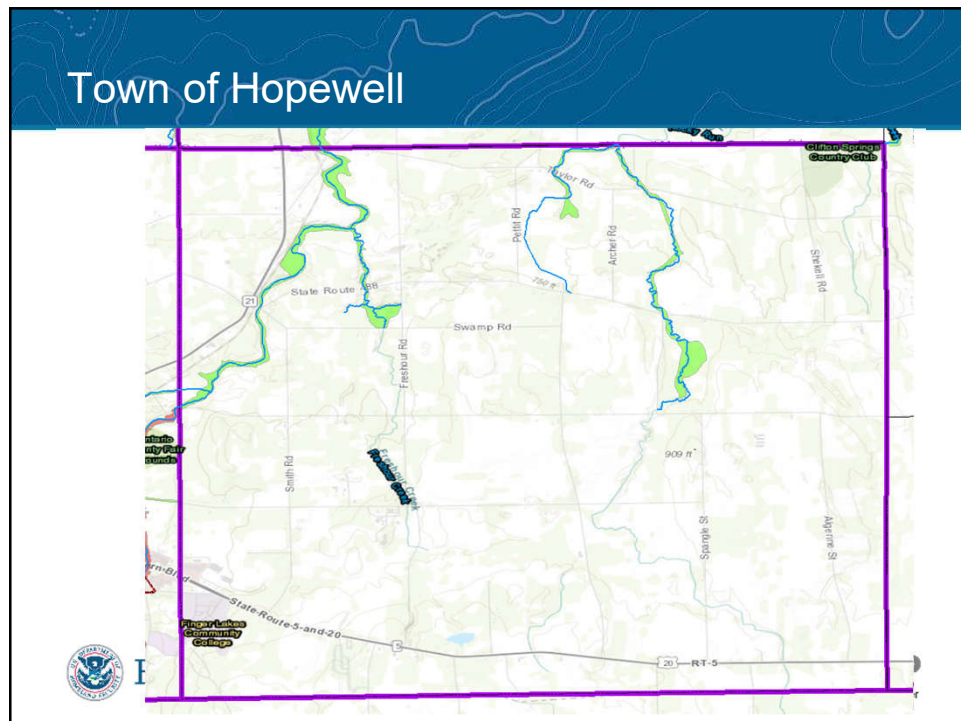
105



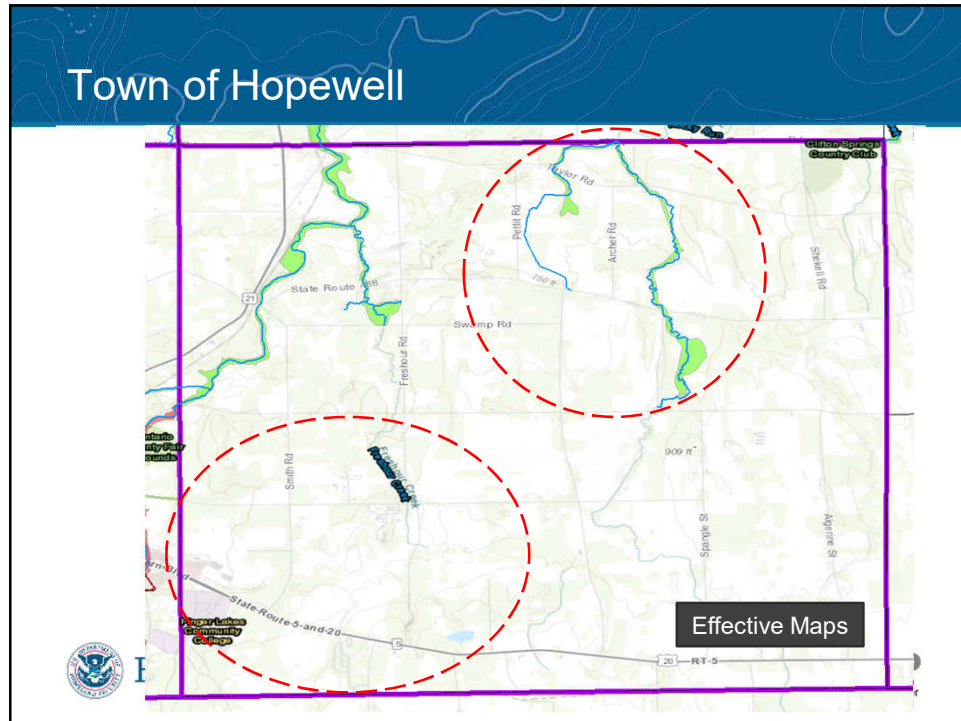
106



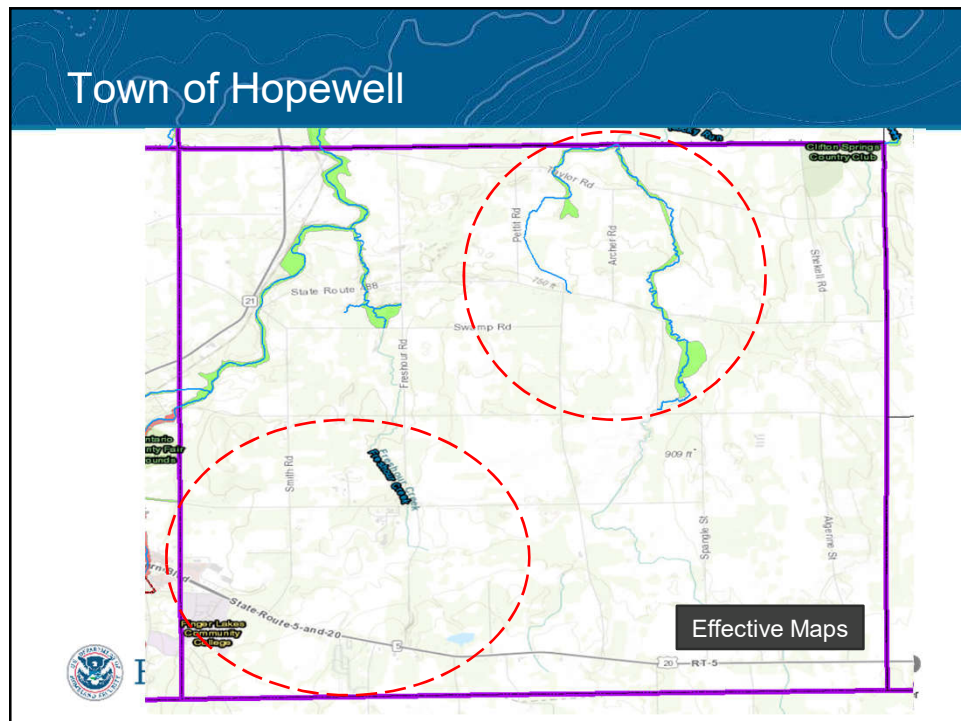
107



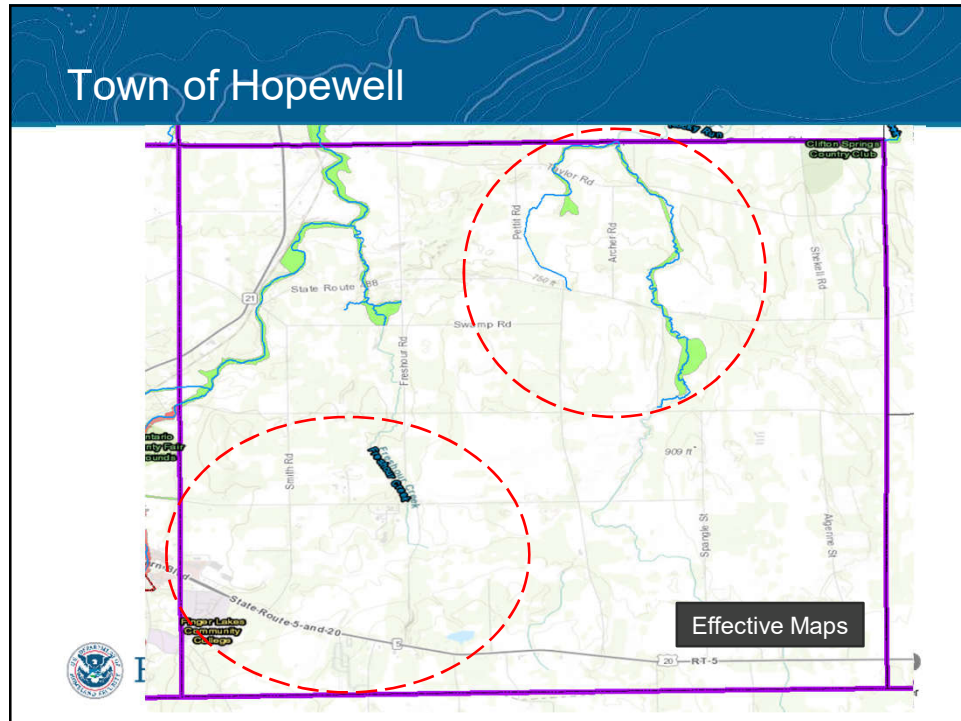
108



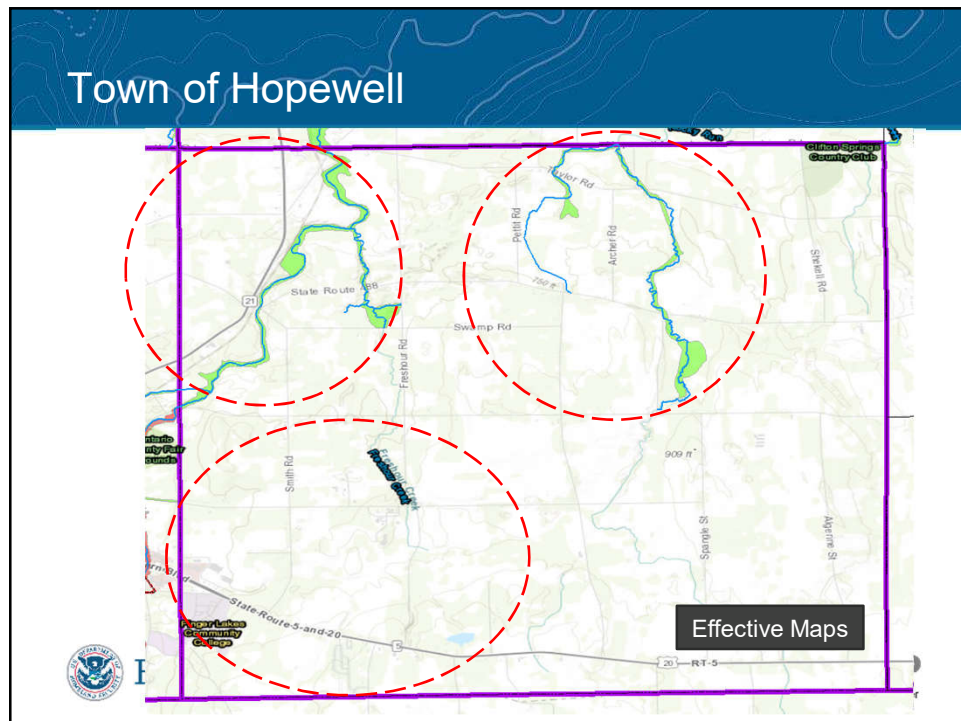
109



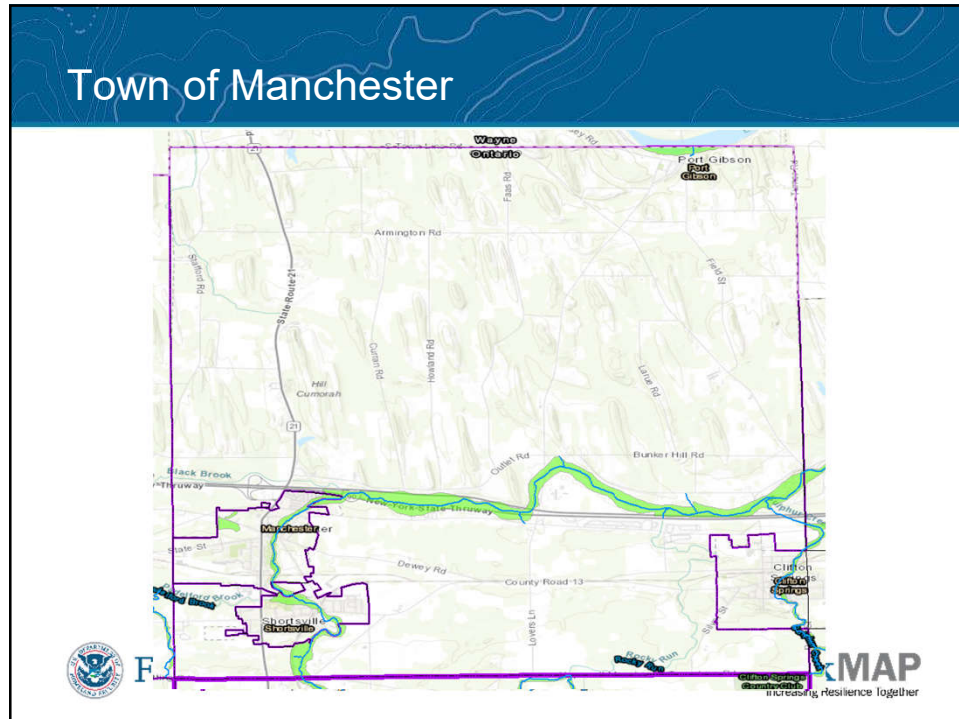
110



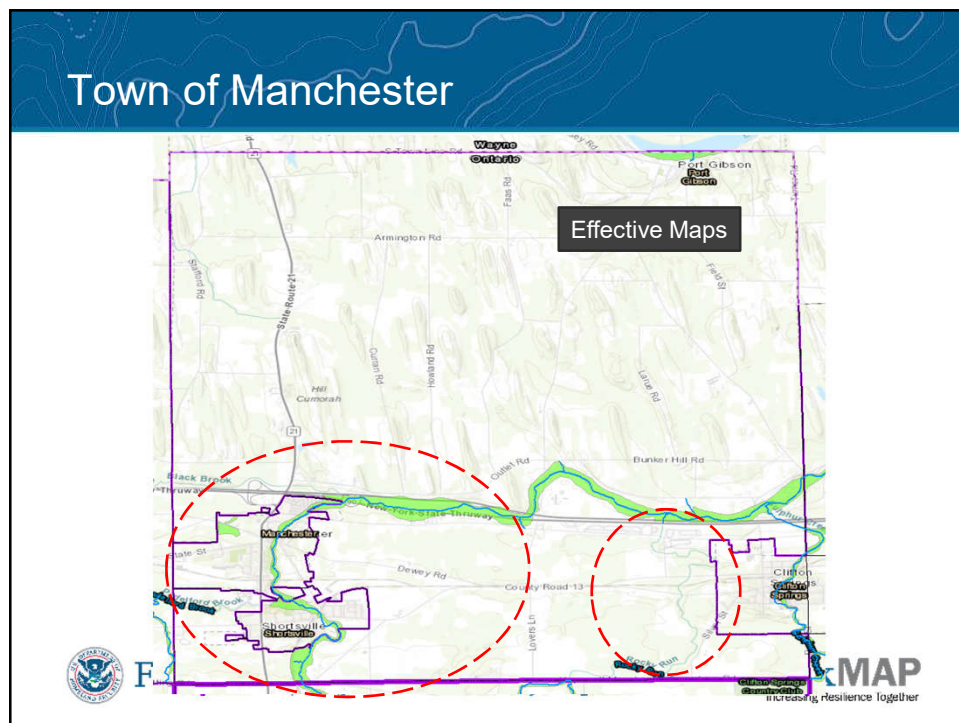
111



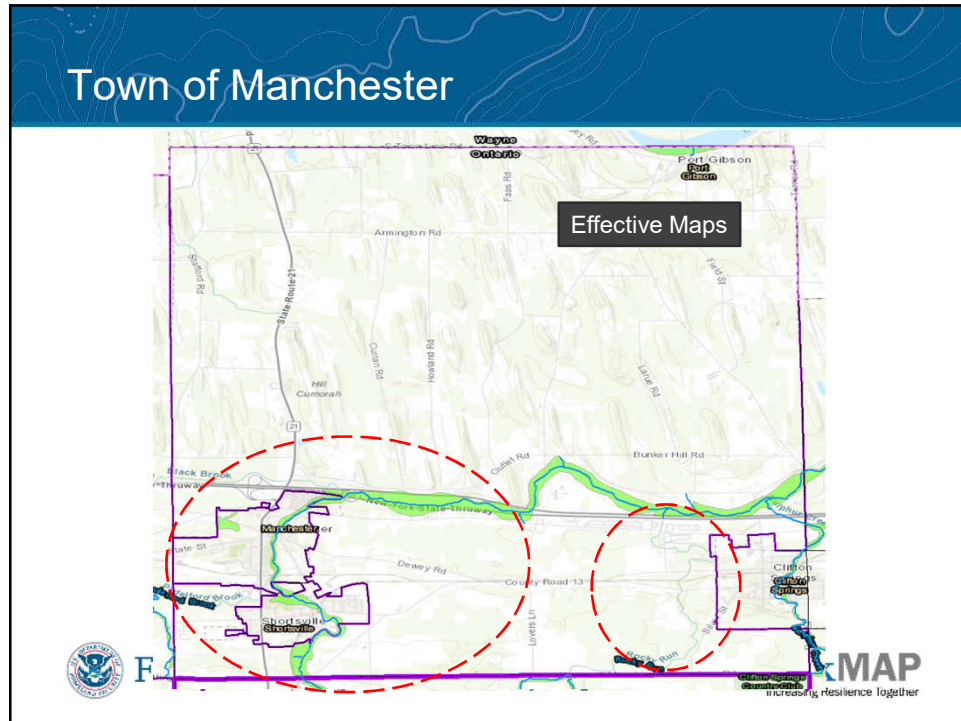
112



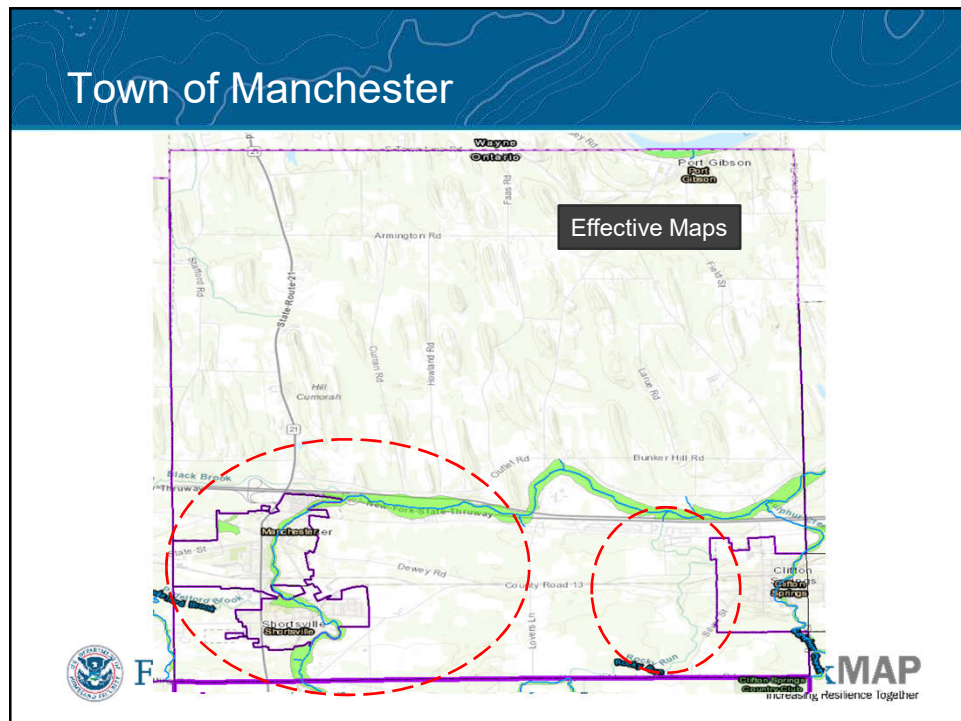
114



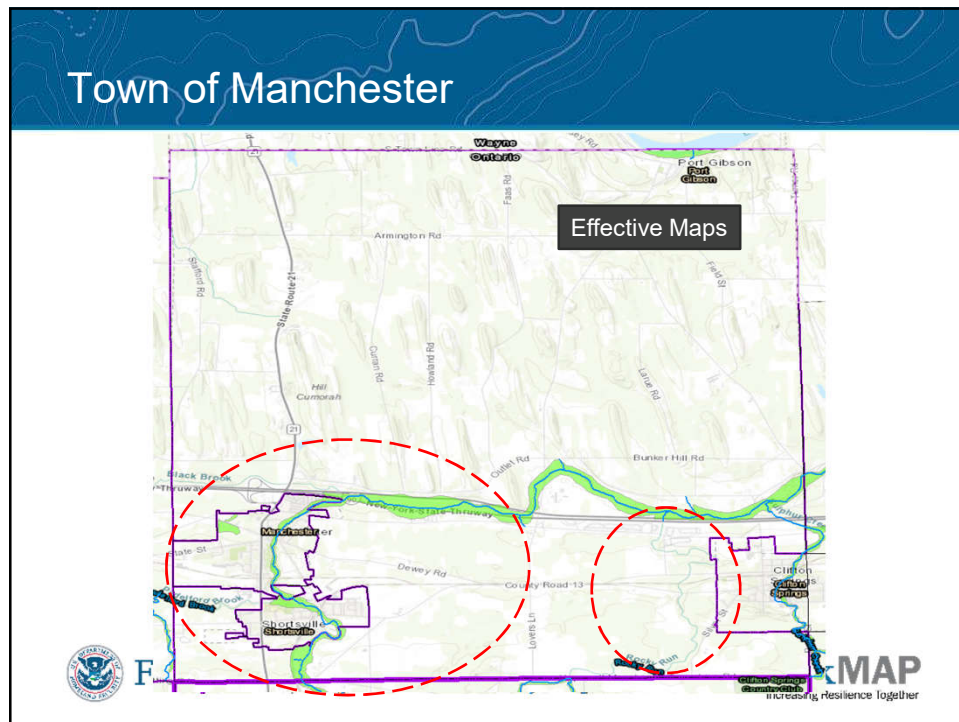
115



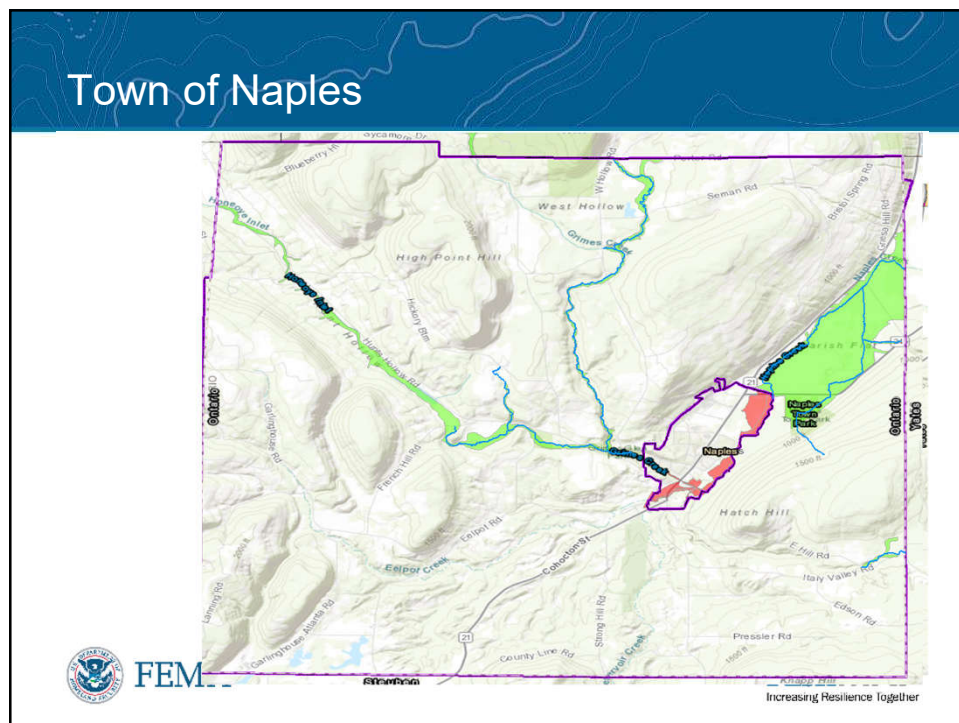
116



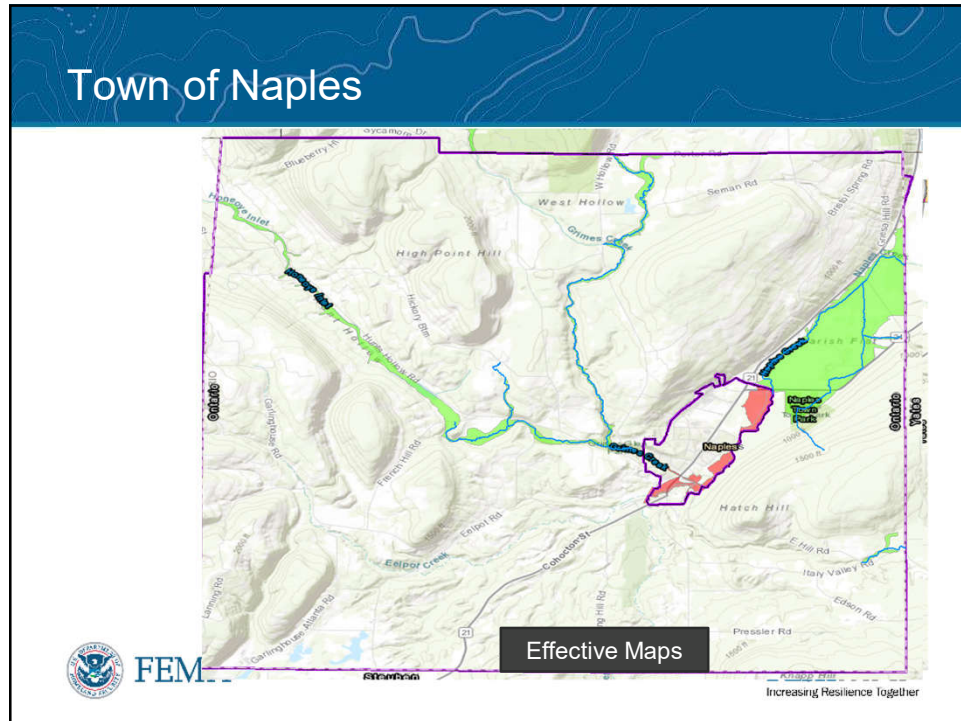
117



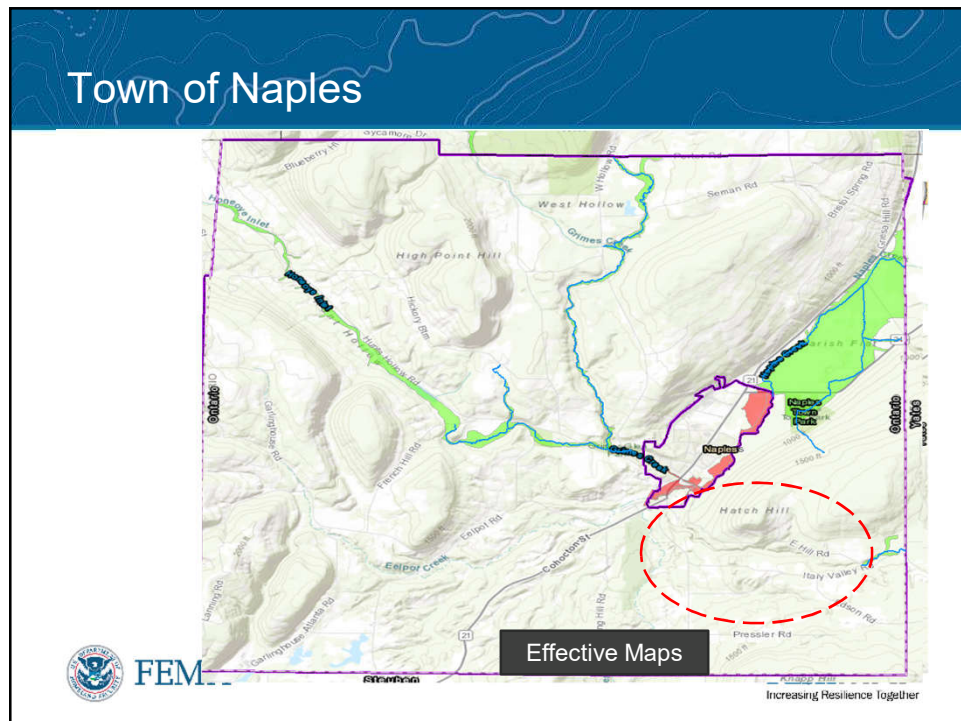
118



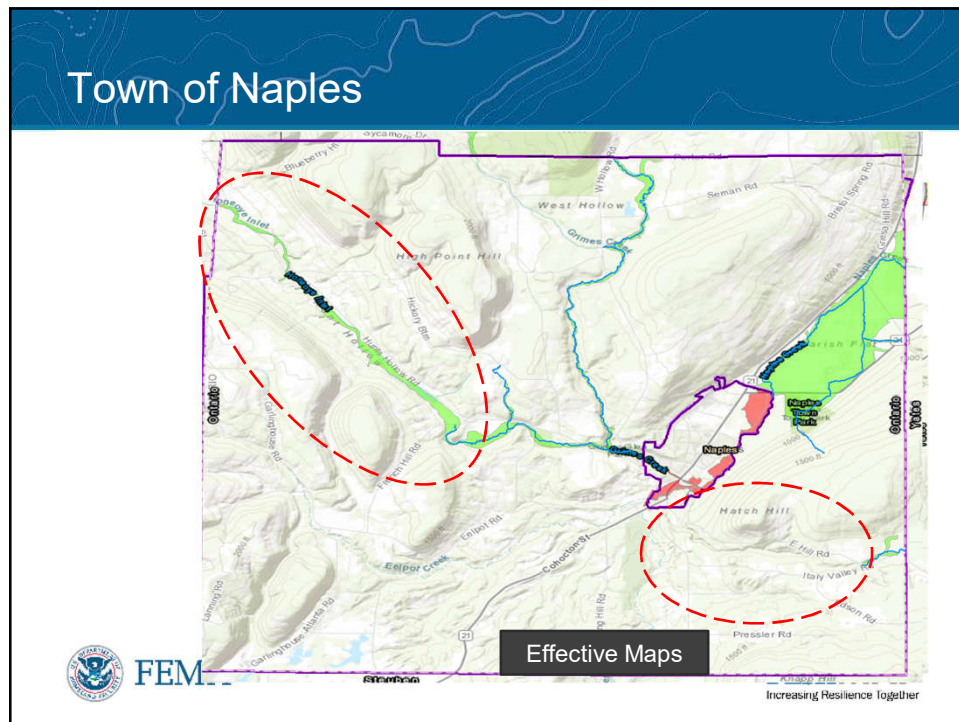
120



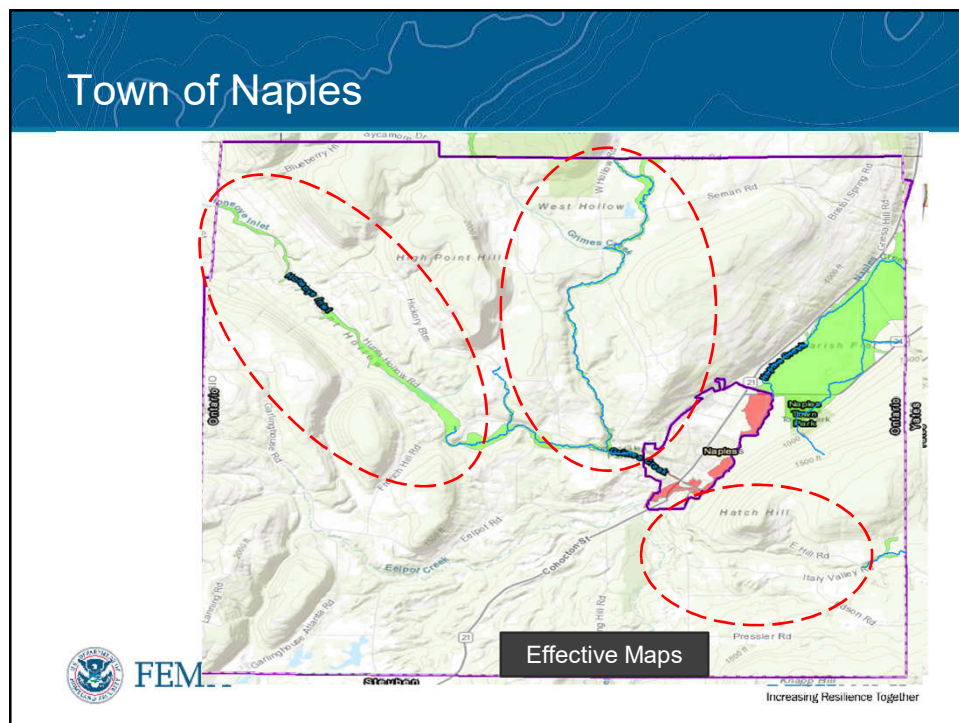
121



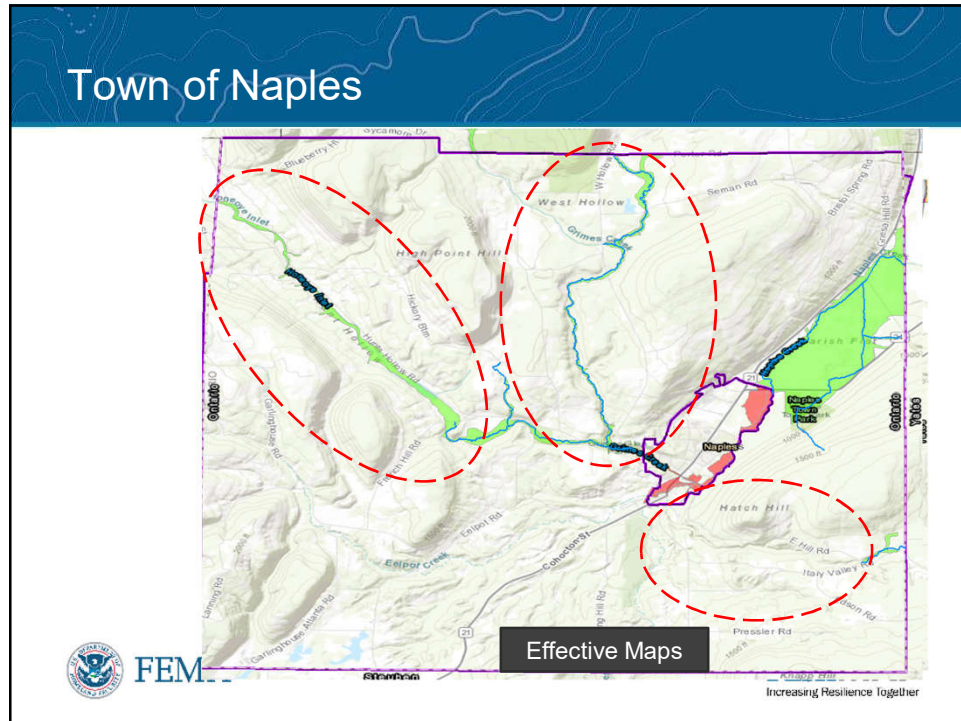
122



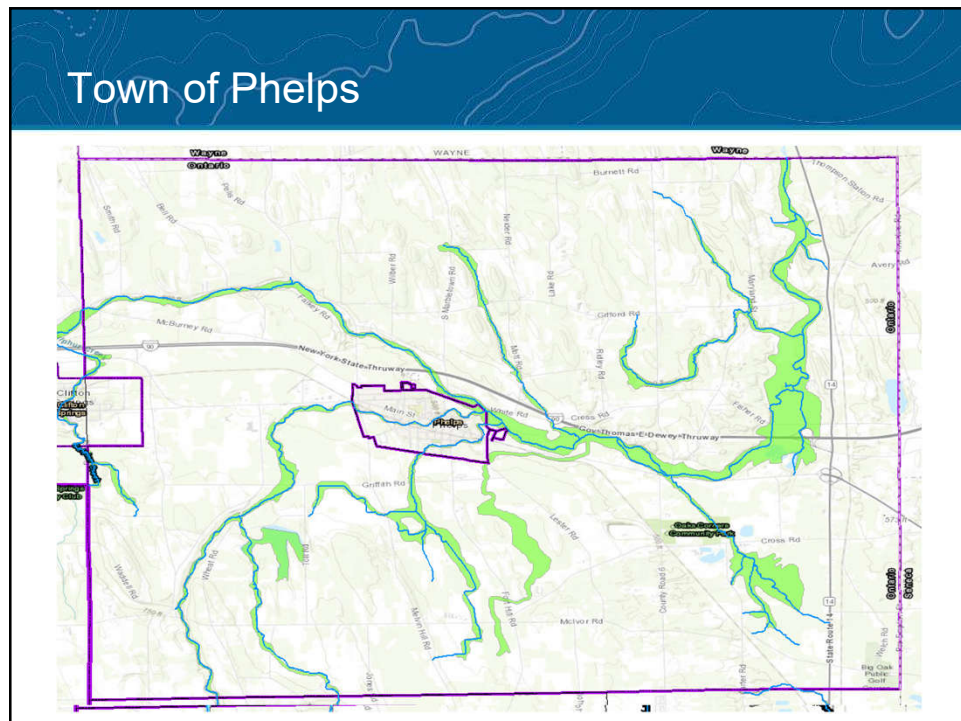
123



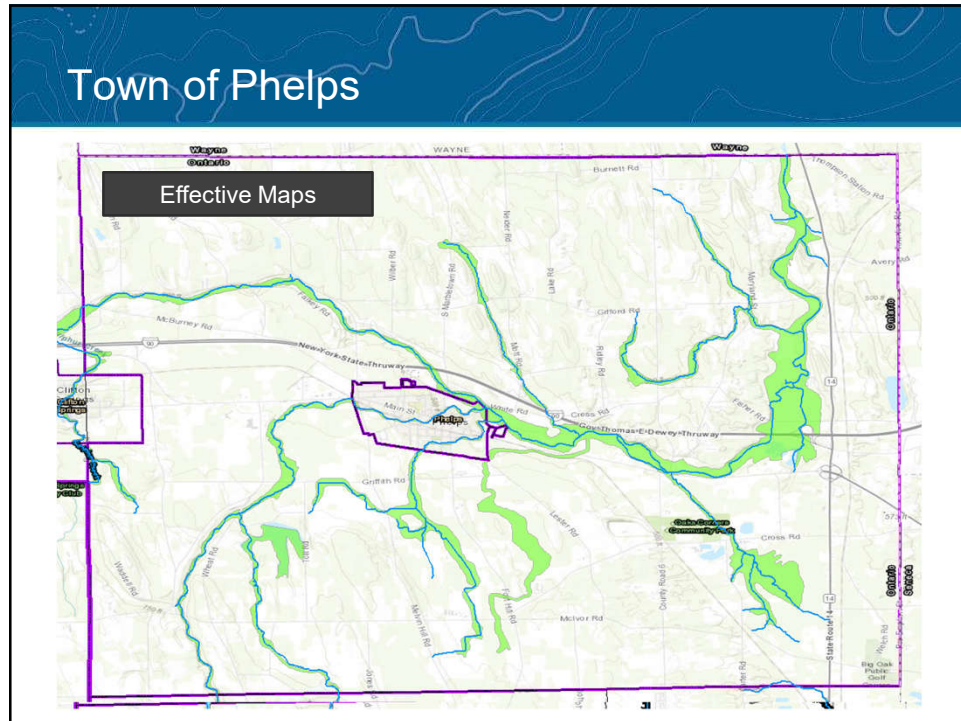
124



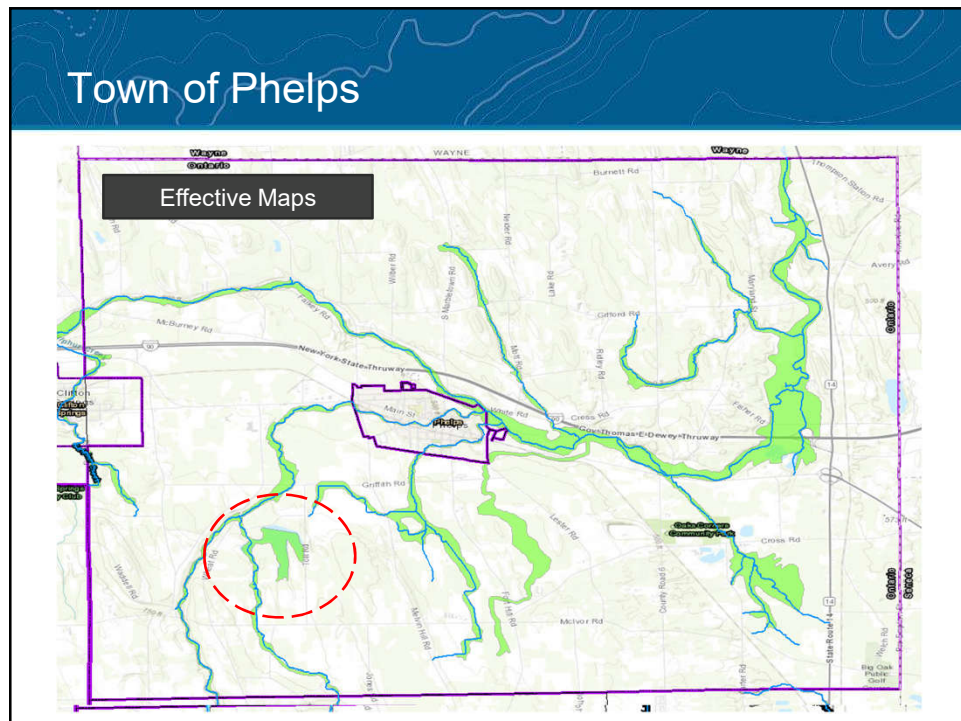
125



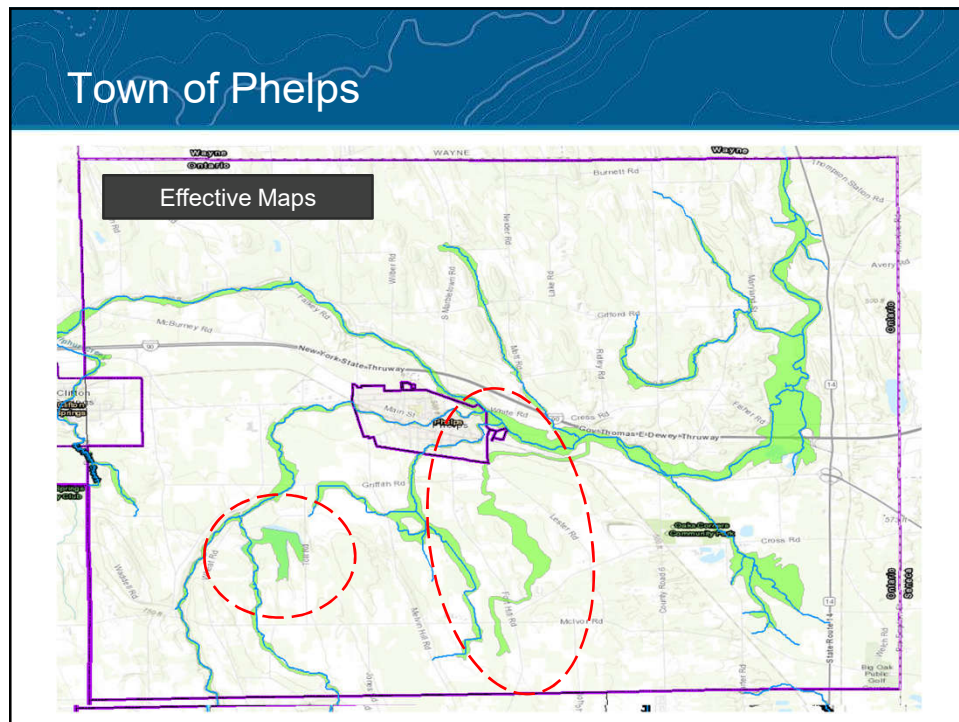
127



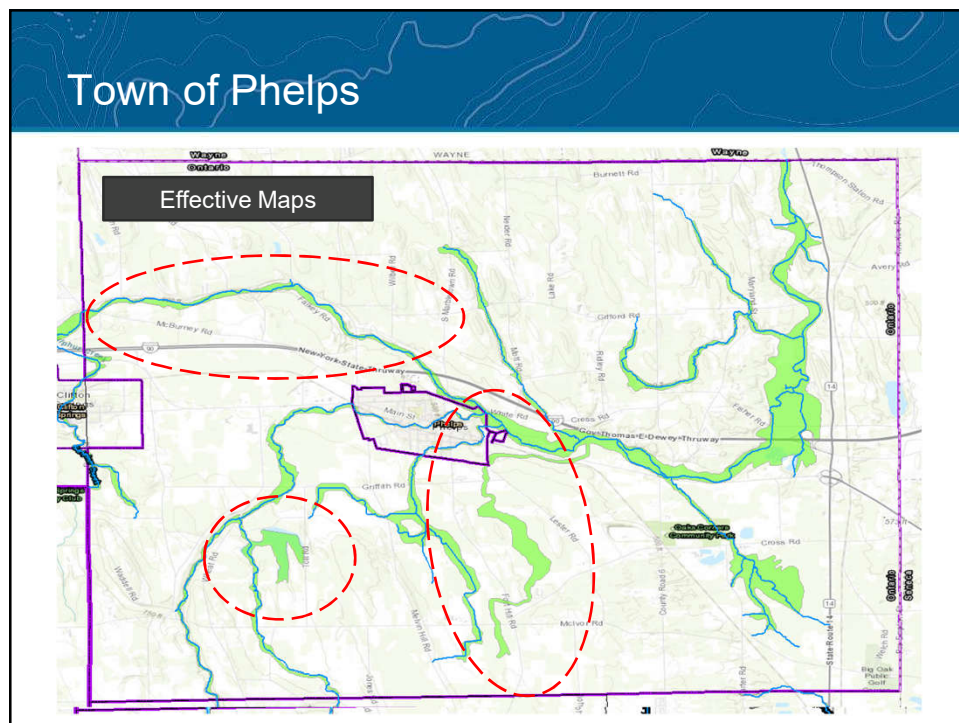
128



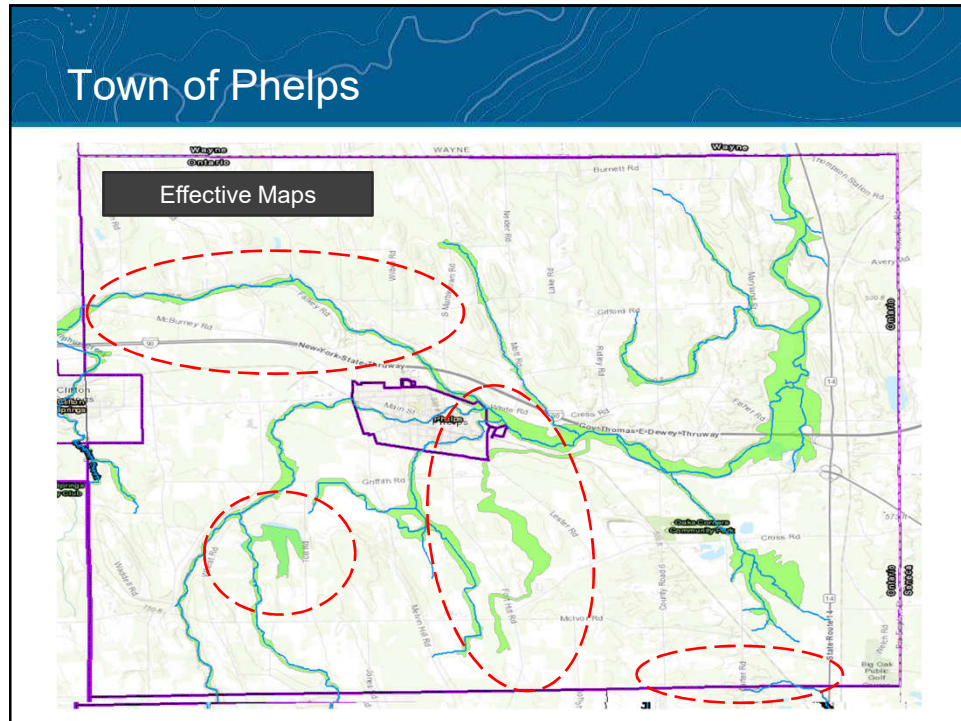
129



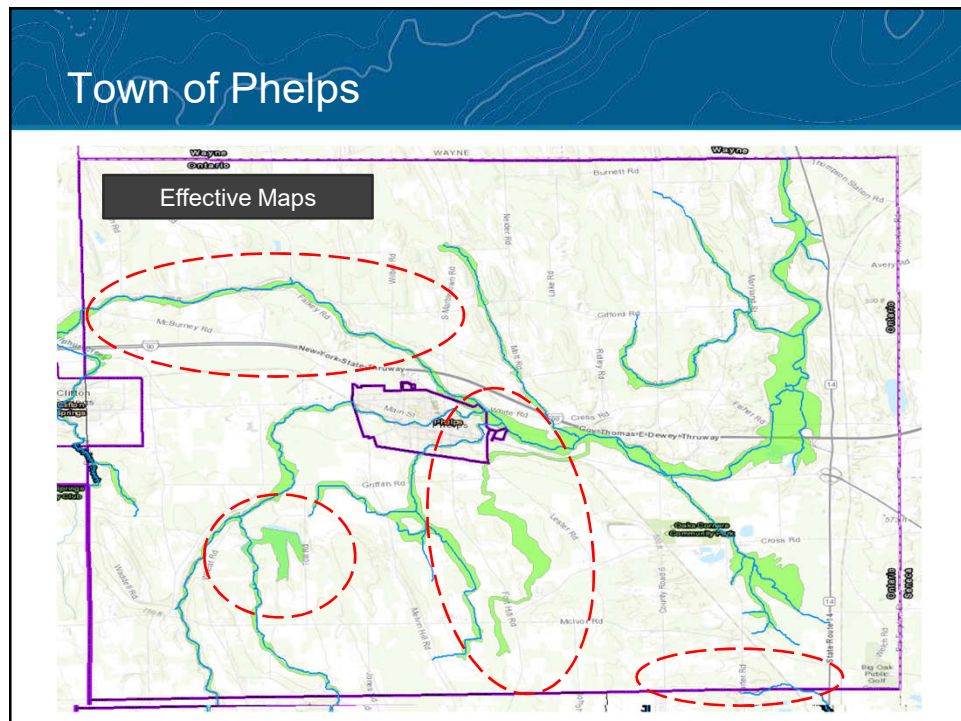
130



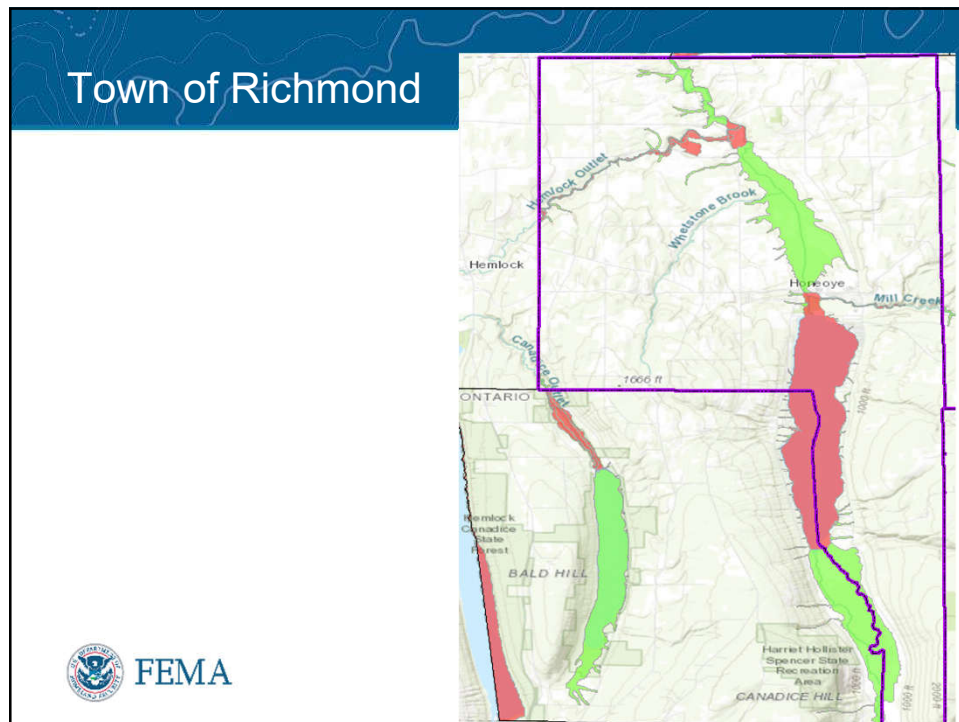
131



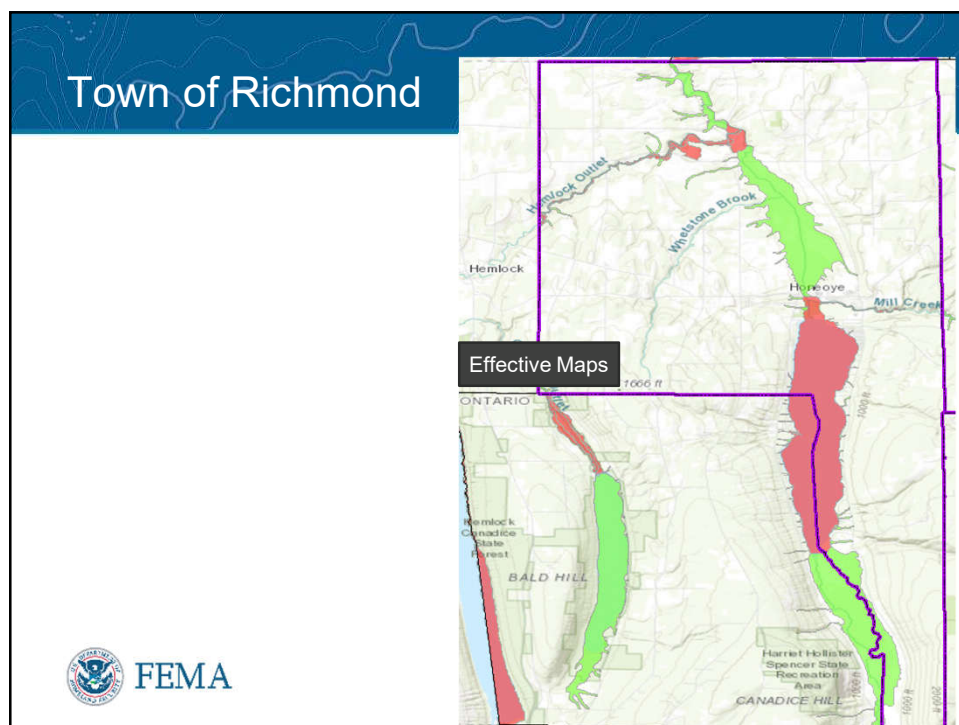
132



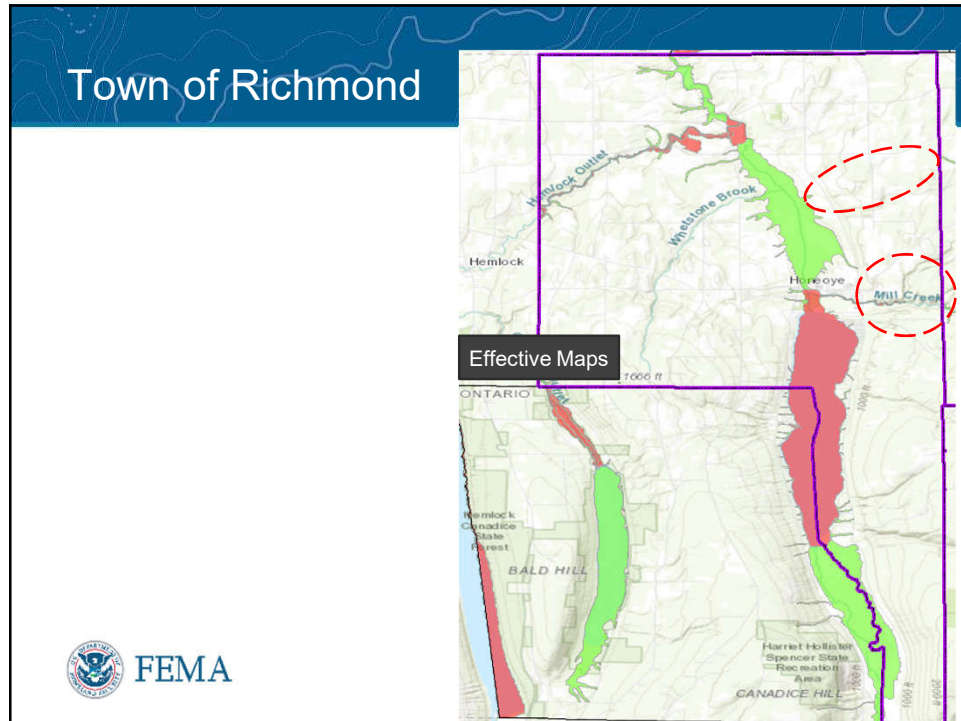
133



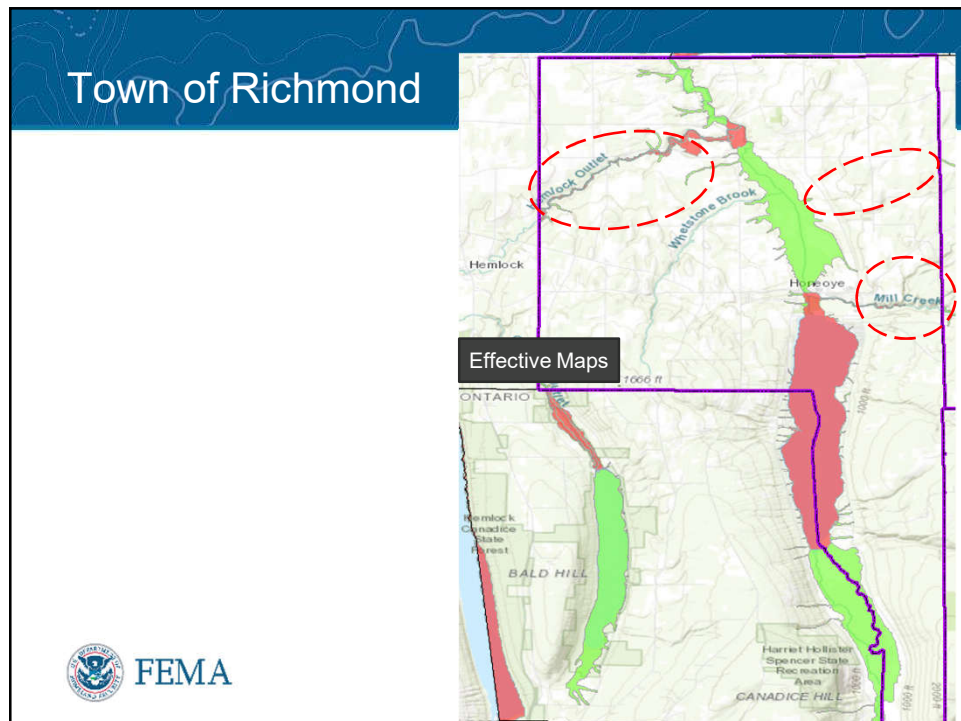
135



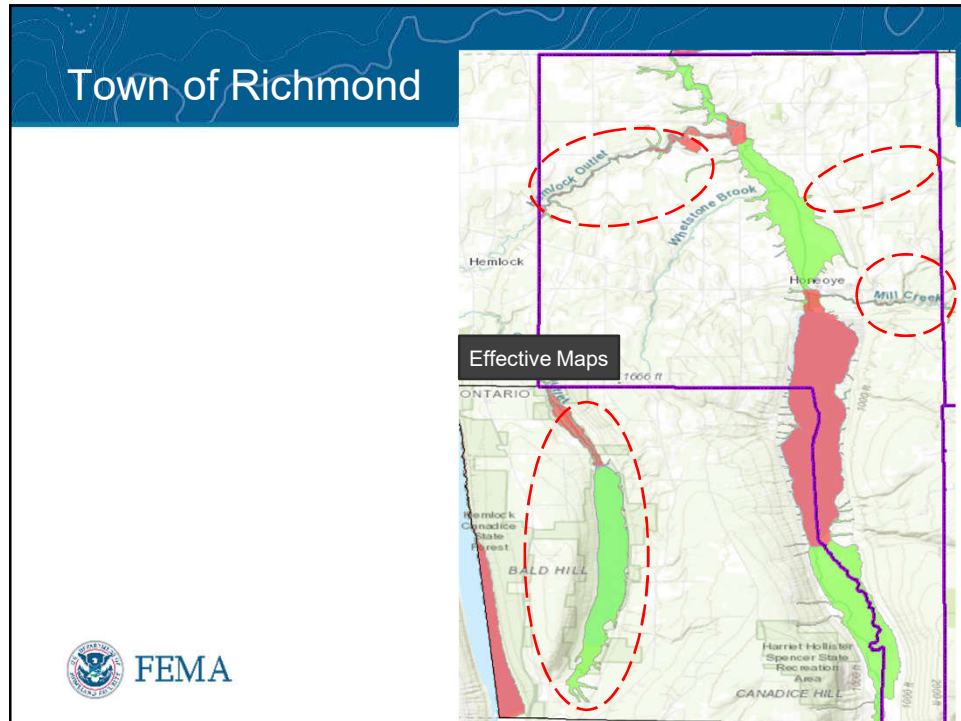
136



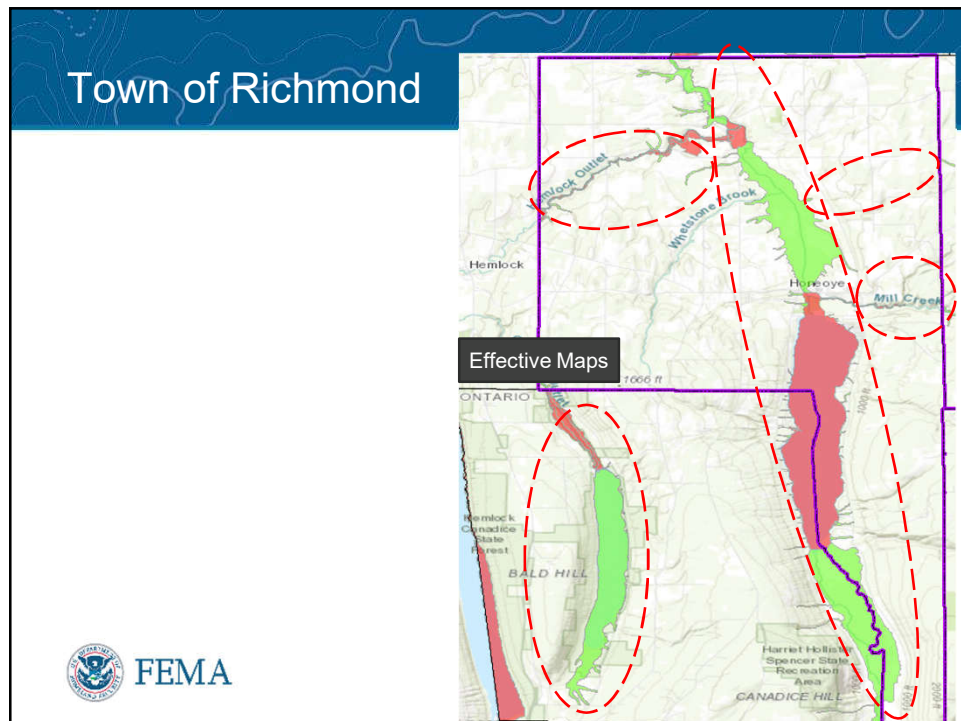
137



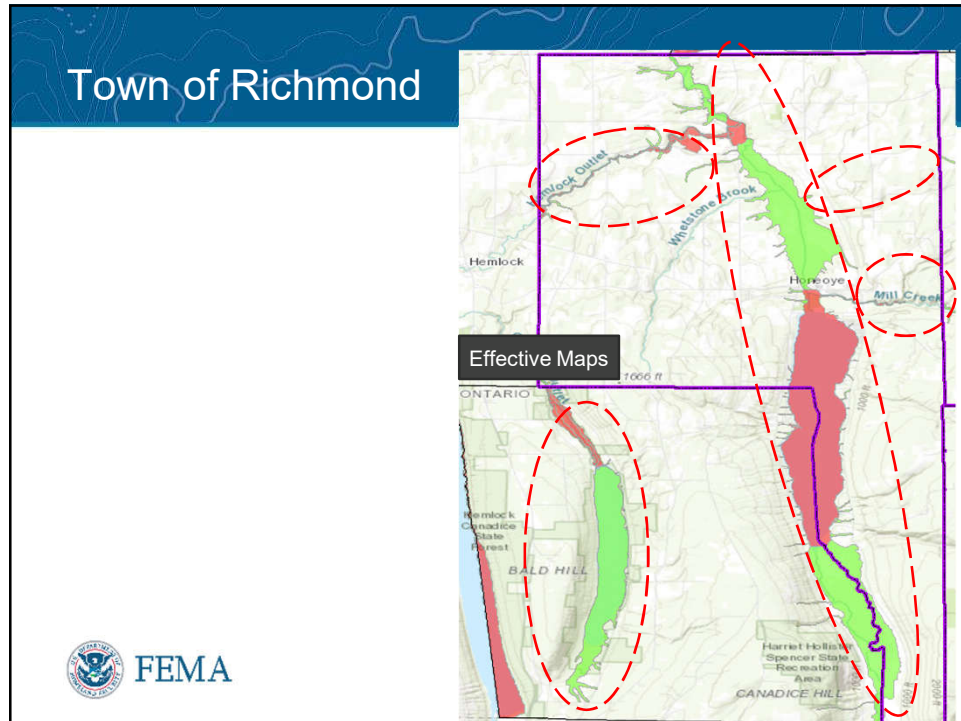
138



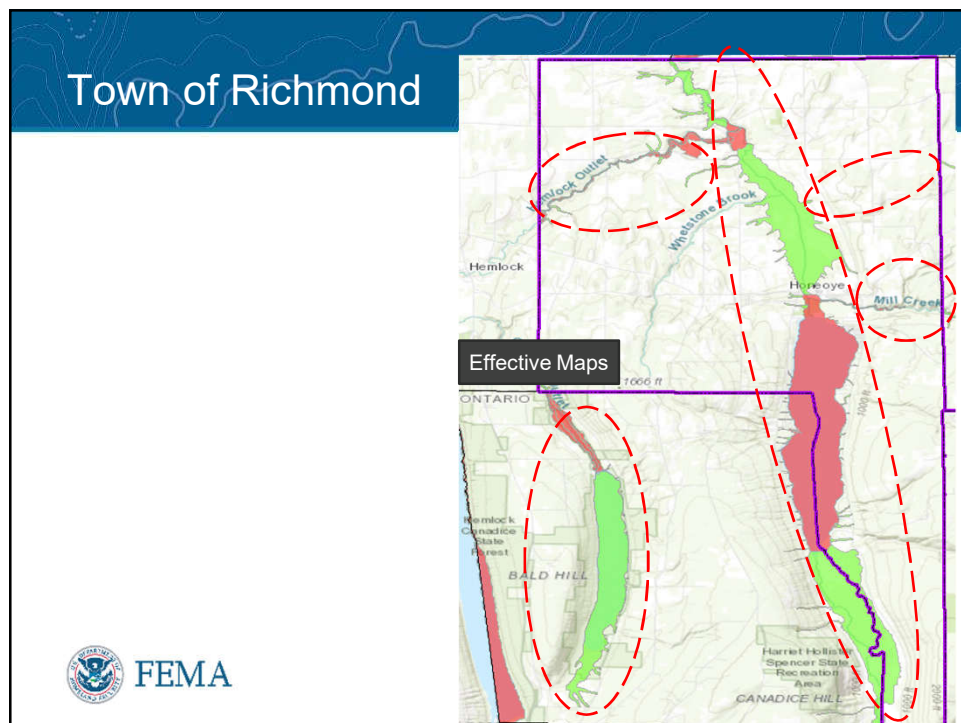
139



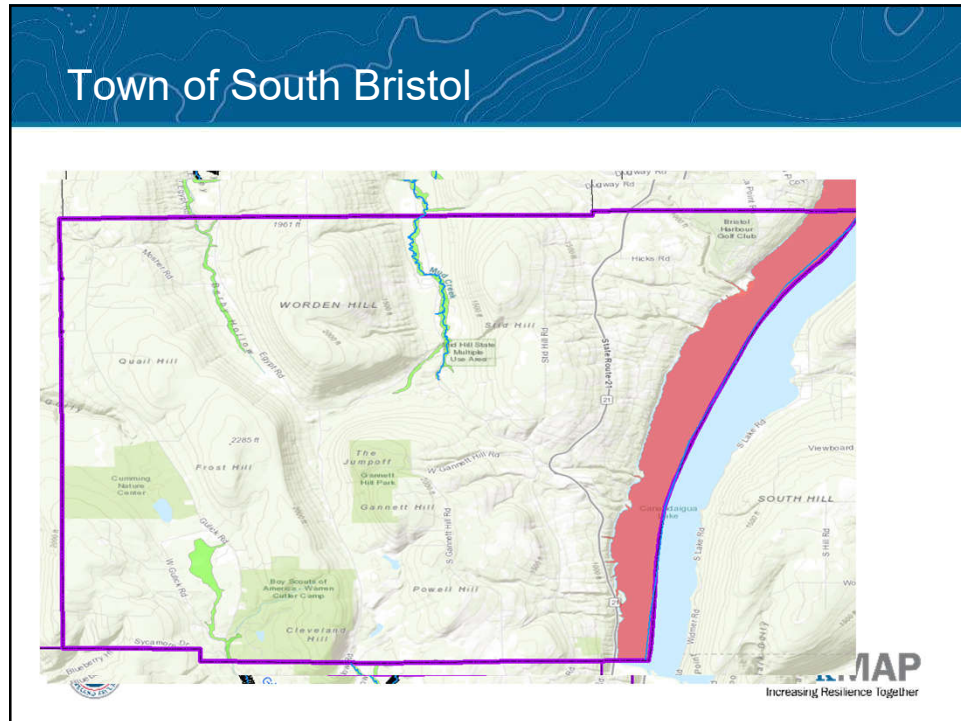
140



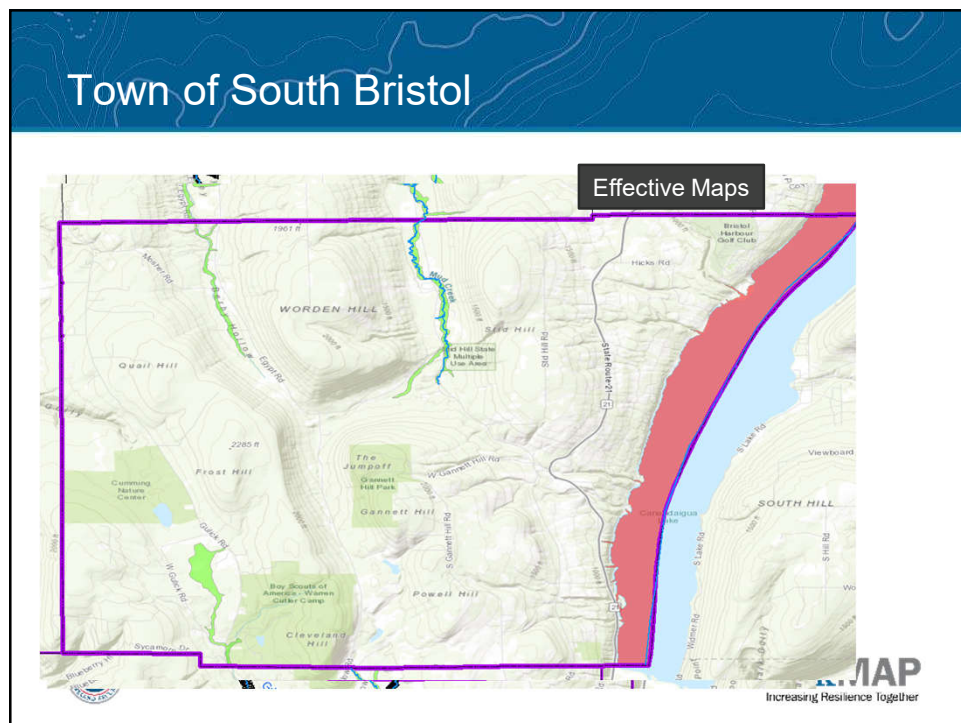
141



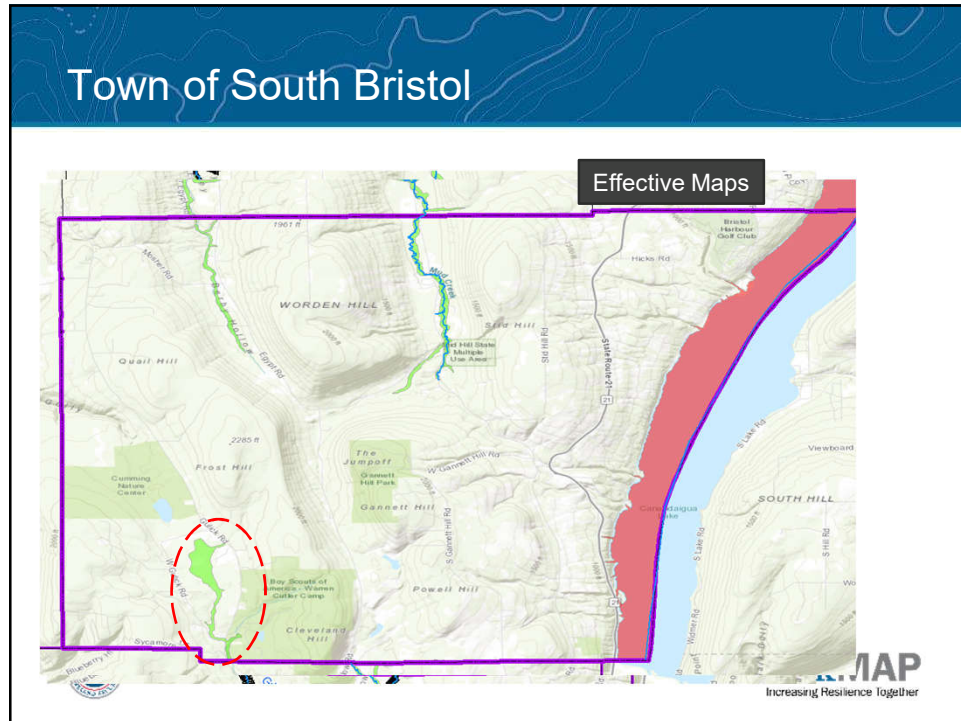
142



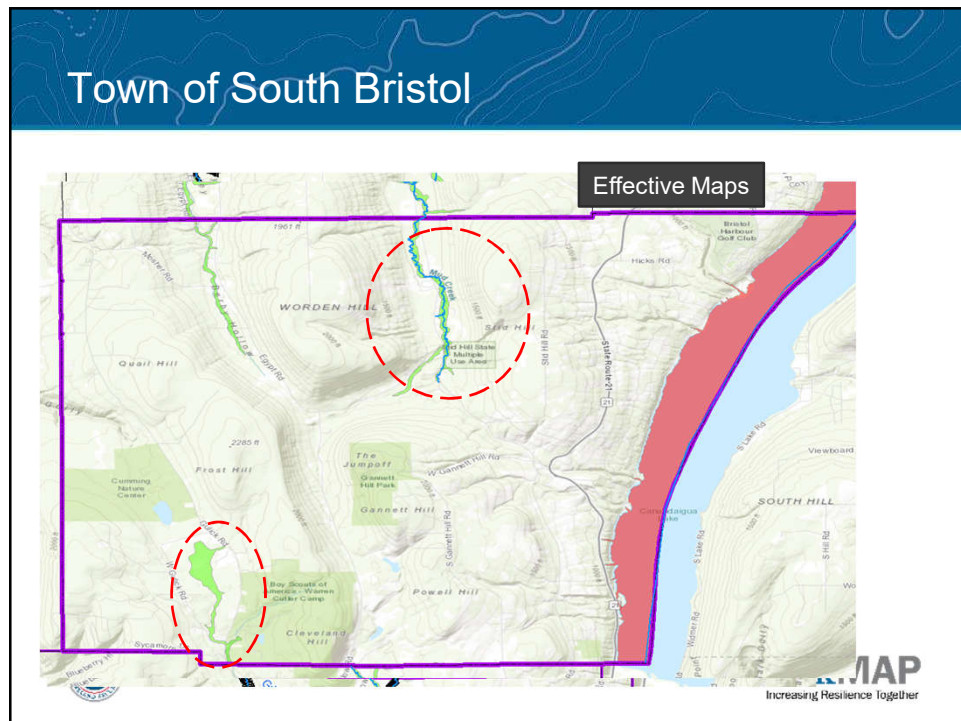
144



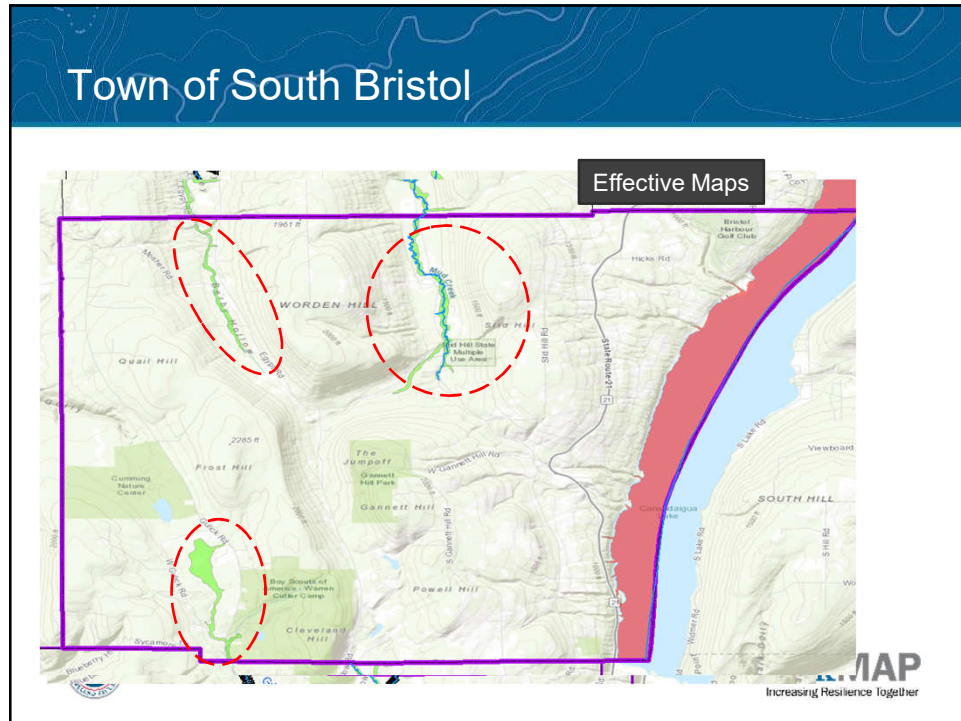
145



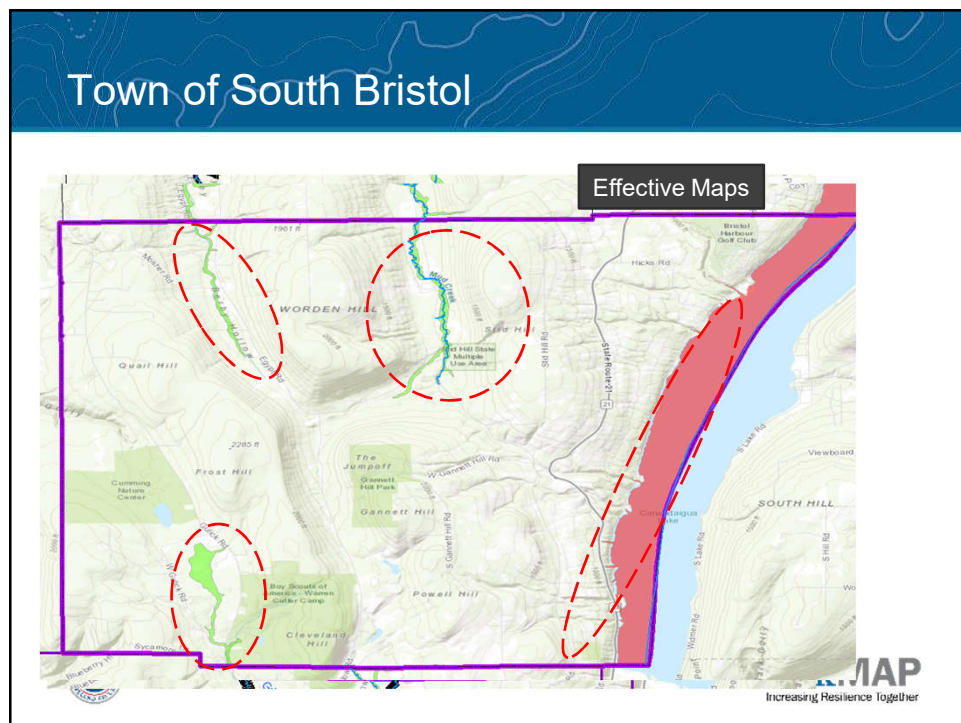
146



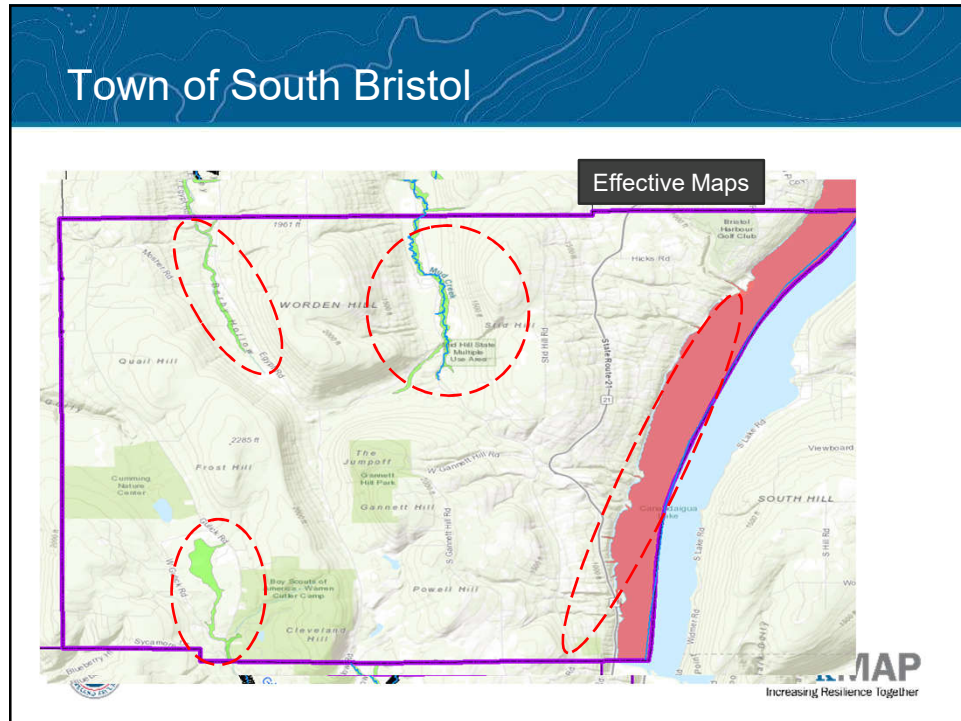
147



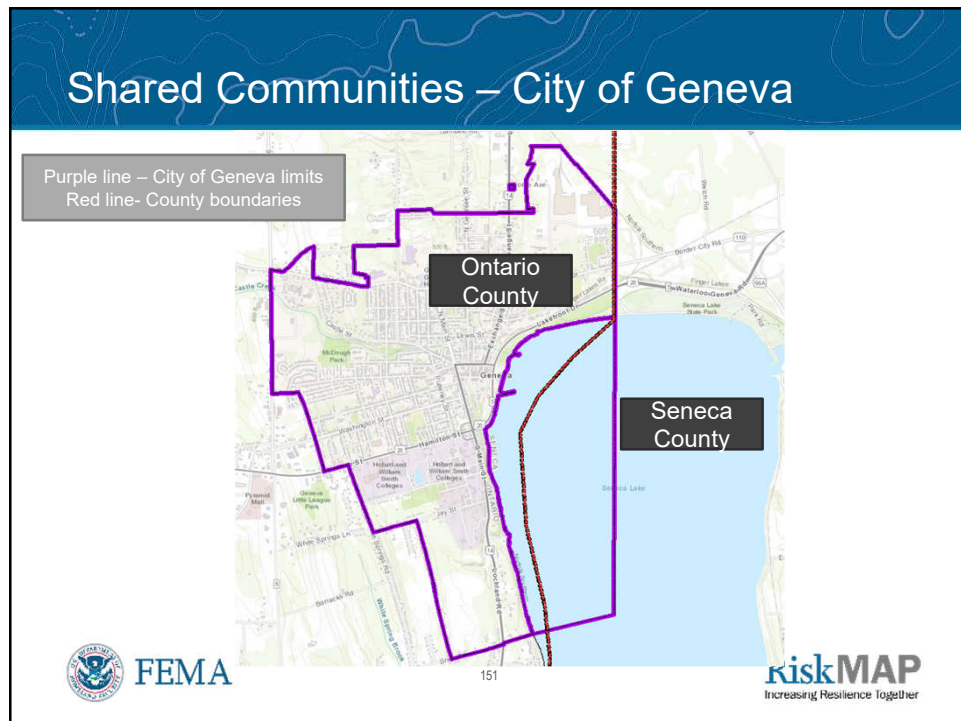
148



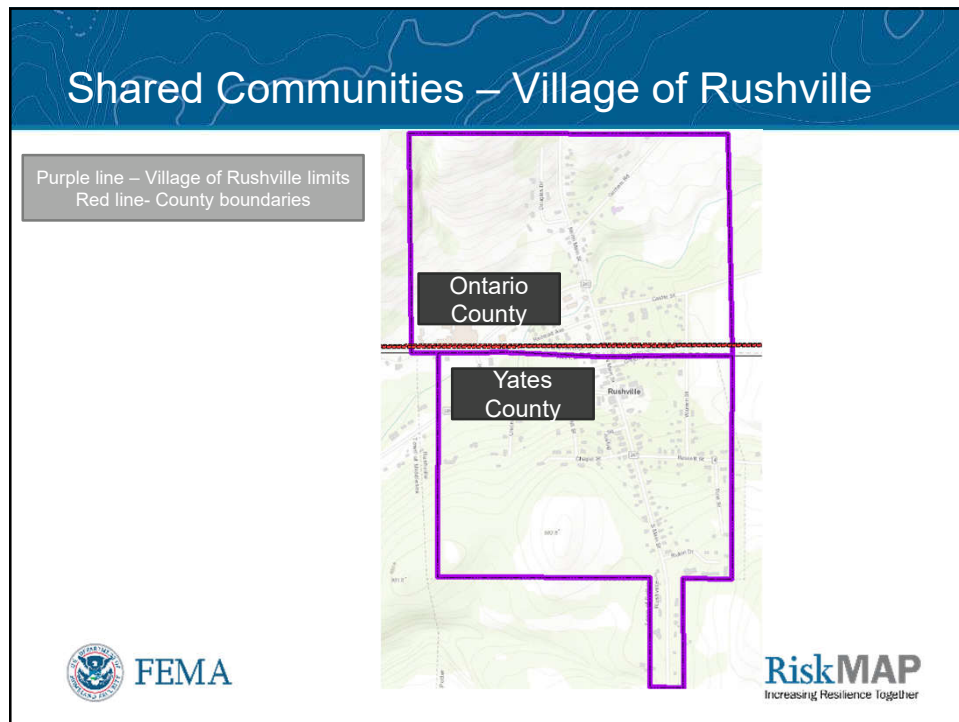
149



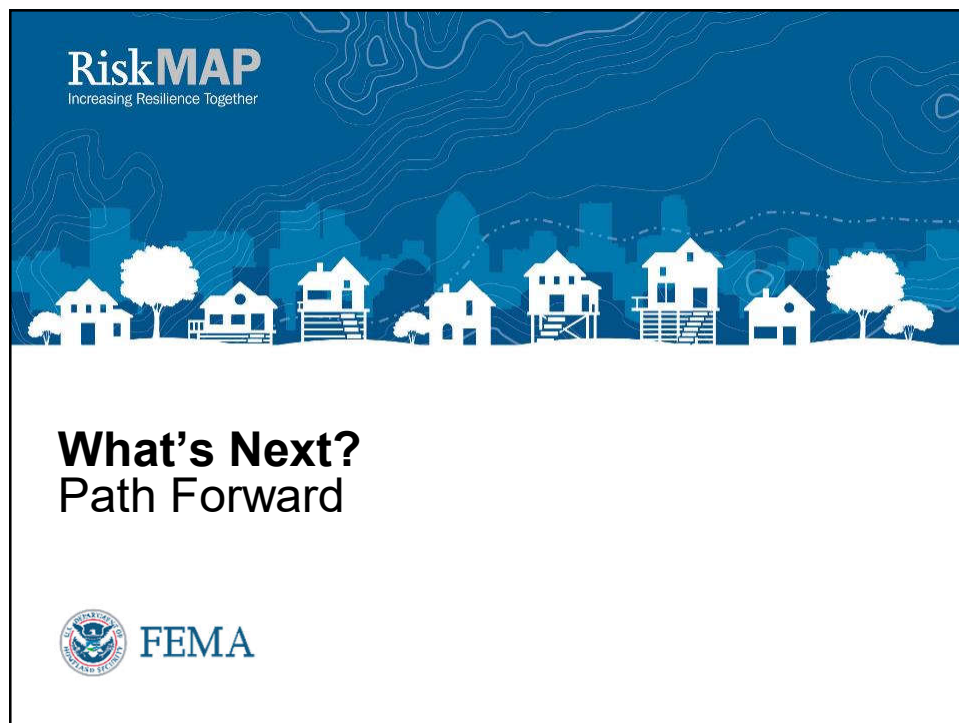
150



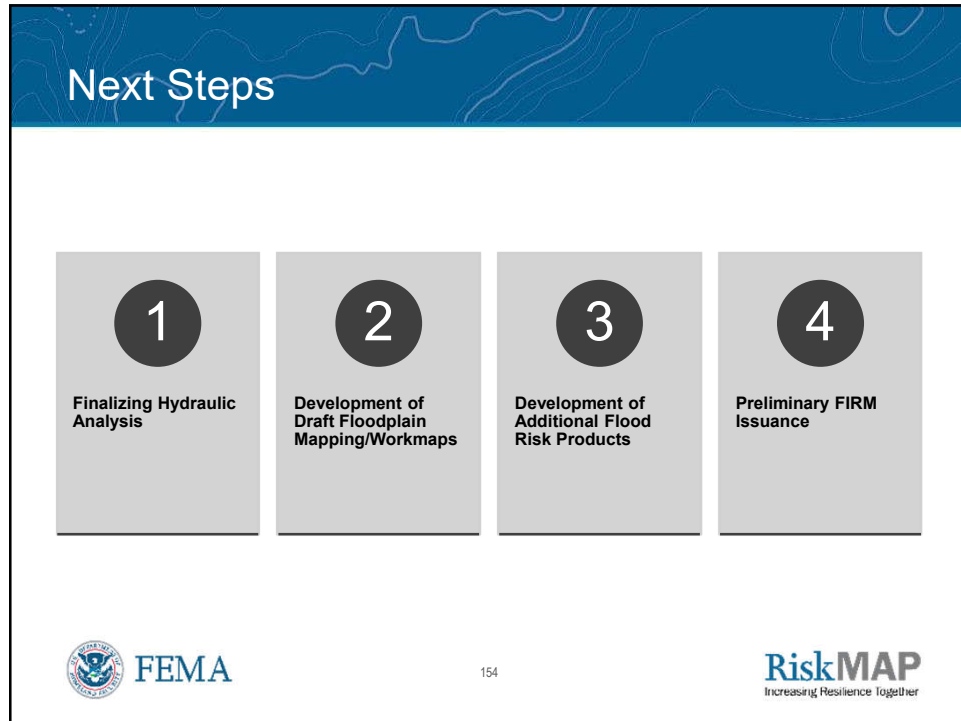
151



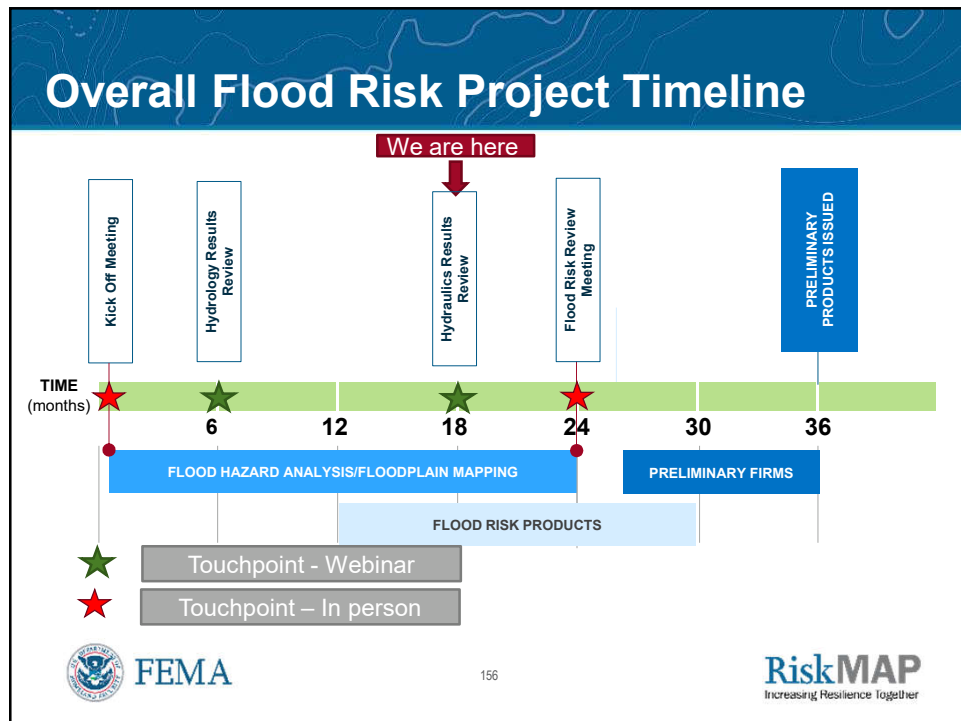
152



153



154



156

Contacts

FEMA

► Project Monitor

- Shudipto Rahman
- 202-702-4273
- Shudipto.Rahman@fema.dhs.gov

► Outreach Coordinator

- Stephanie Gootman
- 202-802-3137
- Stephanie.Gootman@fema.dhs.gov



FEMA

157

STARR II (Technical Partner)

► Project Manager

- Sarada Kalikivaya
- 972-588-3141
- Sarada.Kalikivaya@AtkinsGlobal.com

► Regional Support Center Lead

- Curtis Smith
- 646-490-3929
- Curtis.Smith@stantec.com

RiskMAP
Increasing Resilience Together

157

Questions? Comments?



Thank you!



FEMA

158