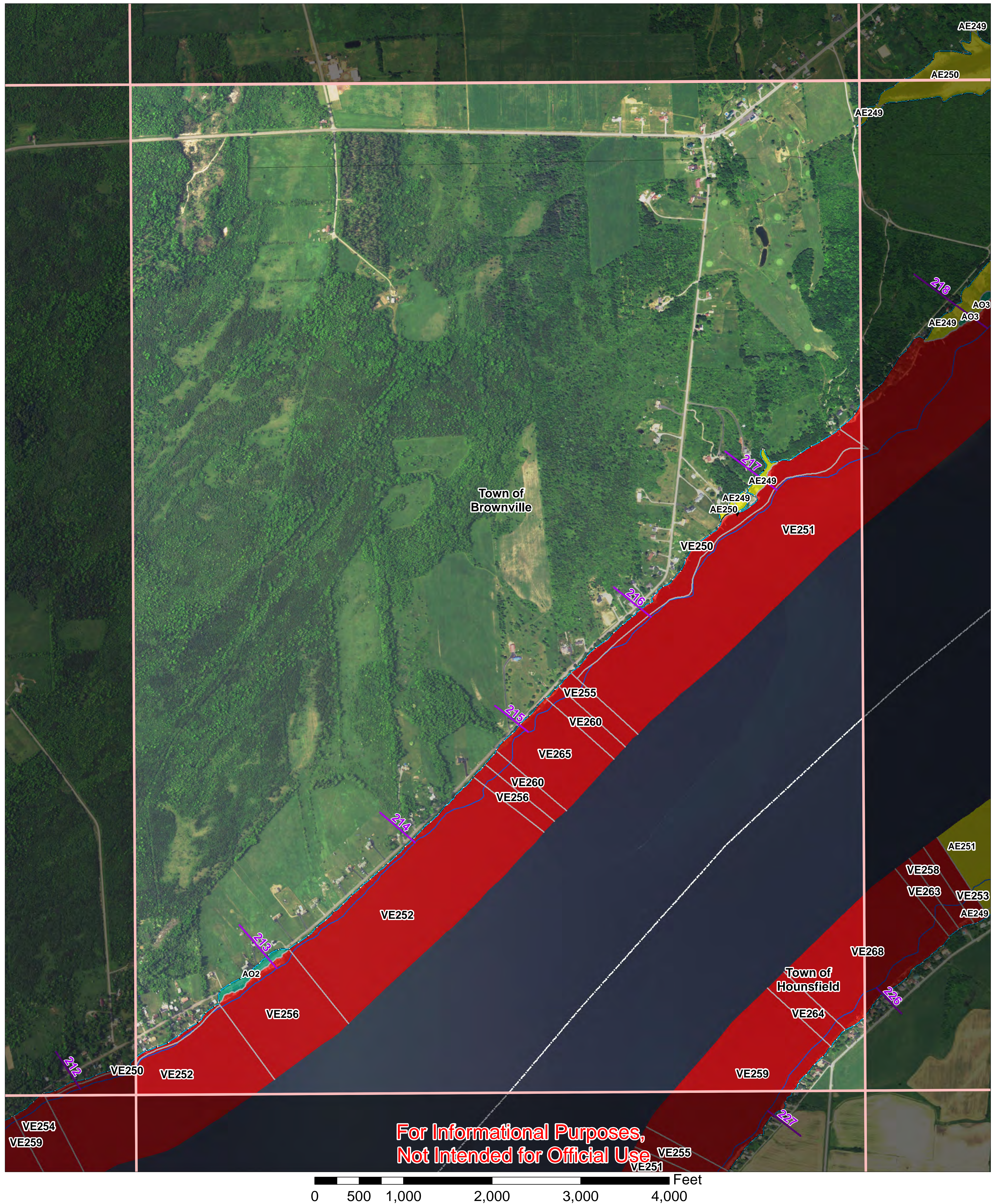


Jefferson County, NY Preliminary Work Map



**For Informational Purposes,
Not Intended for Official Use**

Flood Hazard Information

- 2024 Hazard Information**
- 0.2% Annual Chance Boundary
 - 1% Annual Chance Boundary
 - Gutter Line
 - LiMWA
 - AE
 - VE
 - AO
 - Shaded X (0.2% Floodplain)
 - Coastal Transects
 - Shoreline*
 - Political Boundary

Elevation information is provided in feet NAVD88.

* Shoreline represents Mean Low Lake Level, is the baseline for the overland model and may not match shoreline in imagery

Panel 0701

This preliminary work map contains coastal flood hazard information only, riverine flood hazard information not included



FEMA



 A JV of Dewberry, URS and ESP
RAMP
Risk Assessment, Mapping, and Planning Partners

