

Essex County, NJ Levee Flood Hazard Identification

Township of South Orange Village

Local Levee Partnership Team (LLPT) Touchpoint
December 14, 2020



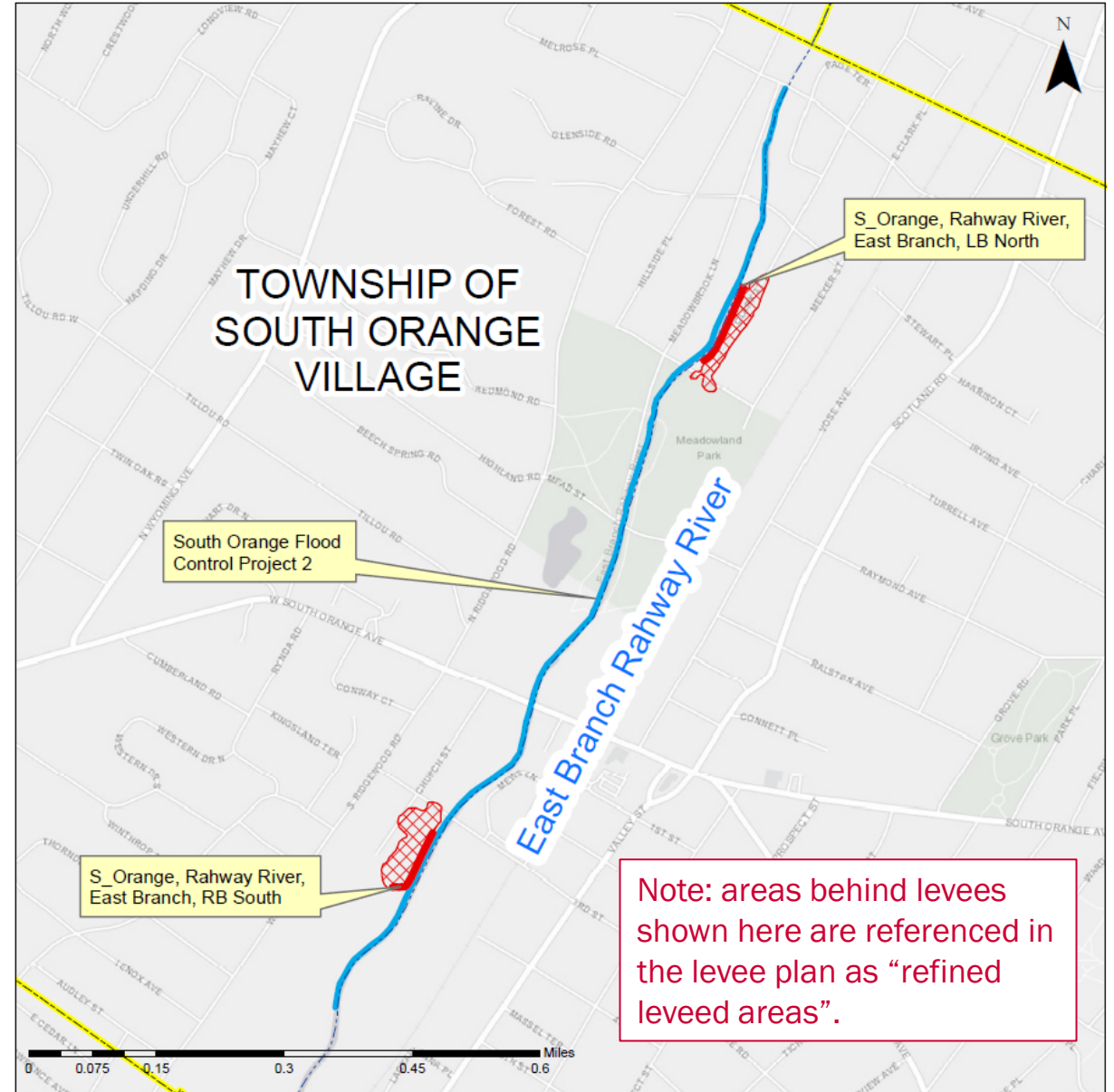
FEMA

Agenda

1. Recap of LLPT1 meeting
2. Outstanding Questions
3. Review Levee Approach Options
4. Path Forward & Next Steps

Recap of LLPT1 Meeting

- 2 levee systems; 1 channel system
- Built in 1976 by USACE
- Effective FIRM Panels do not show floodplain or levee impacted area
- Levee impacted areas have now been estimated



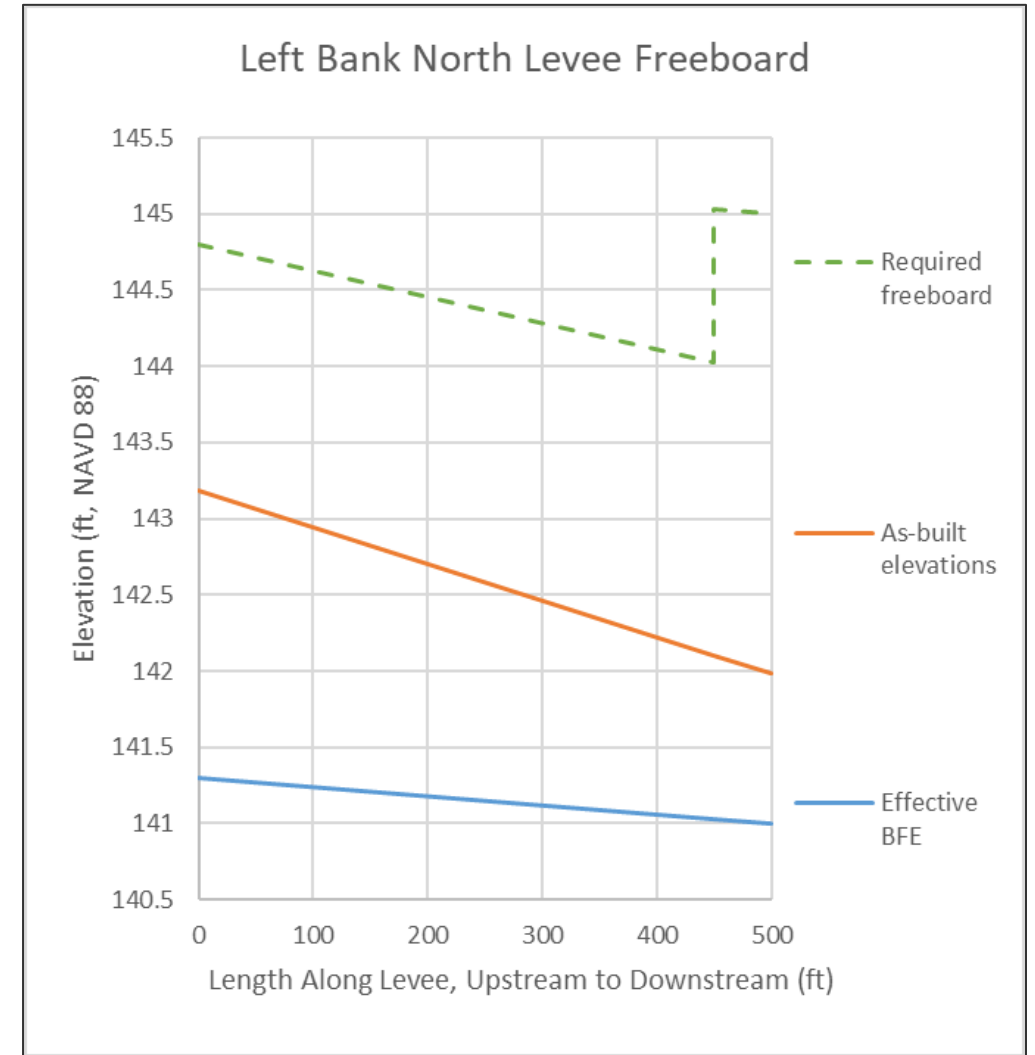
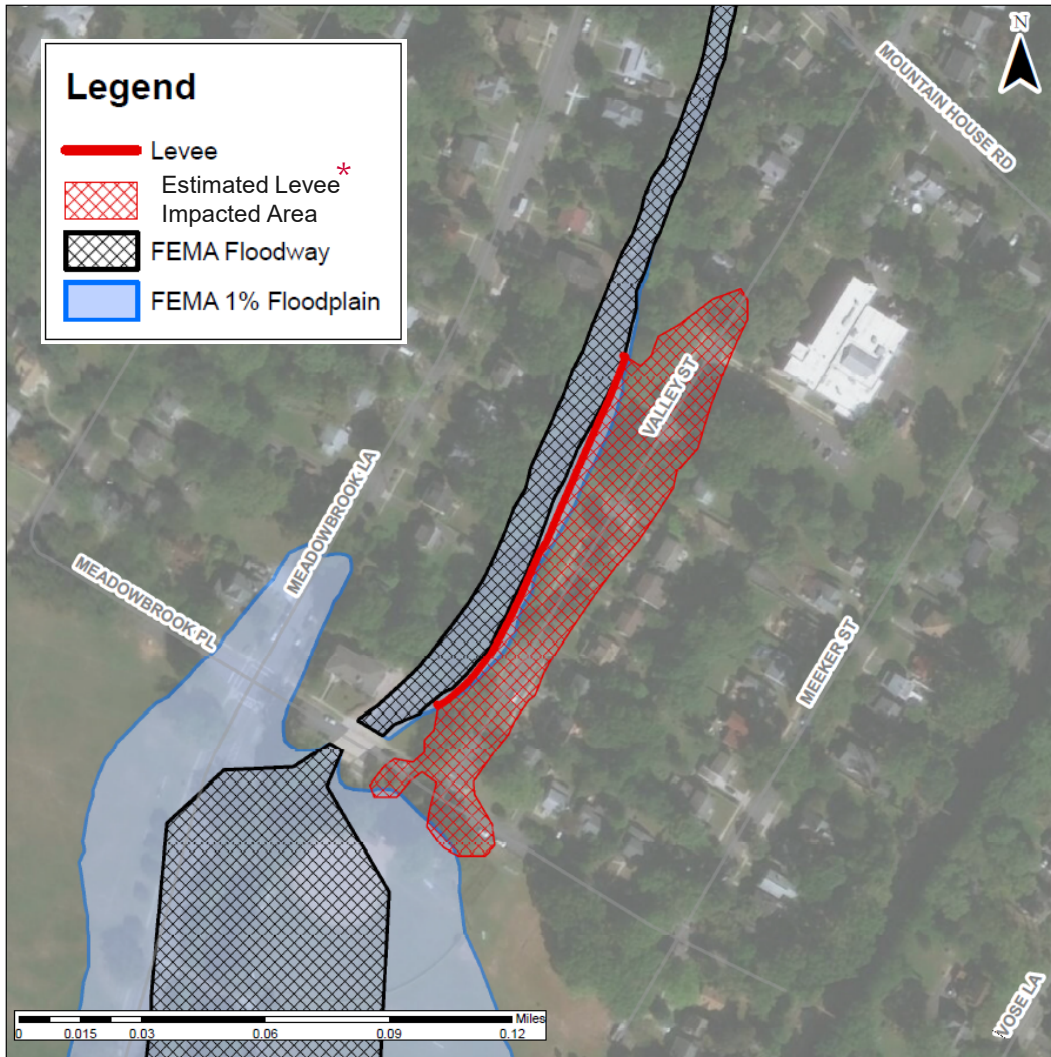
FEMA

Effective FIRMs (2007)



FEMA

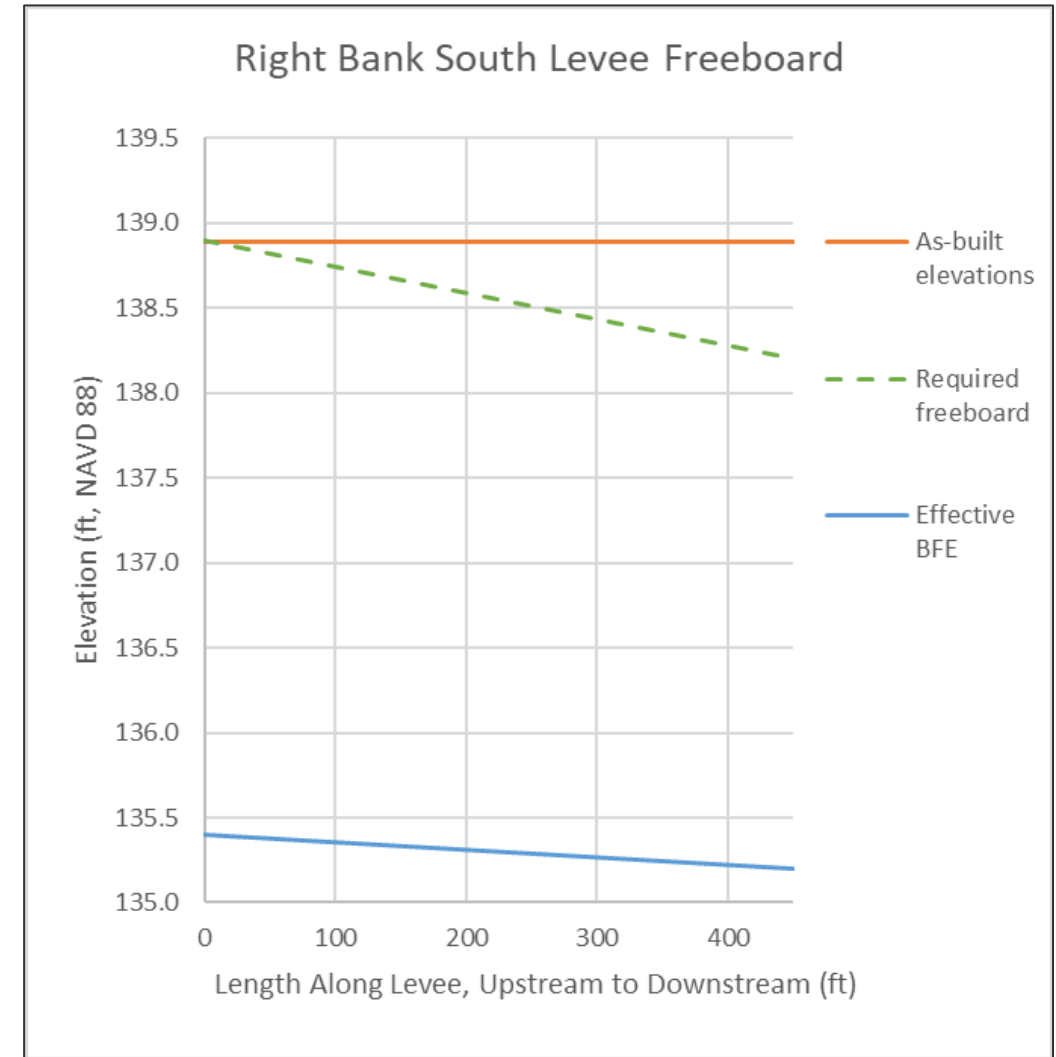
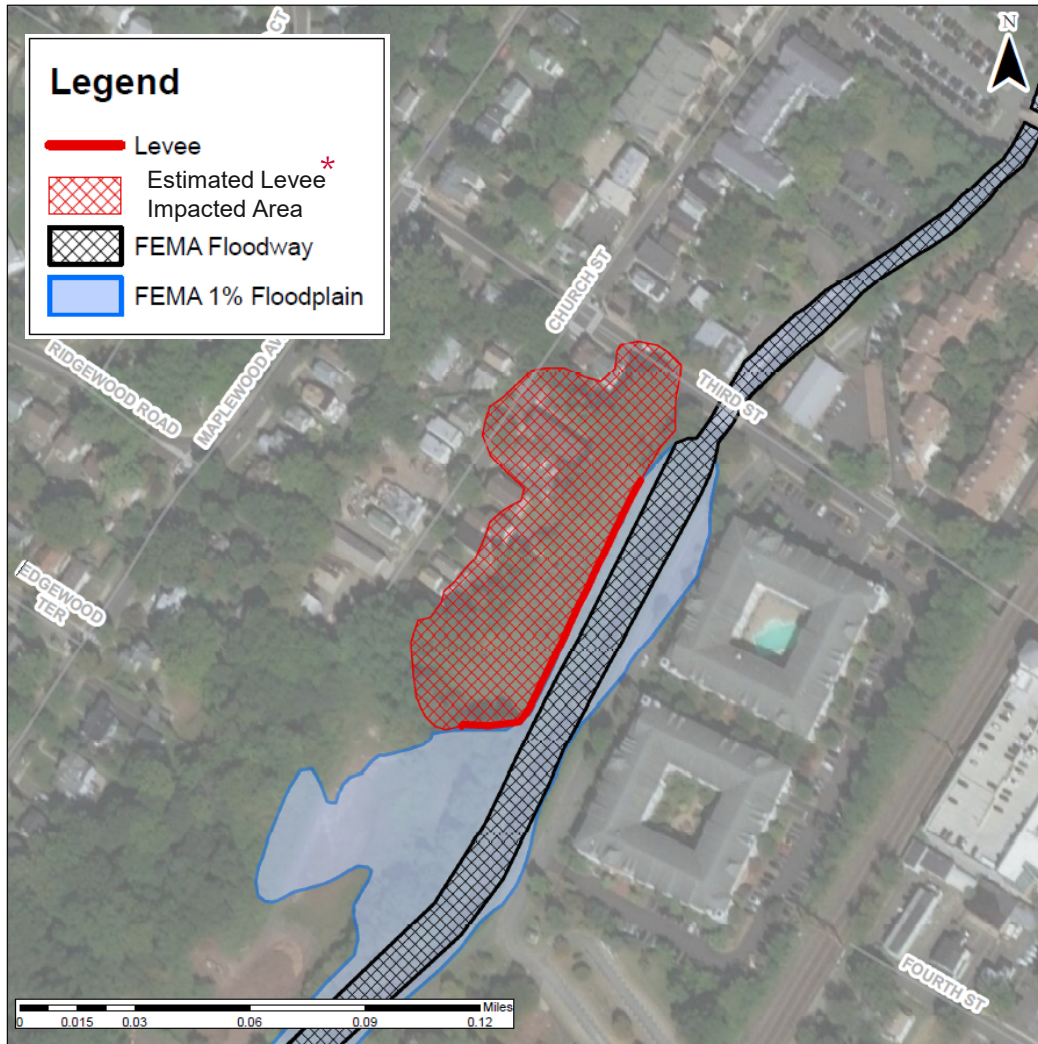
Left Bank North Levee



FEMA

*referenced in the levee plan as “refined leveed area”.

Right Bank South Levee



FEMA

*referenced in the levee plan as “refined leveed area”.

Questions from LLPT 1 Meeting



FEMA

Channel wall or retaining wall



North of Meadowbrook Pl



North of S Orange Ave



FEMA

Photos courtesy of USACE 2016 Inspection Reports

Floodwall



Upstream end of channel system, north of Montrose Ave



FEMA

Photos courtesy of USACE 2016 Inspection Reports

Levee



Left Bank North Levee, north of Meadowbrook Pl



Right Bank South Levee, south of 3rd St



FEMA

Photos courtesy of USACE 2016 Inspection Reports

Other Outstanding Questions?



FEMA

Mapping Path Forward is Based On Data

	Reach Procedures				
	Sound **	Freeboard Deficient **	Overtopping **	Structural-Based Inundation *	Natural Valley *
Elevation Information for the Levee Crest and Toe	✓	✓	✓	✓	
BFE + Freeboard Less than Levee Crest	✓				
BFE Less than Levee Crest	✓	✓			
Operations and Maintenance Plan	✓	✓	✓	Beneficial	
Structural Design Requirements	✓	✓	✓		
Inspection Reports	✓	✓	✓	Beneficial	
Evaluation of Overtopping Erosion Potential			✓		

✓ - Required

* - No cost to community

** - Potential additional cost to community



FEMA

Likely most applicable procedures for these levees based on available data

Next Steps

- Additional time for more data collection
- FEMA to review any additional data collected
- LLPT to reconnect in early 2021
- FEMA to develop and share Draft Levee Plan document with LLPT for review



FEMA