

Essex County, NJ Levee Flood Hazard Identification

Township of South Orange Village

Local Levee Partnership Team (LLPT) Meeting

April 8, 2021



FEMA

Agenda

1. Introductions
2. Levee System Overviews
3. Levee Plan Summary & Review
4. Next Steps

Township of South Orange Village

Levee System Overviews



FEMA

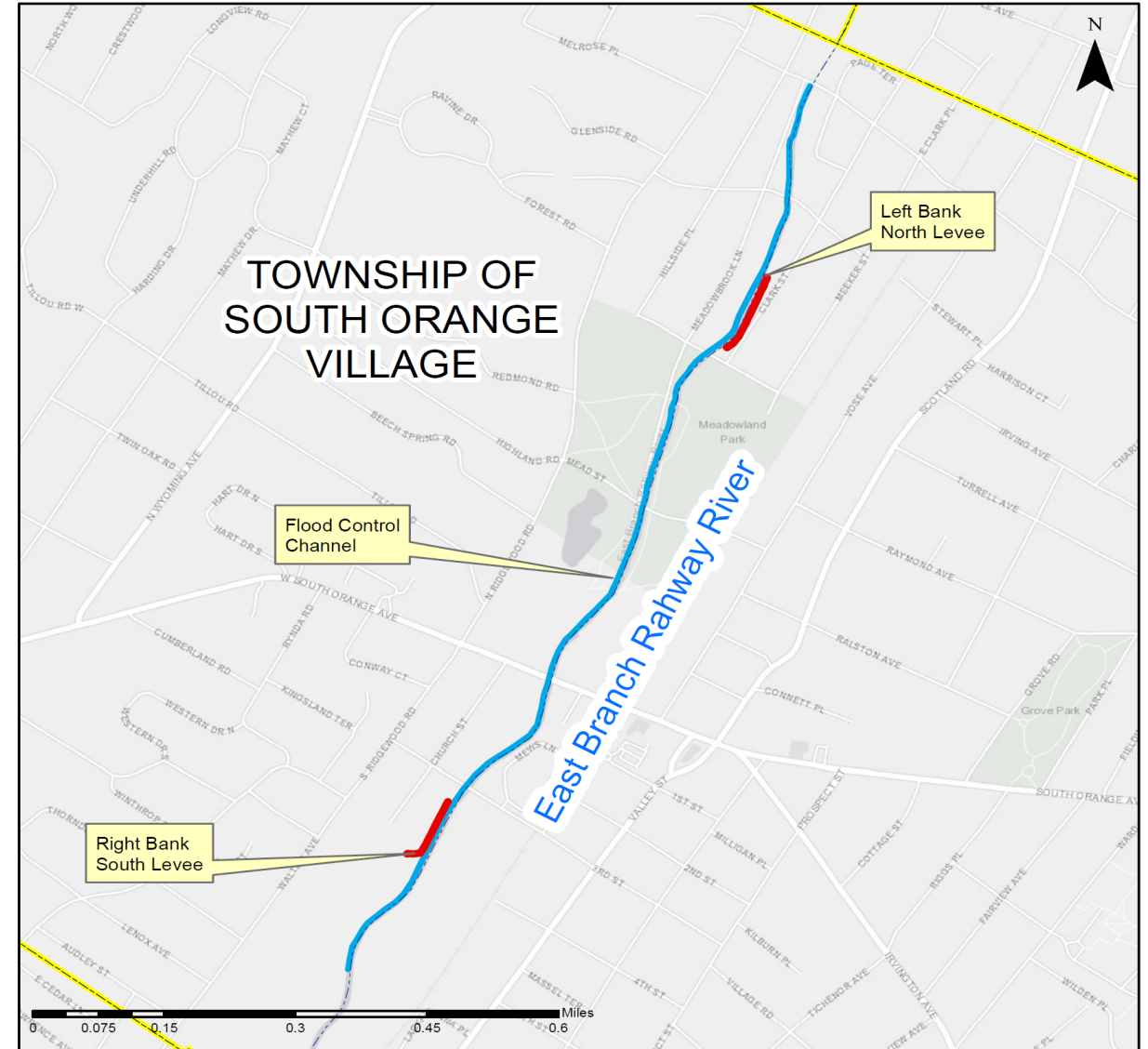
Levees of South Orange Village

2 levee systems

- Left Bank North Levee
- Right Bank South Levee

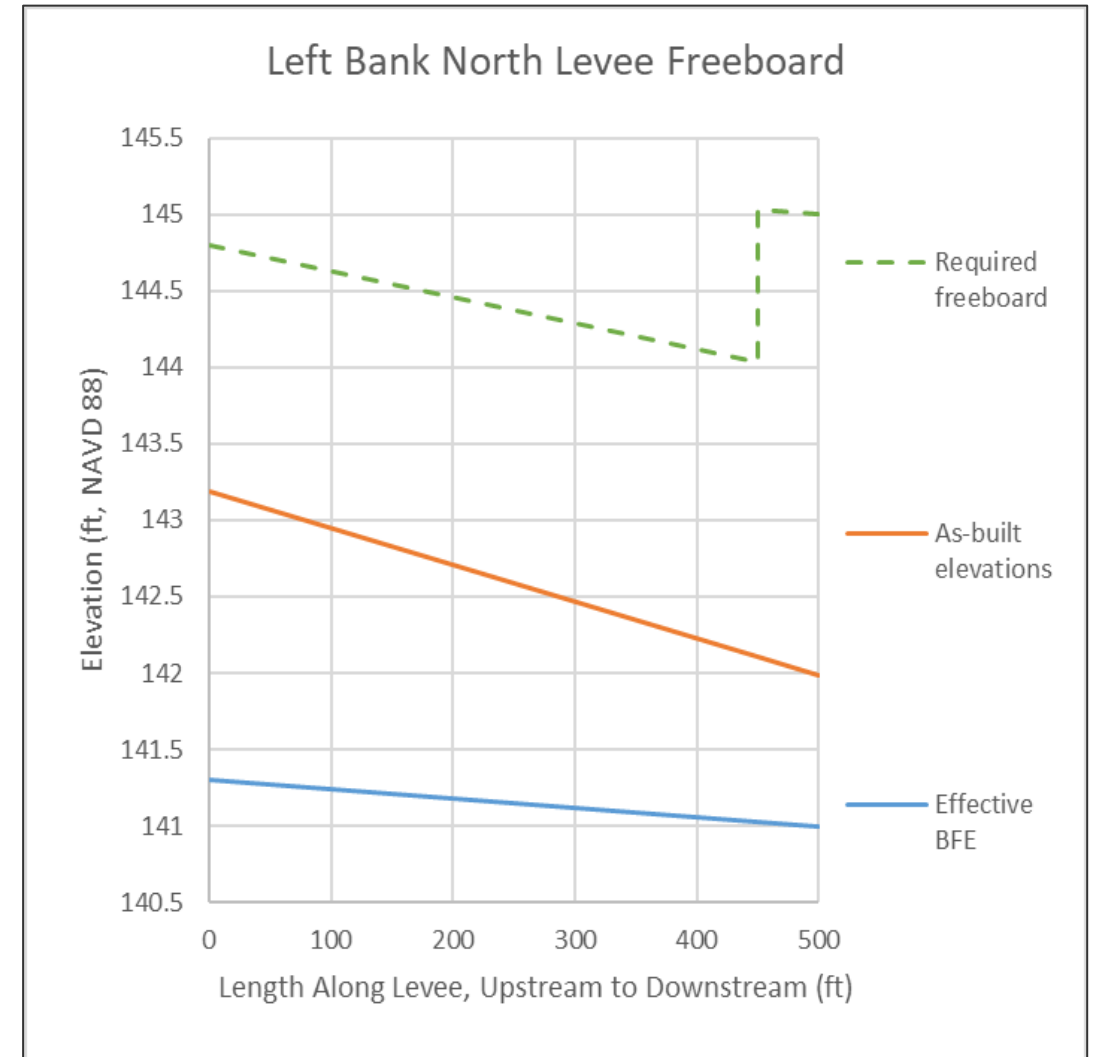
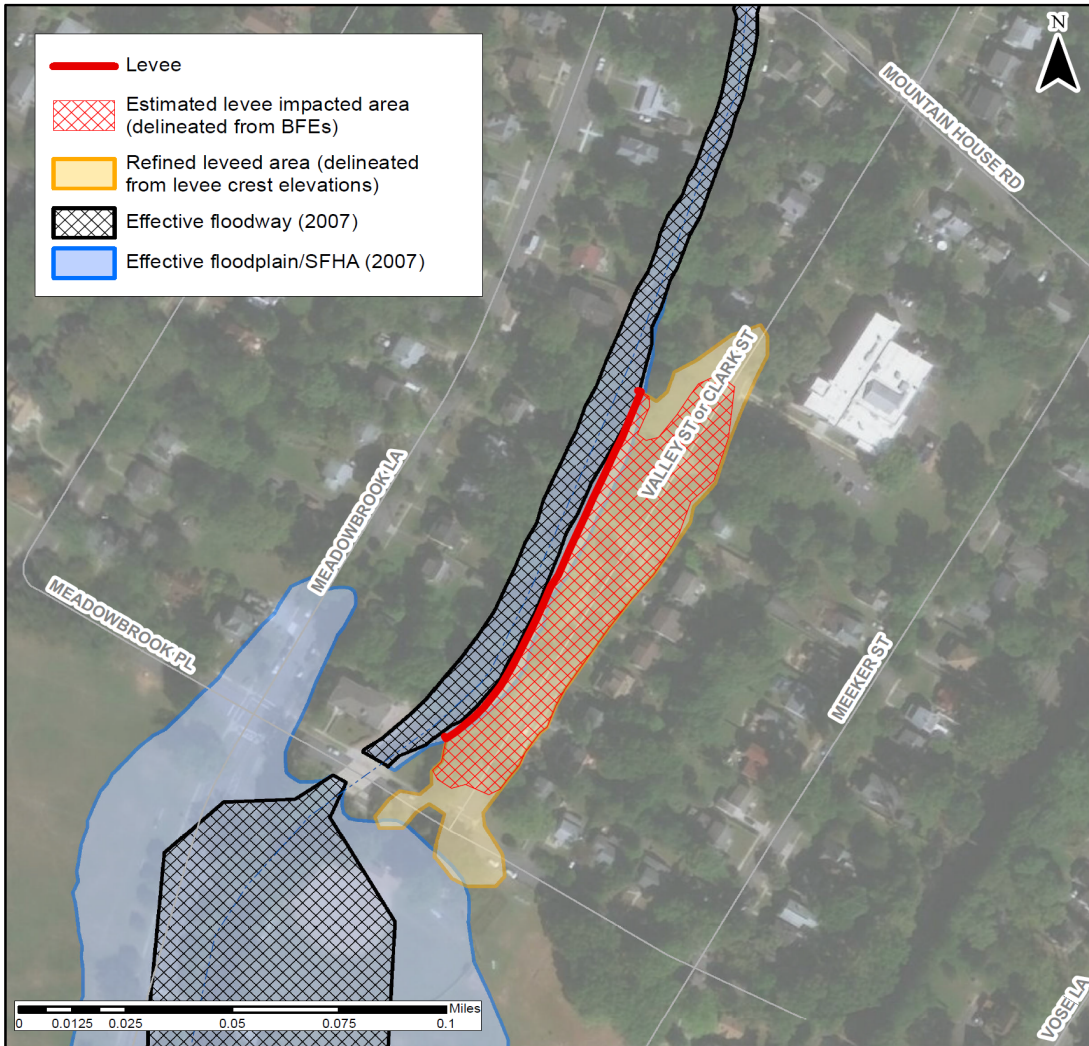
1 channel system

- Flood control channel



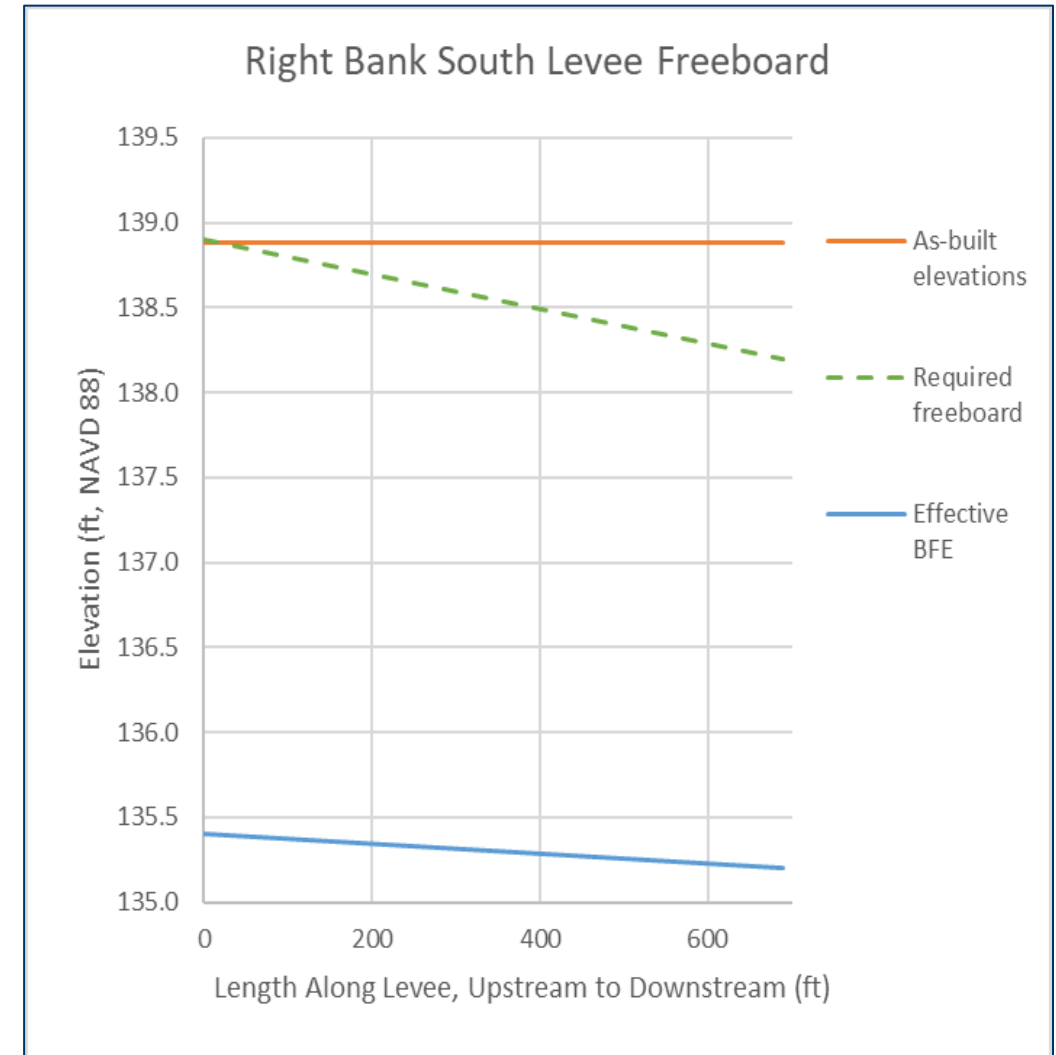
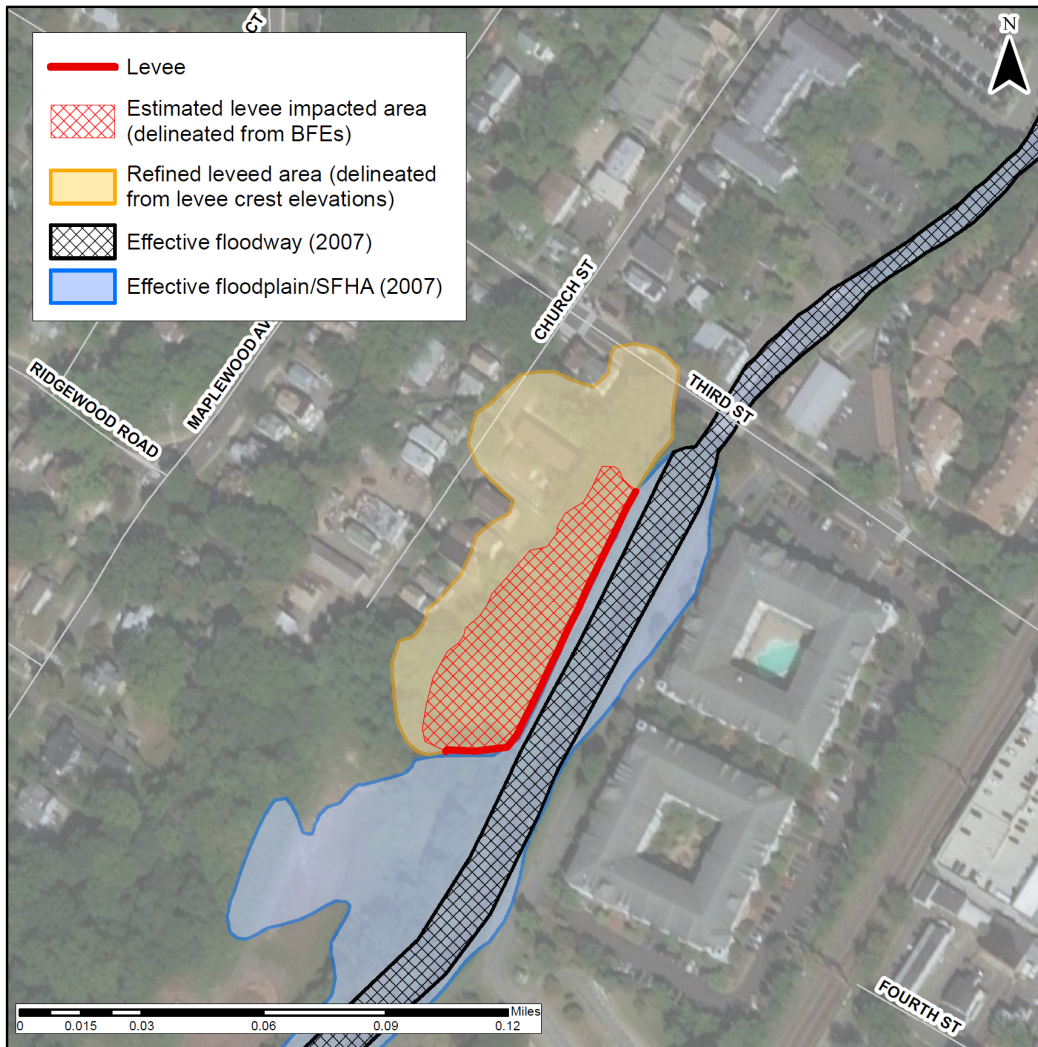
FEMA

Left Bank North Levee



FEMA

Right Bank South Levee



FEMA

Township of South Orange Village

Levee Plan Summary & Review



FEMA

Levee Plan

Contents

1. Introduction
2. Levee System Descriptions
3. Stakeholder Engagement and Data Collection
4. Initial Data Analysis
5. Potential Mapping and Analysis Procedures
6. Path Forward and Next Steps



Levee Plan

South Orange Flood Risk Management Project

*Township of South Orange Village,
Essex County, New Jersey*

Draft March 2021



FEMA



RiskMAP
Increasing Resilience Together

Township of South Orange Village

Next Steps



FEMA

QUESTIONS?



FEMA

Contacts

	Title	Employee	Phone Number
FEMA	Risk Analysis Branch	Shudipto Rahman, Project Monitor shudipto.rahman@fema.dhs.gov	(212) 680-8825
		Thomas Song thomas.song@fema.dhs.gov	(917) 374-5475
Production and Tech. Services	Project Engineers, Floodplain Analysis and Mapping – STARR II	Stephanie Nurre stephanie.nurre@stantec.com	(312) 262-2284
		Trevor Cone trevor.cone@stantec.com	(212) 330-6157
Outreach	Community Engagement and Risk Communication (CERC) – Resilience Action Partners	Koury Wilson koury.wilson@ogilvy.com	(804) 837-2514
		Jennifer Gutierrez jennifer.gutierrez@mbakerintl.com	(646) 682-5520



FEMA



FEMA

Thank You

Challenges, Innovation, The way forward